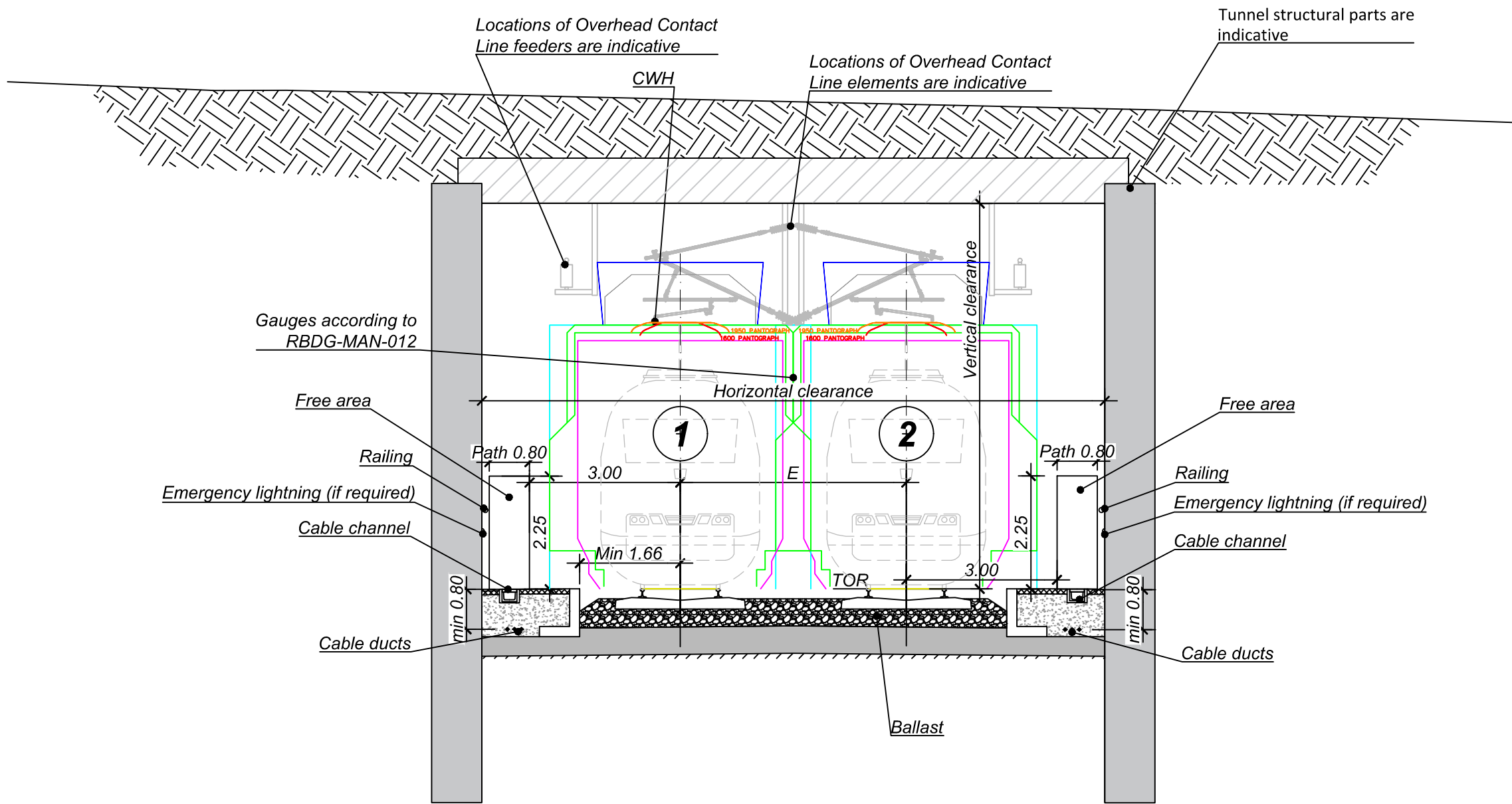


TUNNEL OR CUT AND COVER - CROSS SECTION



NOTES:

1. Dimensions and cross section is shown on straight section, in curves values may change. Tunnel dimensions should be the same through whole tunnel length.
2. Horizontal clearance must include allowance for fixed equipment - Such as handrail close to escape walkway.
3. Nominal Contact Wire Height (CWH) is 5.30m. All other dimensions should be according to RBDG-MAN-019.
4. Given cross-section and secondary elements are only indicative, TSI requirements must be followed.
5. Side platforms should be at the same level as Top Of Rail (TOR)

Speed	E	Minimum vertical clearance
249 km/h	4.50 m.	7.02 m.

- Structure gauge
- SEc gauge
- GC and GI3 Uniform gauge
- Pantograph envelope



RAIL BALTICA

Preliminary design for the Rail Baltic 1,435 mm gauge line

A8	01/04/2025	Platforms height reduction, added catenary	MZO			SCALE	1 / 100	DRAWING DESCRIPTION	TUNNEL OR CUT AND COVER CROSS SECTION
A7	23/11/2020	Cable ducts added, horizontal clearance corrected	LIV	ALO	AMI				
A6	20/11/2019	Minor modification	KMI (RB)	VAM (RB)	VAM (RB)	SHEET	01	FILE	RBDG-DWG - 0 7 3 A 8
A5	27/03/2018	Corrections followings comments	DAN	CCA	EFA				
-----	DATE	REVISION DESCRIPTION	DRAWN	CHECKED	APPROVED				