

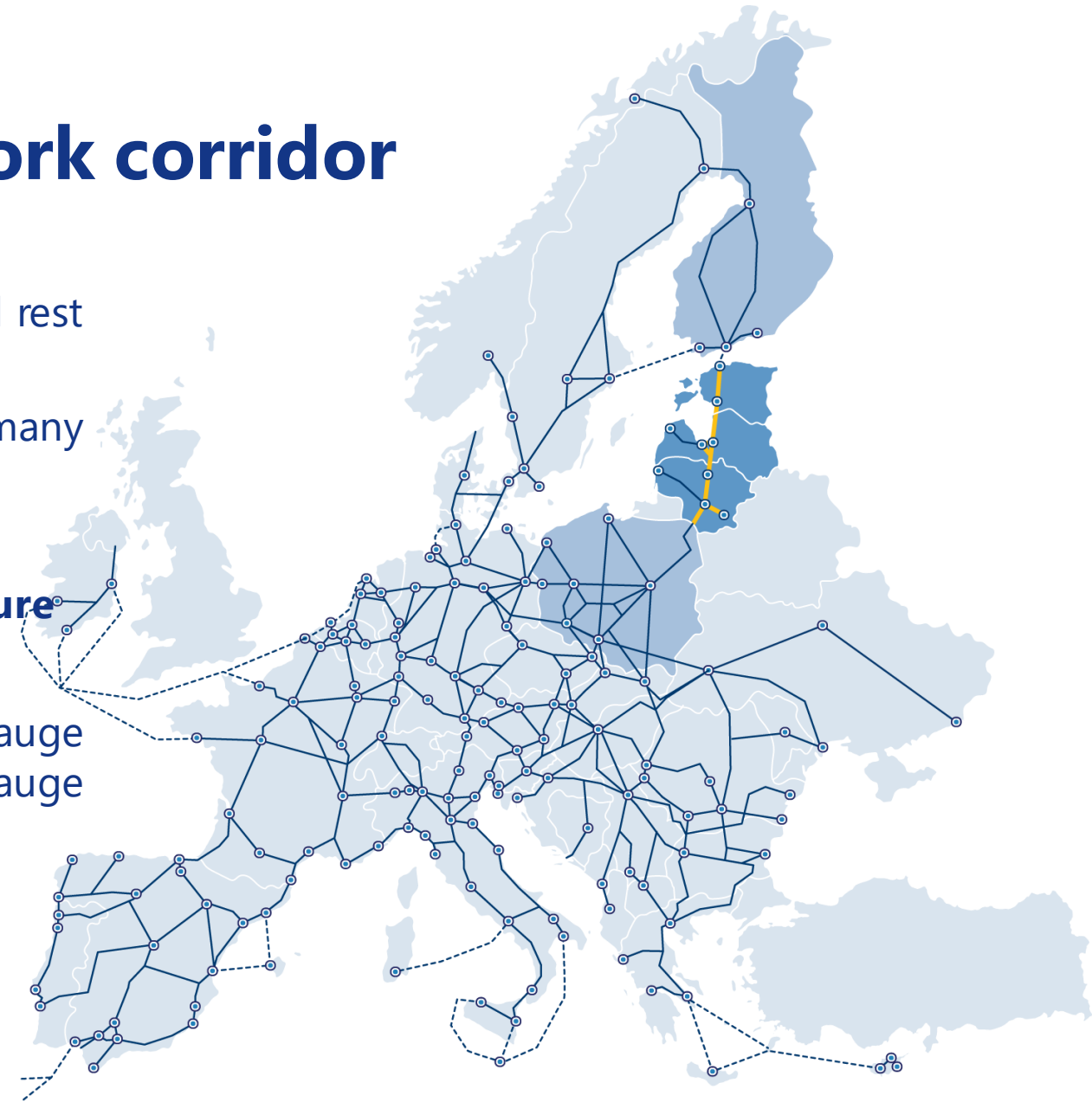
RAIL BALTICA PROJECT IN ESTONIA


Kaur Laansalu
Head of Technical Expertise Unit
Rail Baltic Estonia



Rail Baltica – part of the North Sea - Baltic core network corridor

- Restoring the **missing link** between the Baltics and rest of Europe
- Connection to European **TEN-T** networks with many ports & terminals all over the Europe
- New **economic** and **security** corridor
- Reunite Baltic states in a **single railway infrastructure**
- Cooperation with Poland and Finland
- Crossroads for the Eurasian and European gauge railways between the existing 1520mm broad-gauge and the standard 1435mm track gauge



- 
- EU gauge (1435 mm)
 - Double-track
 - Fully electrified & interoperable
 - Length: 870 km
 - A 10-year construction period
 - More than €6 bn investment in the region
 - Implemented by Estonia, Latvia and Lithuania
 - Financed by: Connecting Europe Facility and the Baltic states
 - Provides intermodality/multimodality

MAJOR RAIL BALTICA CONSTRUCTION SITES IN ESTONIA

The Rail Baltica portfolio in Estonia consists of several major projects:

213 km double-track main line

2 international passenger terminals – Tallinn and Pärnu

2 multimodal freight terminals – Tallinn (Muuga) and Pärnu

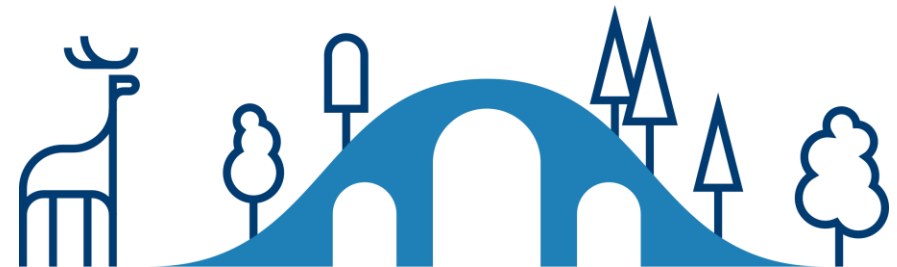
12 regional stops

1 rolling stock depot - Tallinn

2 infrastructure maintenance depots

30+ ecodeucts

86 bridges and viaducts



PROJECT PORTFOLIO & CONSTRUCTION PROCUREMENTS



OVERPASSES and TRAFFIC JUNCTIONS

- On average, about **30 new bridges and viaducts** will be added to each county with the construction of the railway.
- According to environmental requirements, ca **33 ecoducts** will be built in forest areas for animal passages.
- A group of overpasses has been agreed to be built in first priority, i.e. in the fast time window.

Current state of the project

- **8 facilities completed**
- **9 facilities in construction**
- **2 facilities in preparation for construction**
- **10 facilities in procurement**
- **3 main line sections that involve construction of road overpasses/traffic junctions - in procurement**



RAIL BALTICA MAIN LINE IN ESTONIA

The total length of the Estonian part of Rail Baltica is 213 km, which is divided into 3 delivery sections:

- section I: Tallinn-Pärnu
- section II: Pärnu-Estonian/Latvian border
- section III: Soodevahe-Muuga

Current state of the project

The construction designs ongoing for all of the forenamed sections.

In parallel also construction procurements have already begun in sections where sufficient majority has been achieved.

Three main line construction procurements have already announced and opening of bids is foreseen within this year.

Works to be carried out: Construction of the 1,435 mm track gauge railway infrastructure, facilities (road viaducts, railway viaducts, ecoducts), road building, construction of crossings.

ENE and CCS will be constructed separately.



MAIN LINE FIRST TENDERS

Main Line Railway Substructure:

Ongoing

- ✓ Ülemiste-Soodevahe (4,8 km) > 25 M EUR
 - Deadline for Submission of tenders: 02.10.23 12:00
- ✓ Harju-Rapla county line – Loone (9,4 km) > 71 M EUR
 - Deadline for Submission of tenders: 12.10.23
- ✓ Loone – Hagudi (7,2 km) > 53 M EUR
 - Deadline for Submission of tenders: 09.10.23

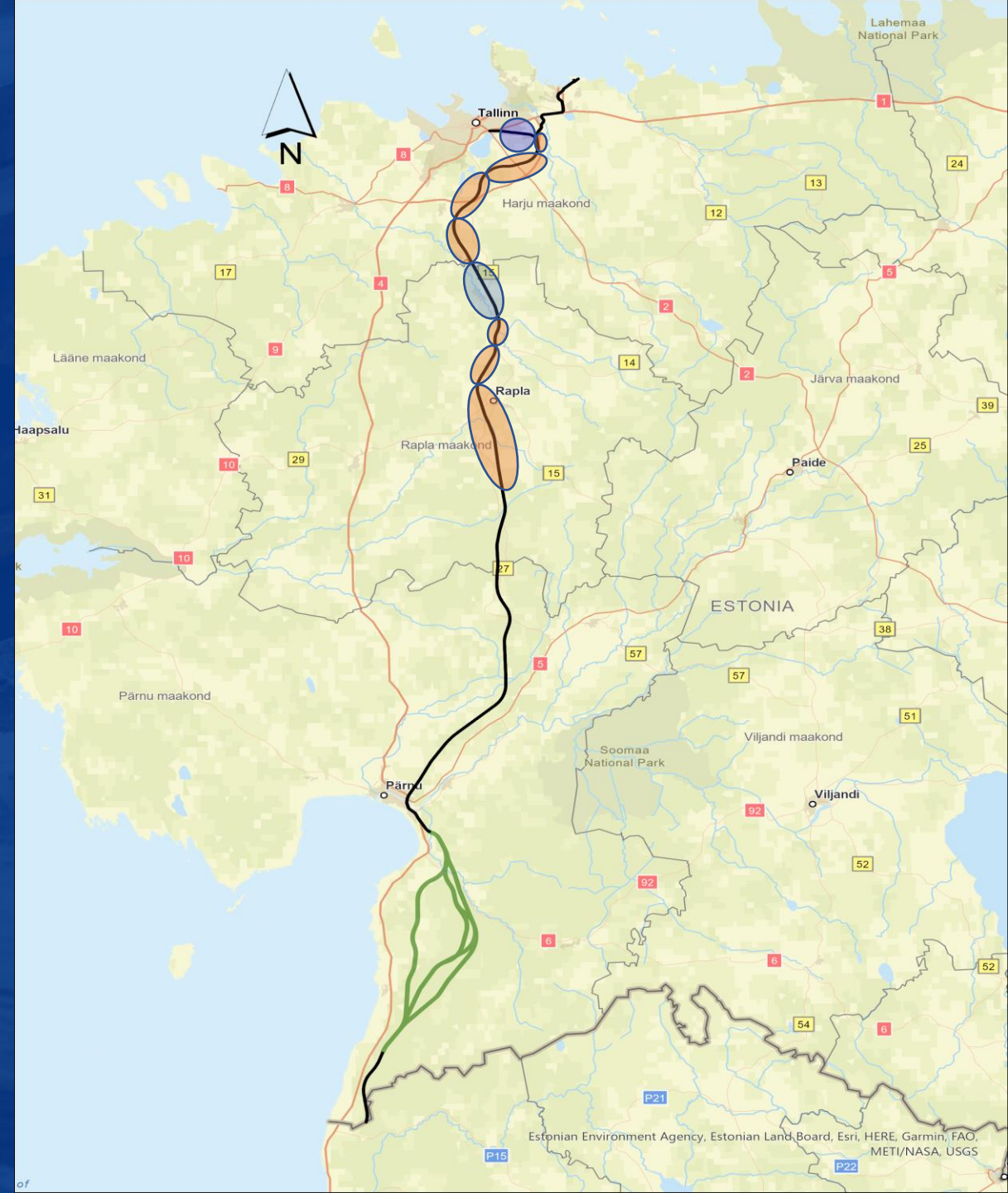
Ahead in 2023 and 2024

- ✓ Soodevahe station section (3,8 km)
- ✓ Soodevahe – Kangru (7,2 km)
- ✓ Hagudi – Alu (6,9 km)

+ another 4 sections with length of 7-15 km, post 2024 sections of 15 - 45 km

Superstructure

- ✓ 2024 + separated into 2-3 sections



ÜLEMISTE JOINT TERMINAL

- Located in Tallinn, near the airport
- Transport hub and new landmark that integrates 1520 and 1435 railway passenger functions as well as bus station functions
- Designed by Zaha Hadid Architects in cooperation with Esplan OÜ

Current state of the project

Master designs completed, utilities and surrounding area design to be modified

Commenced phases of construction:

Phase 1 – mainly related to relocation works of 1520mm gauge railway infrastructure – **contract signed** – 27 MEUR

Phase 2 – terminal building underground works “0 floor” and structures (concrete works) – **contract signed** – 44,8 MEUR

The whole construction is scheduled to be completed in the autumn of 2028

Works to be carried out:

General construction, construction of 1,435 mm and 1,520 mm track gauge railway infrastructure, road construction, electrification works



ÜLEMISTE JOINT TERMINAL

Next phases – stages III and IV

Surrounding area & utilities

Construction of North-side streets of the Ülemiste joint-terminal and relocation of the tramway

- Procurement launched: December 2022
- Estimated value: **391,9 K EUR**

Terminal building (passenger facilities etc) with construction of South-side streets

- Procurement launch planned in: 2024
- Estimated value: > **80 M EUR**

PÄRNU PASSENGER TERMINAL

- Second international Rail Baltica passenger terminal in Estonia
- About four kilometers from the centre of Pärnu
- Close to several commercial establishments and business premises, as well as important traffic junctions of the town such as the Papiniidu bridge over the Pärnu River or the Via Baltica route
- The terminal has been designed by **PLUSS Architects**

Current state of the project

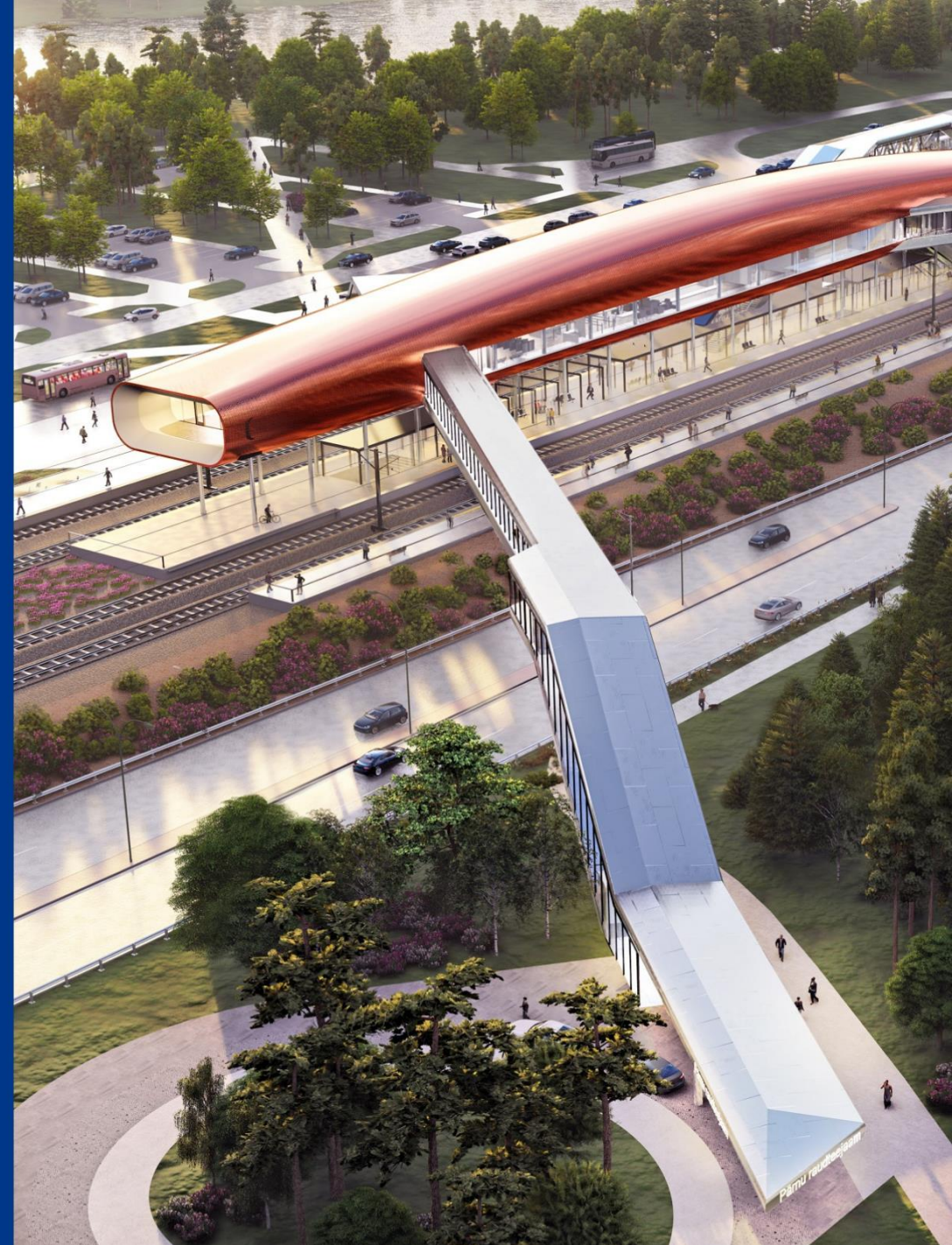
The master design has been completed.

I stage construction works of terminal access roads (**active**).

II stage construction works of terminal access roads (**procurement concept in preparation**).

Works to be carried out

Enabling works



PÄRNU PASSENGER TERMINAL

PROCUREMENT – II stage

- Terminal building and surrounding area
 - Launch: 2023 or 2024
 - 2027 construction works completed
 - Estimated value: > 45 M EUR



ÜLEMISTE ROLLING STOCK DEPOT

- Located near the Ülemiste passenger terminal in Tallinn. It will be the largest Rail Baltica rolling stock depot in the Baltics, where passenger trains will be maintained and repaired
- Within the framework of the project, an 8-track depot building with utility rooms, an administrative building and a rolling stock wash plant will be designed and built
- The depot can accommodate up to 7 trainsets at a time for various operations

Current state of the project

Master designs completed

Works to be carried out:

General construction, construction of 1435 mm tracks, electrification works



ÜLEMISTE ROLLING STOCK DEPOT

I stage construction procurement

- 2023

II stage construction procurement

- 2025

Works to be carried out: general construction, 1435 mm tracks, electrification works, depot building

Estimated cost: MEUR 80+



MUUGA FREIGHT TERMINAL

- Located in Muuga Harbor, it is the only Rail Baltica freight terminal directly connected to a harbor.
- Also the northernmost and largest freight terminal on Rail Baltica.
- A multimodal freight terminal where operators can accept or dispatch goods to both the 1,435 mm and the 1,520 mm gauge rail networks.

Current state of the project

The master design first phase completed. The beginning of the construction works is planned for 2026 and enabling works 2024.

Stage I of construction

Works to be carried out: general construction, construction of 1,520 mm gauge track railway infrastructure, road infrastructure and facilities.

Stage II of construction

Works to be carried out: Construction of the 1,435 mm track gauge railway infrastructure, rolling stock service depot and traffic control centre.



MUUGA FREIGHT TERMINAL

- PROCUREMENTS
 - **One or two construction phases**
 - Launch: 2025 +
 - Estimated value: > 100 M EUR



PÄRNU FREIGHT TERMINAL AND INFRASTRUCTURE MAINTENANCE CENTER

- The Pärnu freight terminal and infrastructure maintenance centre are planned to be built on the outskirts of Pärnu
- Freight terminal part allows the transshipment of goods between rail and road transport, storage and sorting of goods, assembly of rolling stock and other activities related to freight transport
- Infrastructure maintenance area allows for location of servicing machinery and equipment for maintenance in the Estonian section and maintenance of freight trains

Current state of the project

The preliminary design of the Pärnu freight terminal and infrastructure maintenance centre is being completed

Works to be carried out:

Excavation filling, excavation works, embankment construction, communications

PÄRNU FREIGHT TERMINAL & IMF

PROCUREMENT – 2 stages

- **Construction base for Main line construction material interim storage**
 - Launch: 2023
 - Estimated value: > 10 M EUR
- **Terminal & IMF**
 - Launch: dependant on investment decision on terminal, IMF latest in 2027
 - Estimated value: > 40 M EUR



LOCAL STOPS, REGIONAL STATIONS

12 regional stations

- 4 in Harju County
- 3 in Rapla County
- 5 in Pärnu County

The locations of all local stops have been selected in close cooperation with local governments.

Current state of the project

Preliminary design ongoing.

Works to be carried out

General construction, access roads, platforms, parking lots, landscaping, electrification works.

Procurement in 2 stages

- 2024 - regional stations (12) platforms in parallel with main line construction
- 2027 - regional stations (12) buildings and surroundings



LOCAL STOPS, REGIONAL STATIONS

- PROCUREMENT – 2 stages
 - 2024 - Local stations (12) platforms in parallel with main line construction
 - 2027+ - Local stations (12) buildings and surroundings up to 50 M EUR



PROCUREMENTS GENERAL INFORMATION



HOW TO PARTICIPATE



- How to take part in RB Estonia procurements:
 - All official procurement notices published in **Estonian procurement registry (eRHR)**, procurements over international threshold (5.382 M EUR) also in **TED**
<https://riigihanked.riik.ee/rhr-web/#/>
 - Informative announcements also on Rail Baltic Estonia and RB Rail AS websites
<https://www.rbestonia.ee/hanked/>
<https://www.railbaltica.org/tenders/#>
 - What to pay attention to:
 - Experience - risk with international participants: **Documents / Data** that needs to be submitted as part of the tender bid missing – disqualification.
 - **Questions** concerning the procurements should be asked through eRHR. Answers will be given in 3 days
-

ESTONIAN E-PROCUREMENT REGISTER

<https://riigihanked.riik.ee/rhr-web/#/>

GOOGLE: „erhr“

The screenshot shows the Estonian E-Procurement Register website. The top navigation bar includes the logo, 'PROCUREMENT REGISTER', 'Accessibility', 'Eesti keeles', a 'Login' button, and a search icon. Below the navigation bar, there are links for 'Home', 'Search', 'E-catalogue', 'Reports', 'Open data', and 'Help'. The 'Help' menu is open, displaying a list of options: 'Juhend hankijale', 'Juhend pakkujale', 'Juhend toetuse saajale, kes ei ole hankija', 'KKK uue registri kohta', 'Getting started. Quick guide to new tenderers.', 'Guide to tenderer', 'Video Guide to All Users', 'Video Guide to Tenderers', 'Videotutvustus hankijale', 'Videotutvustus kasutajale', 'Videotutvustus pakkujale', and 'С чего начать'. The main content area features a large 'Welcome to' heading, a search bar with the placeholder 'Enter the procurement number', and a green 'Search' button. The text 'Please use the search function to find procurements to find procurements. Please log in' is visible. Logos for the European Union and the Estonian Republic are also present.

MINIMUM SET OF REQUIREMENTS FOR SUPPLIERS

The Common Standards and Guidelines - railbaltica.org



Enrolment in a Commercial registry



Financial turnover & liquidity



Possession of expertise & experience



ISO 9001:2015 or equivalent



ISO 14001:2015 or equivalent

NB! If the Tenderer is a consortium, each member of the consortium shall comply with ISO or similar standard requirements

MINIMUM QUALIFICATION REQUIREMENTS

Main Areas	Key Requirements to Note
Legal Standing	Registration in it's country's Commercial Register
Professional Activity	(If Applicable) Registration in it's country's Construction Register / Professional Register
Economic & Financial Standing	<p>3 year average turnover <u>minimum 100% of contract price</u></p> <p><u>Liquidity ratio 1 or more</u> (current assets divided by short-term Liabilities)</p> <p><u>Positive equity</u></p>
Technical & Professional Ability	<p><u>Main contractor experience (last 5-7 years) for at least the scale of 70% of the anticipated contract value/scope (completed and accepted)</u></p> <p>ADDITIONALLY</p> <p><u>Track Construction Manager</u></p> <p>or</p> <p><u>Civils Construction Manager</u></p> <p>with</p> <ul style="list-style-type: none"> • 7 years experience • managed a similar contract • applicable qualification
Quality Management	ISO 9001:2015 or equivalent
Environmental Management	ISO 14001:2015 or equivalent

Deviations based on (1) change in legislation; and/or (2) market conditions

THANK YOU!

Rail Baltic Estonia

info@rbe.ee

<https://www.rbestonia.ee/>