



## Rail Baltica progress in Latvia

**Kaspars Vingris**

Chairman Of The Board





Ministry of Economic Affairs  
and Communications of the  
Republic of Estonia

Ministry of Transport of the  
Republic of Latvia

Ministry of Transport and  
Communications of the  
Republic of Lithuania

**Beneficiaries – three ministries**

Rail Baltic  
Estonia

Eiropas Dzelzceļa  
līnijas

Lietuvos  
geležinkeliai

RB Rail shareholders

RB Rail  
(Branches in LT, EE)

Rail Baltica  
statyba

**Central project coordinator**

Estonia

Latvia

Lithuania

**National implementing bodies**

Rail Baltic  
Estonia

Eiropas Dzelzceļa  
līnijas

Lietuvos  
geležinkeliai

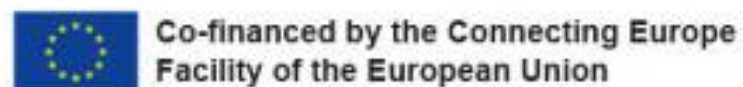
Rail Baltica  
statyba



# Rail Baltica main line and infrastructure objects in Latvia

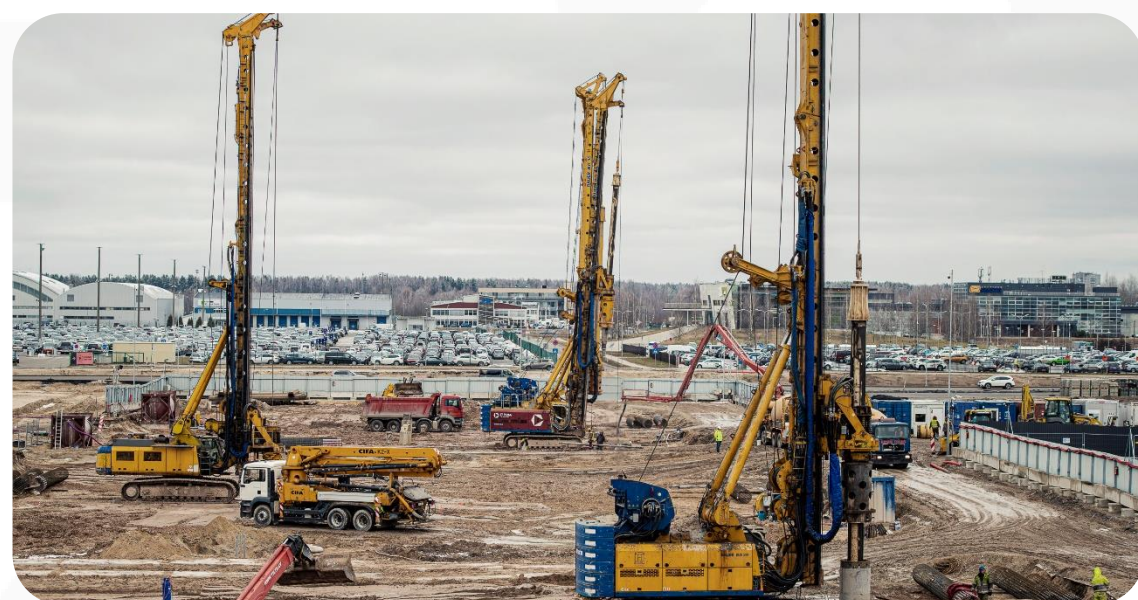
## Infrastructure objects:

-  Rail Baltica international stations
-  Rail Baltica regional stations
-  Infrastructure maintenance facilities
-  Rolling stock depot
-  Intermodal freight terminal



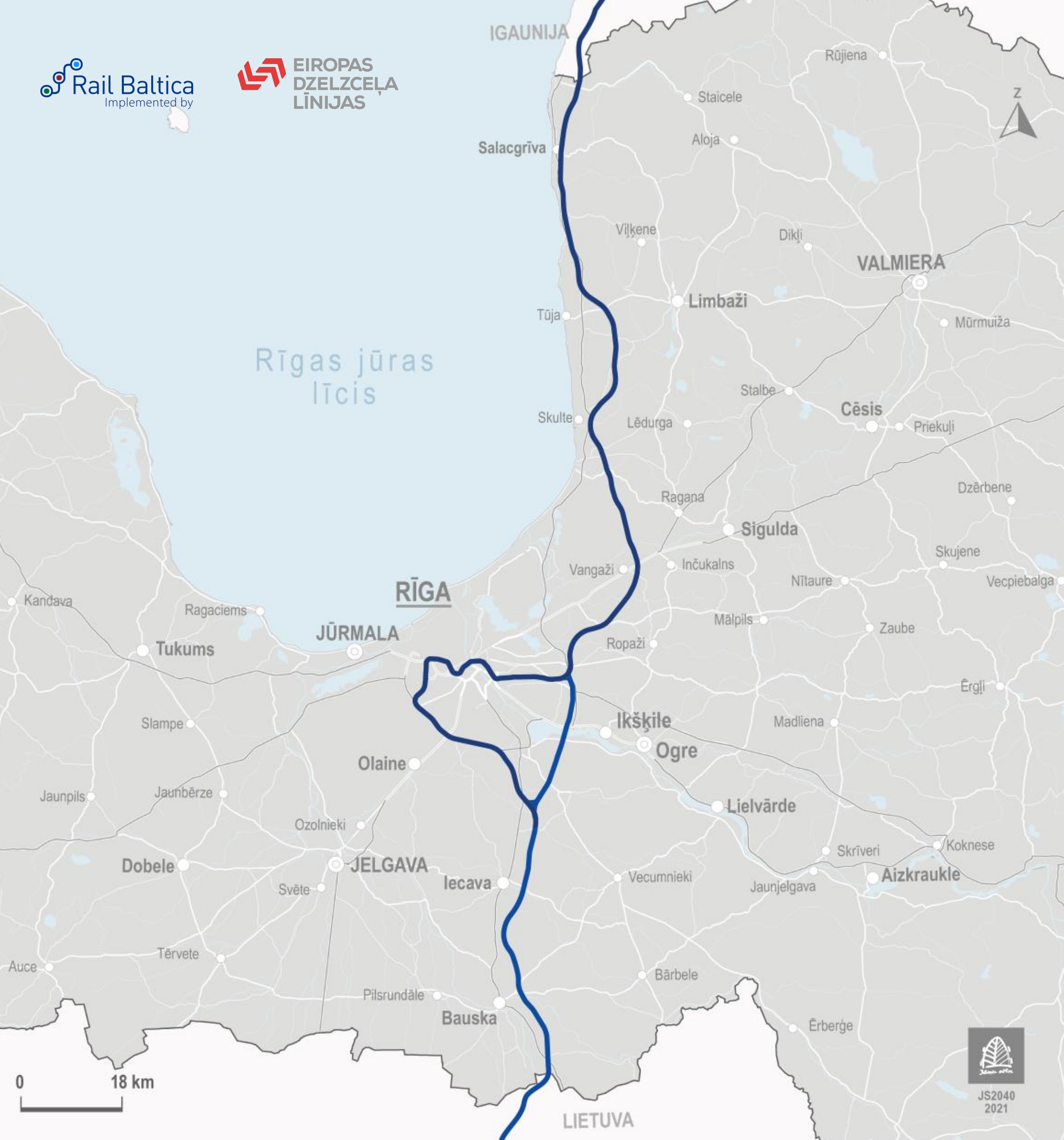


## Project implementation progress in Latvia 2023



- Construction works ongoing in **Rail Baltica Riga Central Station section and International Airport «Riga» section**
- Ongoing design for **intermodal freight terminal in Salaspils**
- Ongoing design for **regional stations**
- Design of **2 infrastructure maintenance facilities** in progress
- Large scale **mainline construction** procurement (approx. 220 km) in final stage
- Mainline construction supervision tender **completed**
- Development of the **railway infrastructure management model**





## Mainline construction

### Strategy

- Crossing of Riga city and borderline sections will be included in separate procurements

### Construction tender

- Approx 220km
- Publicly declared winner: E.R.B. Rail Baltica JV, which includes Eiffage Génie Civil SAS, Budimex S.A. and Rizzani de Eccher S.p.A (France, Poland, Italy)
- Contract to be signed autumn 2023

### Supervision tender

- Approx 220km
- Winner: Italferr (Ferrovie dello Stato Italiane Group)





# Upcoming activities

## Procurements

- 📍 Construction works of Riga city loop
- 📍 Design works of rolling stock depo in Jaunmārupe
- 📍 Designing of the Rail Baltica Multimodal cargo terminal at Riga Airport

## Project's Global Cost-Benefit Analysis

- 📍 Completion of new Rail Baltica Global Cost-Benefit Analysis by year 2024 providing updated parameters for the project's economic feasibility and beneficial nature



JS2040  
2021



# Ongoing **Rail Baltica** Latvia construction works





## Rail Baltica Central Station hub

- ⦿ Architecture - PLH Arkitekter & COWI (Denmark), 2017
- ⦿ Design and construction – BERERIX (BESIX (Belgium), RERE Būve (Latvia), Rizzani de Eccher (Italy), 2021
- ⦿ FIDIC/Supervision – EGIS Rail, Egis Batiments International/DB Engineering & Consulting (France, Germany), 2021

## Benefits

- ⦿ More than 400M EUR investment in Riga center
- ⦿ New high-speed connection and regional connectivity
- ⦿ Enhanced safety and access solutions
- ⦿ Reconstruction of existing tunnels and platforms
- ⦿ New street network
- ⦿ Contemporary landscaping solutions
- ⦿ New bridge across the river





# Construction of Rail Baltica Central Station hub



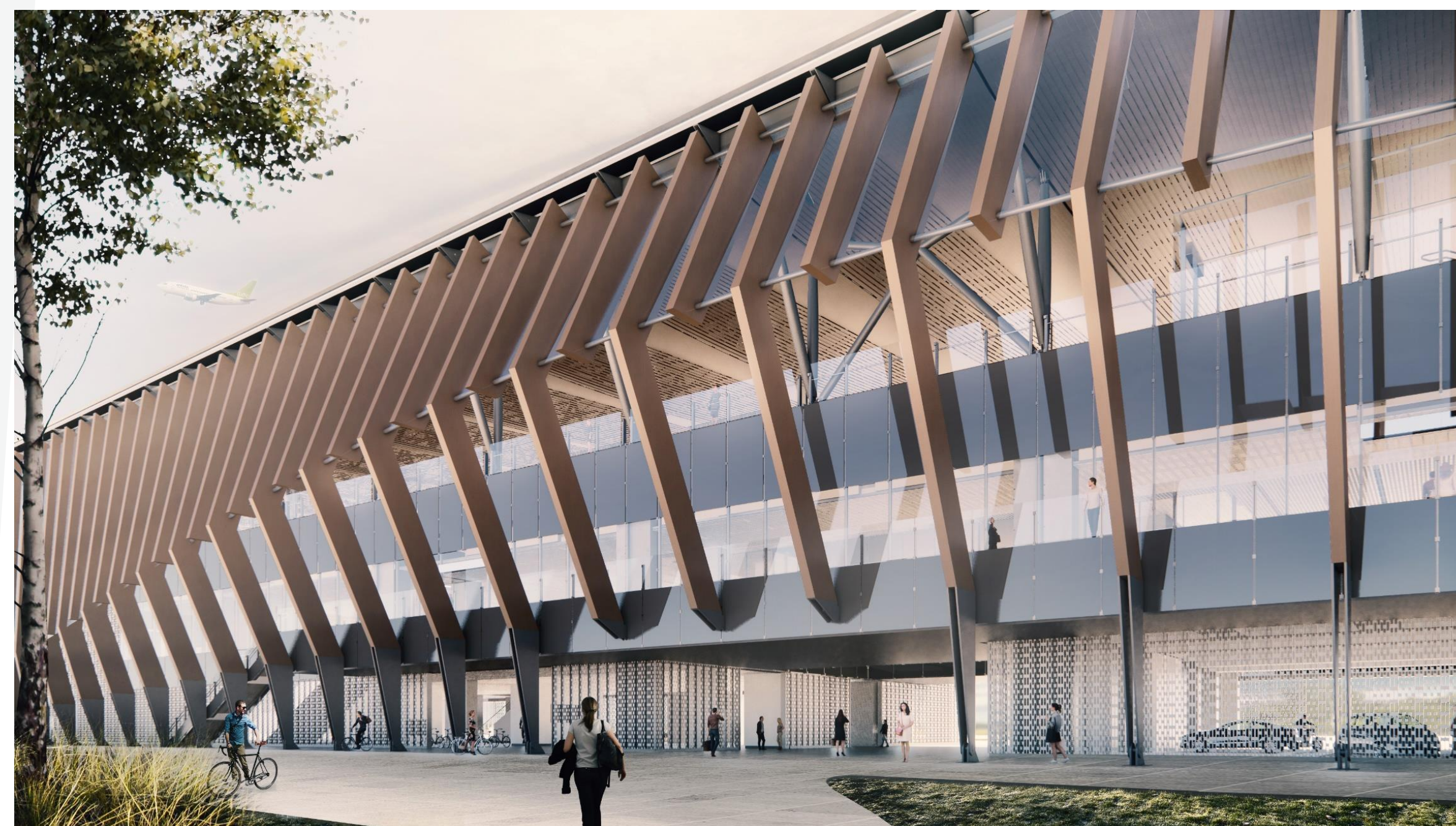


## Rail Baltica station at Riga International Airport

- Design – PROSIV (Prodex (Slovakia), Sintagma (Italy), Vektors T Latvia), 2020
- Construction – B.S.L. Infra (Swietelsky AG (Austria), SIA Binders, AS LNK Industries (Latvia), 2021
- FIDIC/Supervision – Prointec S.A.U (Spain), Forma2 (Latvia), 2021

### Benefits

- Ensures connection between Riga Central and Baltics biggest air traffic hub
- Reconstruction of airport related areas
- Enhanced safety and access solutions
- Air-to-rail service
- Contemporary landscaping solutions





# Construction of Rail Baltica station at Riga International airport





# **Rail Baltica** Latvia design of local facilities





## Salaspils Intermodal Freight terminal

- ⦿ Design – Sintagma (Italy), BRD Projekts (Latvia), 2022
- ⦿ 1 hour distance from Riga Freeport
- ⦿ Design to be ready in 2024

## Benefits

- ⦿ ~ 150ha of multi-modal freight handling services
- ⦿ container handling on both 1435 mm and 1520 mm gauge railways, cross decking capability
- ⦿ road-to-rail services
- ⦿ piggy-back loading and unloading onto specialized train wagons
- ⦿ opportunity to develop production facilities and warehouses in vicinity to the terminal



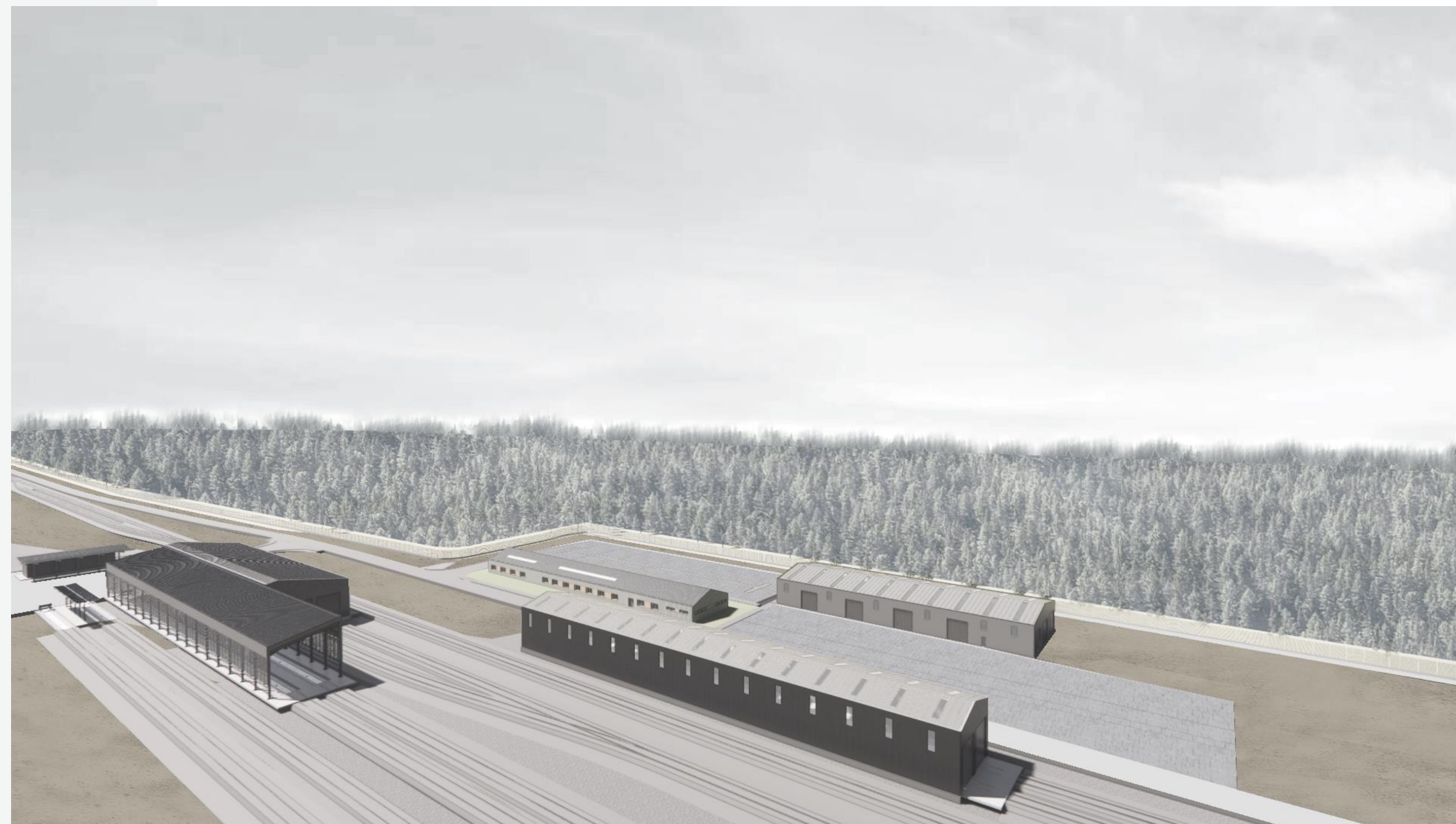


## Infrastructure maintenance facilities

- ⦿ Design – Sintagma (Italy), BRD Projekts (Latvia), 2021
- ⦿ Design to be ready in 2023/2024
- ⦿ Located in Iecava and Skulte

## Benefits

- ⦿ Storage of materials during mainline construction (first BP outside Riga)
- ⦿ Base for infrastructure maintenance mechanisms and materials in the future





## Regional connectivity

- ⦿ Design – RERE VIDE (Latvia), INECO (Spain), 2022
- ⦿ Regional mobility points throughout Latvia
- ⦿ Platforms and access structures
- ⦿ Station buildings
- ⦿ Landscaping solutions
- ⦿ Design completion for 11 out of 17 mobility points in 2024





## Infrastructure management

### Common objective

- ⊙ one-entry point system to ensure open, easy and non-discriminatory access to railway infrastructure

### In Latvia

- ⊙ since 11/2022 EDZL established as interim IM
- ⊙ administrative framework and capacity
- ⊙ studies related to infrastructure management (shadow operator)
- ⊙ infrastructure management model for railway infrastructure and service facilities
- ⊙ legal framework
- ⊙ input to 3B model
- ⊙ know-how
- ⊙ users perspective
- ⊙ verification, operation, maintenance and development – to be ready







Thank you!



[www.edzl.lv](http://www.edzl.lv)



[edzl@edzl.lv](mailto:edzl@edzl.lv)



Ministry of Transport  
Republic of Latvia



Co-financed by the Connecting Europe  
Facility of the European Union

