

LTG

INFRA

Rail Baltica project in Lithuania: progress

Mantas Kaušylas, „Rail Baltica“ Management, Head of Projects Preparation, LTG Infra, 19/09/2023

Project scope in Lithuania



Nearly 400 km



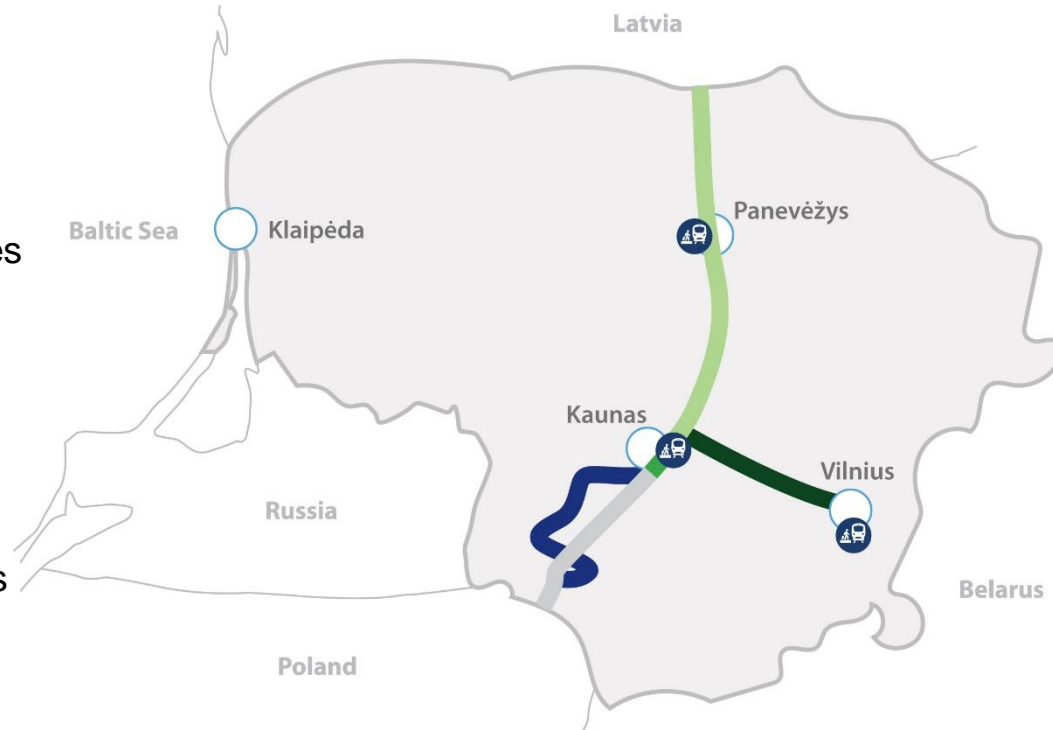
3 transport hubs/nodes



3 international passenger stations



2 intermodal terminals



2 international airports stations



2 infrastructure maintenance facilities



15 regional stations and 2 border stations

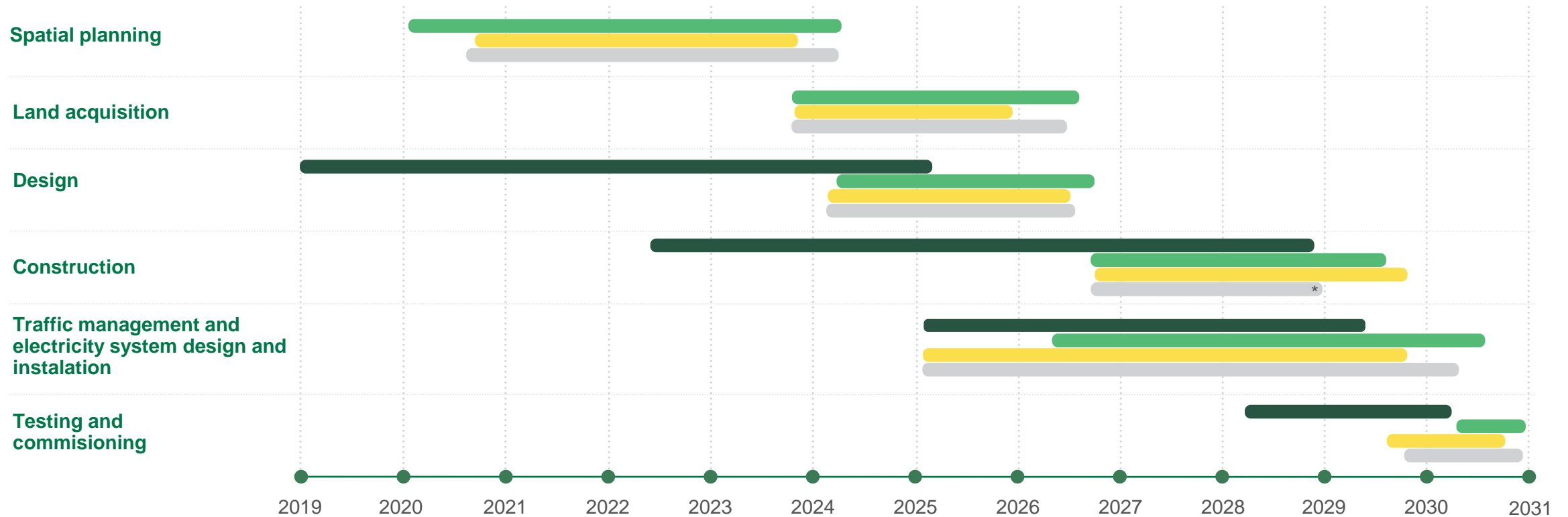


4 railway sections

- LV/LT border – Kaunas
- Kaunas – Vilnius
- Kaunas Urban Node
- Jiesia (Kaunas) – LT/PL border
- RB1 (1435)



Project timeline 2020-2030 in Lithuania



* Kaunas (Jiesia) – Lithuanian/Polish border section: the aim is to have construction finished till 2028 12 (without track leveling and ENE/CCS subsystems).

- Kaunas – Lithuanian/Latvian state border
- Kauno Node
- Kaunas - Vilnius
- Kaunas (Jiesia) – Lithuanian/Polish border



Priorities for 2023



Construction in
direction towards
LT/LV border

Special planning
of both Rail
Baltica mainline
as well as point
type objects

Coordination
and approval of
special plans

Start of land
acquisition for
public needs
projects

Start of point
type objects design
services

Project progress in Lithuania



Planning & Design Stage

- In Kaunas – LT/LV border section land acquisition completed and technical designs progressing
- Kaunas-Vilnius, Kaunas Node & KaunasPL border: design tenders announced;
- International Passenger Stations / Terminals (incl. Vilnius Connect international architecture competition completed)
- Local Passenger Stations / Stops / Halts; IMF; Freight terminals in progress

Construction stage (incl. Procurement)

- Neris bridge (longest in the Baltics) and access roads on Panevėžys – LT/LV border section construction started
- Šėta-Žeimiai 17,7 km and Žeimiai-Šveicarija 10 km sections (embankment and access roads construction in progress)
- Šveicarija-Kaunas 19 km and Ramygala-Šėta 17 km sections (embankment and access roads construction in progress)

Rail Baltica material volumes

Entire Rail Baltica volumes

- Railway ballast ~8 000 000 tons
- Railway concrete sleepers ~3 370 000 pcs.
- Rails ~240 000 tons
- Multiducts – 5 500 km
- Ducts – 3 000 km
- Manholes – 9 000 pcs.
- Cable channels – 480 km
- Noise barriers – 223 km
- Safety fences – 1533 km
- Turnouts systems (300 km/h) – 570 sets
- Turnouts systems (200 km/h) – 563 sets
- Rail expansion joints – 250 sets

Estimation of Lithuanian volumes

- Railway ballast ~ 4 200 000 tons
- Railway sleepers ~ 200 000 pcs.
- Rails – 121 504 tons
- Turnouts systems (300 km/h) – 242 sets
- Turnouts systems (200 km/h) – 227 sets

Construction strategy

Kaunas – Lithuanian/Latvian state border

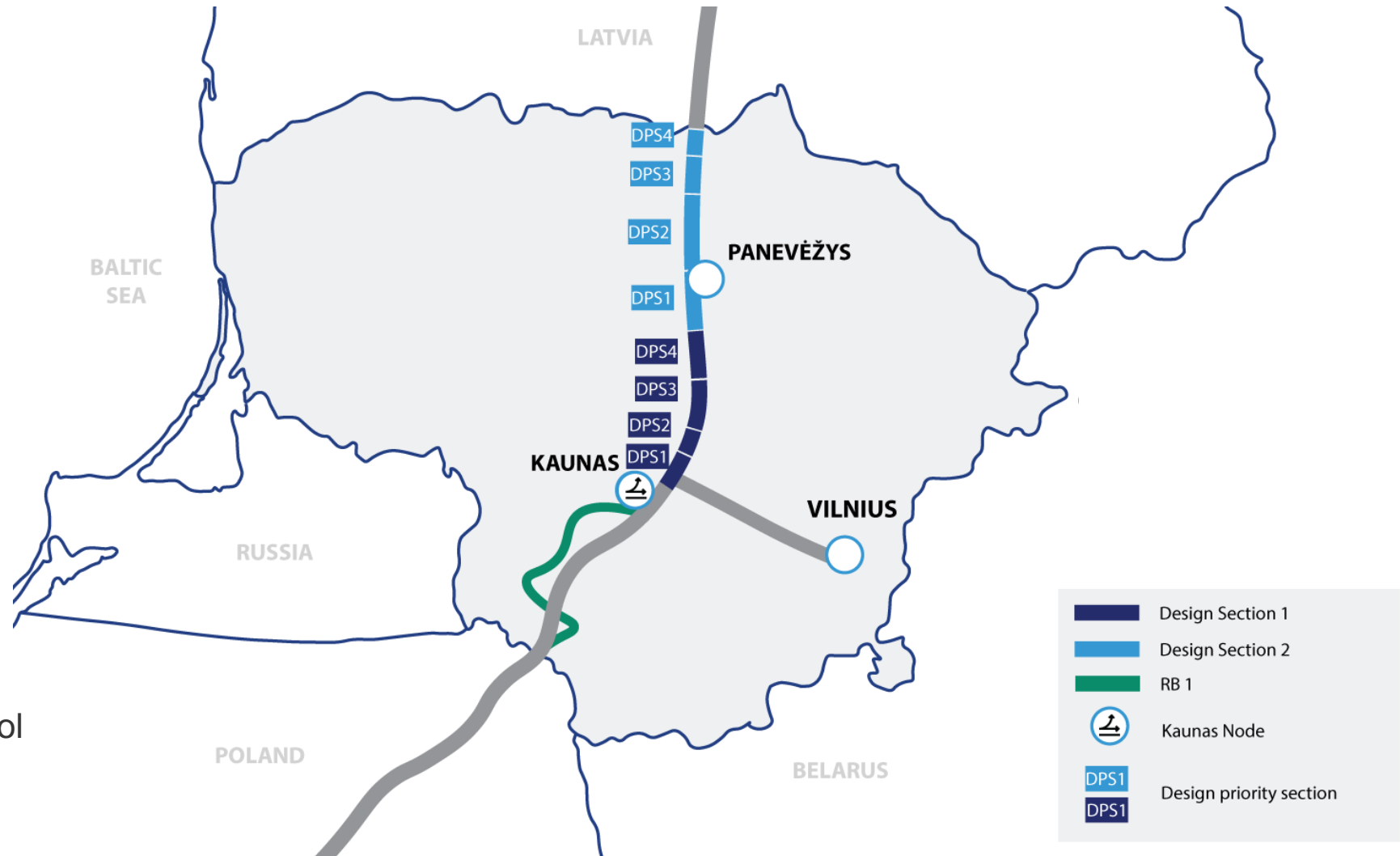
Horizontal split

Construction works are divided into **design priority sections** (DPS) geographically

Vertical partitioning

Scope of construction works:

- Embankment and related structures, access roads;
- Upper track construction;
- Electrification and traffic control system.



Point Type Objects

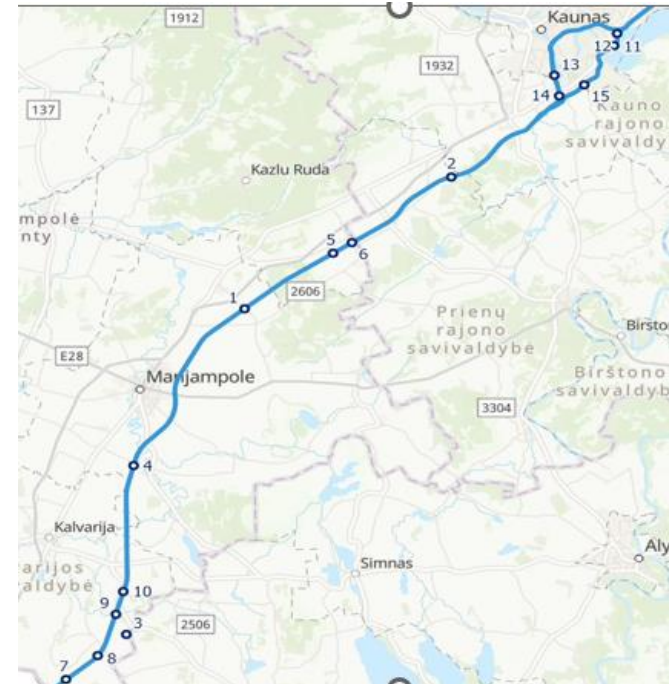


Construction Strategy

- Early start of parallel design and construction of point type objects along PL/LT - Kaunas section and in Kaunas Node.
- For this purpose land needed for construction shall be purchased on commercial basis.
- Land purchase on commercial grounds is faster than the procedure of land acquisition for public needs.
- The construction of such objects takes longer than railway lines.
- Construction of the Poland – Kaunas section will be completed sooner.
- The possibility of purchasing 100 – 150 plots of land is being evaluated for structures of Kaunas node and Poland–Kaunas section.
- **In total 22 Point Type Objects**
- The first meetings with landowners already took place.
- Design procurements announced for the following sections
 - Poland – Kaunas
 - Kaunas Node
 - Kauno Central Stations
 - Infrastructure Maintenance Facilities

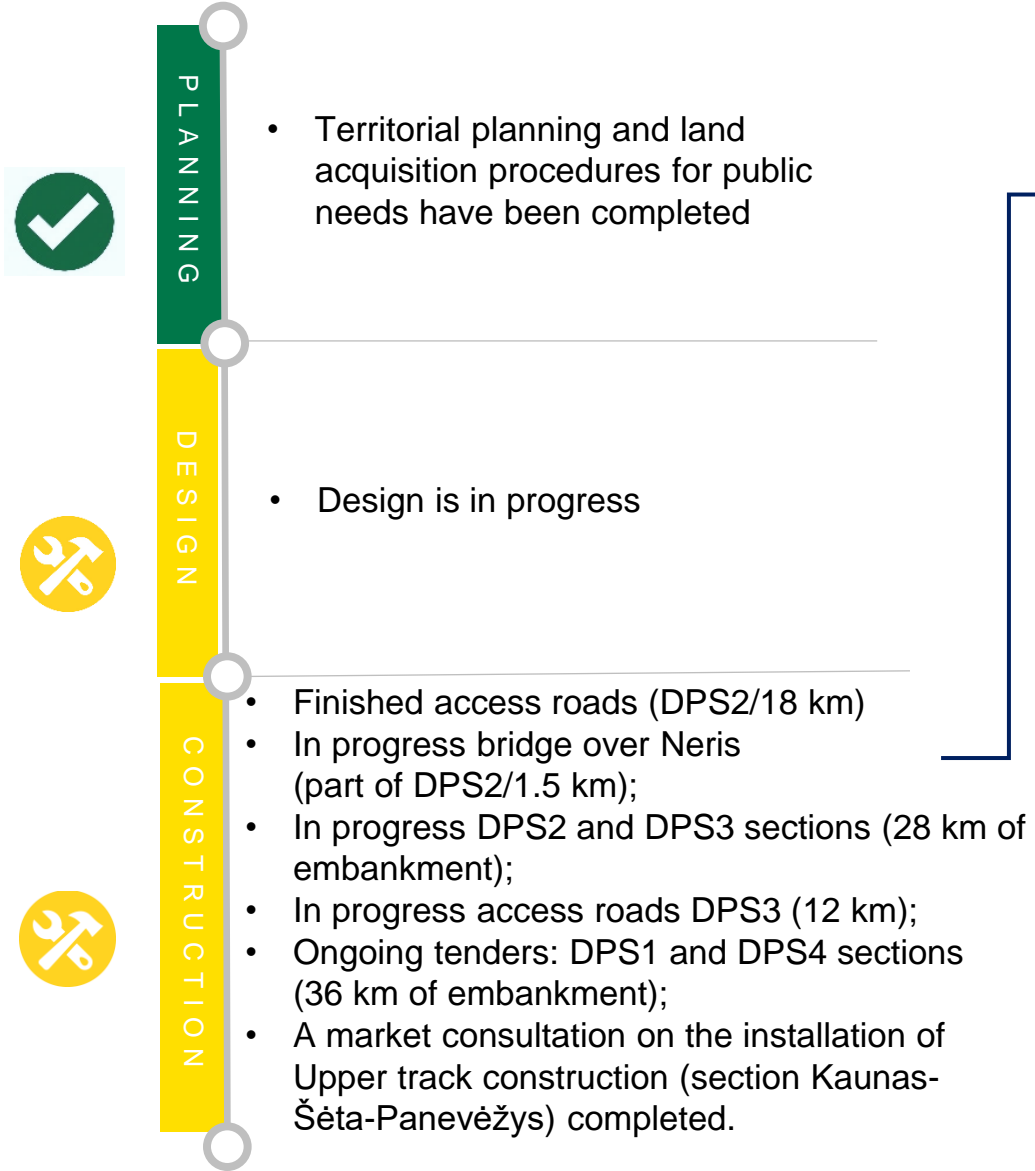
Commercial Land Acquisition Timeline

		
4. LAND PURCHASE	2023 05	2024 09
5. DESIGN	2023 12	2025 02
6. CONSTRUCTION	2025 02	2026 06



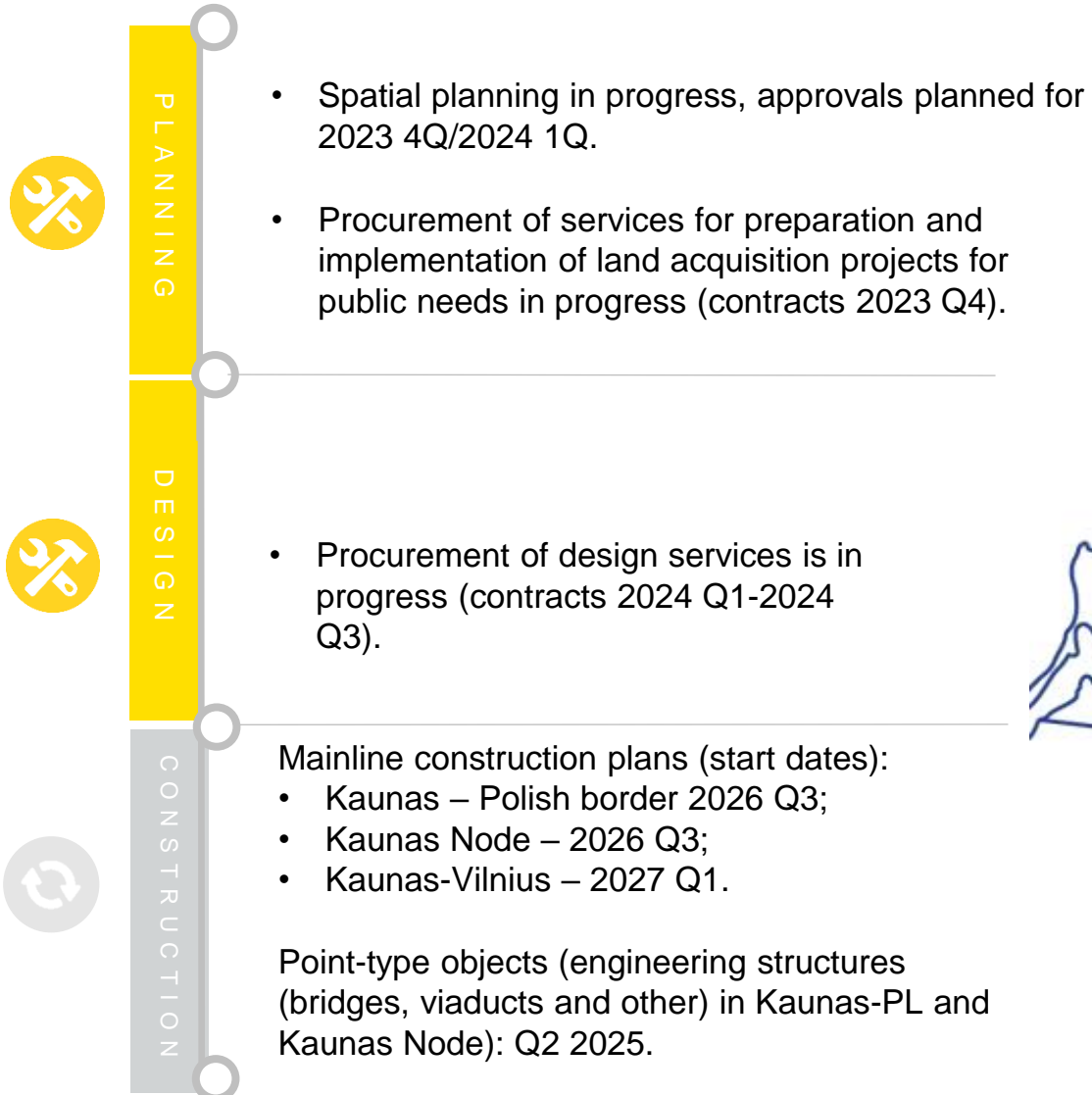
Implementation progress

Kaunas – Lithuanian/Latvian state border



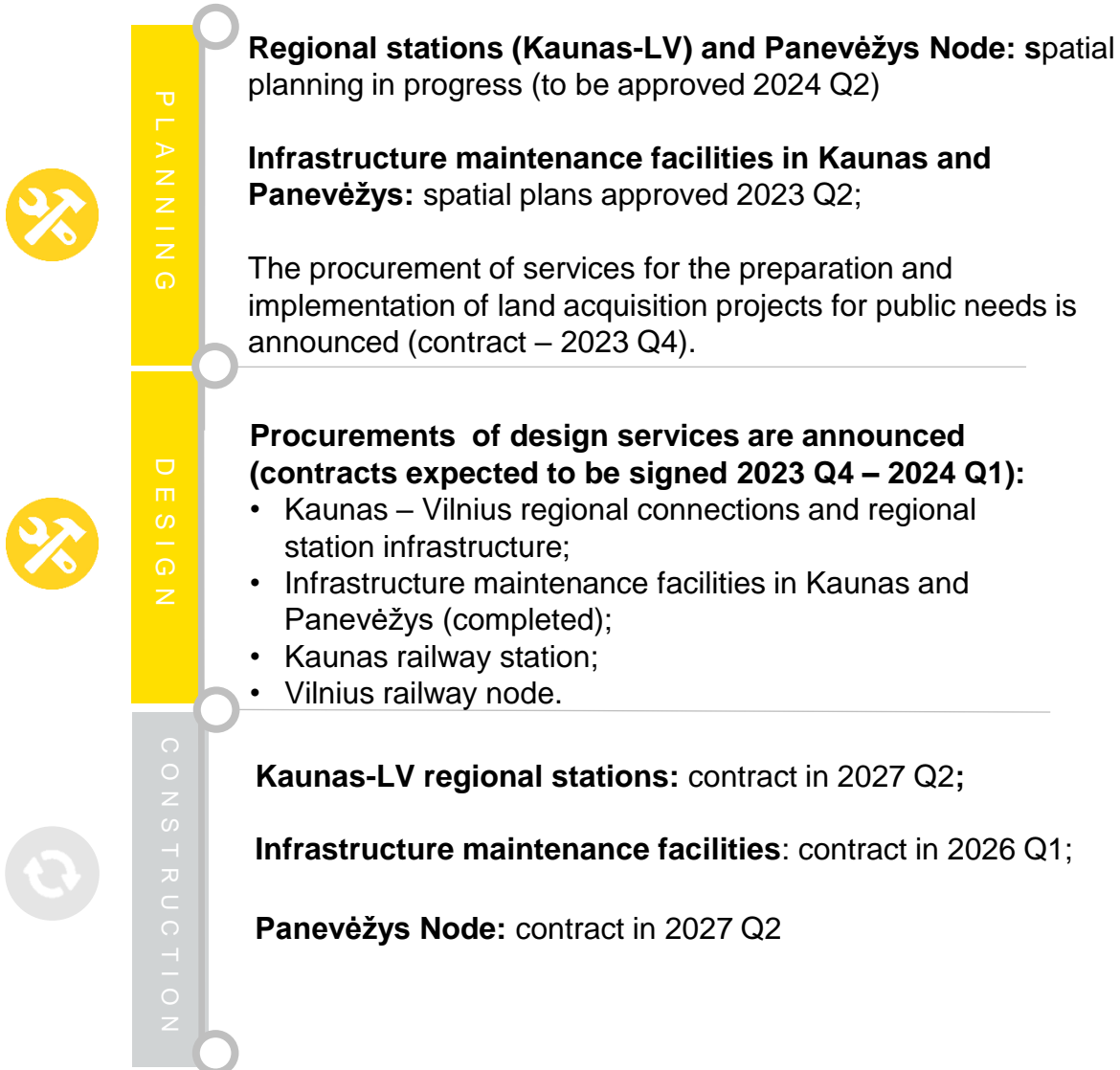
Implementation progress

Kaunas – Vilnius, Kaunas – Lithuanian/Polish border, Kaunas Node



Implementation progress

Local Facilities



Ongoing Contract Procurement (Dynamic Purchasing System)

Title	Announced	Submission Date	Link
Contract works of the “Rail Baltica” railway line Kaunas-Panevėžys-LT/LV (stage I): Installation of a new railway embankment for the double track, construction of engineering structures and roads	06-10-2022	07-10-2027	http://bit.ly/3TVa121
No. 19299 Procurement of laboratory testing and research services related to the contract works of the Kaunas-Ramygala railway line section of the Rail Baltica project	05-02-2022	08-02-2027	http://bit.ly/3nz7crd
No. 15313 Procurement of contract works for the Rail Baltica railway line section Kaunas-Panevėžys-LT/LV contract works (stage I): construction of roads”	14-08-2020	17-08-2025	http://bit.ly/42Nq6ed



FULL PROCUREMENT PLAN:

railbaltica.org/procurements



PROCUREMENT WEBINAR 2023:

<https://www.youtube.com/@RailBalticaGlobalProject>

Procurement Plan 2023



Procurement title	Indicative start date	Status
DESIGN		
Design of 1435 mm gauge railway infrastructure in Panevėžys Node	2023-10	Tender to be announced 2023-10 (tentatively). Start of services 2024-07 (tentatively).
Design of regional stations in Kaunas – LT/LV border section of 1435 mm railway gauge	2023-10	Tender to be announced 2023-10 (tentatively). Start of services 2024-07 (tentatively).
Procurement of design services for Point Type Objects (17-24 units) under preparation	2023-11	tender to be announced 2023-11 (tentatively). Start of services 2024-04 (tentatively).
CONSTRUCTION, CONSTRUCTION SUPERVISION SERVICES		
DPS1 Kaunas – Šveicarija 0.50 – 19.4 km (18.9 km) embankment and structures: construction supervision and FIDIC engineer services	2023-10	Tender to be announced 2023-10 (tentatively). Start of services 2024-04 (tentatively).
DPS4 Šėta – Ramygala 48.8 - 65.9 km (17.1 km) embankment and structures, connecting roads: construction supervision and FIDIC engineer services	2023-10	Tender to be announced 2023-10 (tentatively). Start of services 2024-04 (tentatively).
Kaunas – LT / LV Border upper track construction installation	2023-11	Tender to be announced 2023-11 (tentatively). Start of services 2024-11 (tentatively).
EXPERT CONSULTING AND EVALUATION SERVICES		
Independent assessment of infrastructure design of regional connections and regional stations on the Kaunas (Kaunas Node) – Vilnius (Vilnius Node) section of the 1435 mm gauge railway line	2023-10	Tender to be announced 2023-10 (tentatively). Start of services 2023-12 (tentatively).
Independent assessment of infrastructure design of 1435 mm gauge railway line in Vilnius Node	2023-10	Tender to be announced 2023-10 (tentatively). Start of services 2023-12 (tentatively).

Our expectations and advice



EU Sanctions and related screening procedures – new factor to be considered

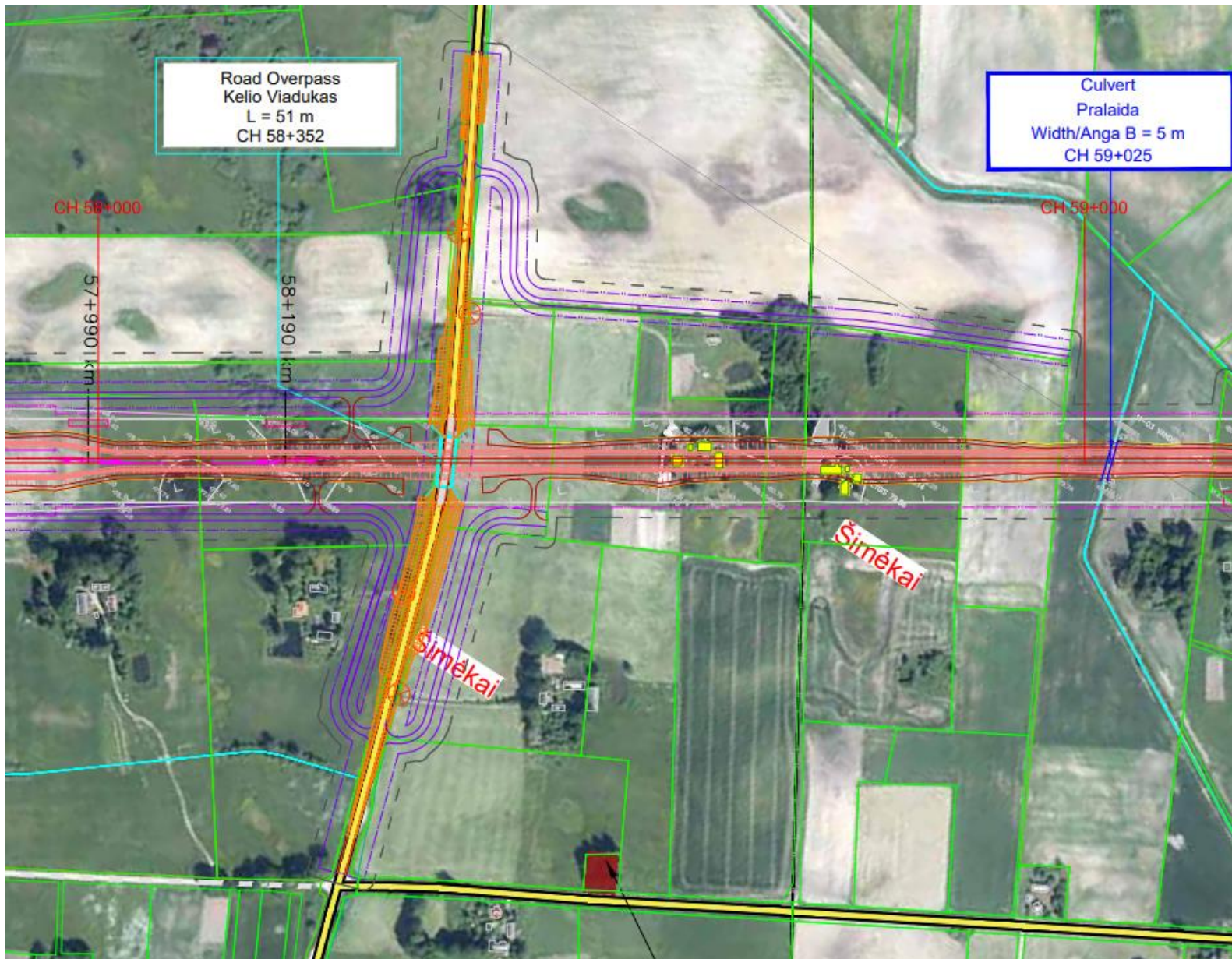
Follow project news and procurements:
www.ted.europa.eu
www.railbaltica.org
www.pirkimai.eviesiejipirkimai.lt

Plan & prepare not only for procurement, but also for contract execution

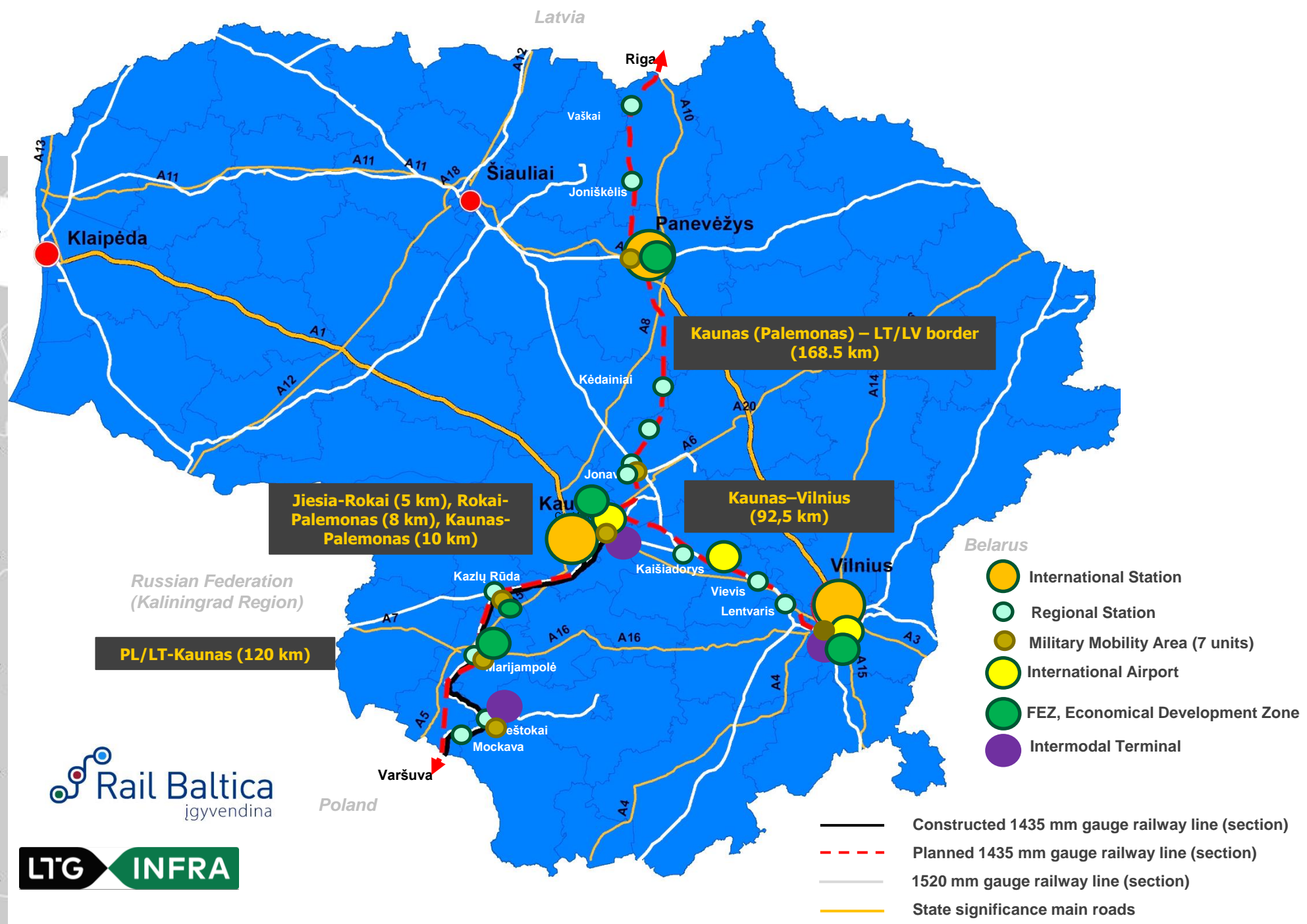
During tenders, submit your questions as soon as you have them

Be proactive and let us know what may be improved

2.	Automobile viaduct	58+352	Kazlų Rūdos mun., Plutiškių sen., Šimėkų k.
----	--------------------	--------	---



„Rail Baltica” infrastructure development in Lithuania





For more information:

- Global Project website (procurements): <https://www.railbaltica.org/tenders/>
- The latest information on all Rail Baltica procurements in LT, LV and EE can be found here: <https://www.railbaltica.org/rail-baltica-procurement-webinar-2023-current-procurements-supplier-feedback-and-update-on-common-procurement-standards-and-guidelines/>
- All public procurements organized by LTG Infra are announced also on the website www.ted.europa.eu.
- Regarding ongoing tenders: antanas.kucikas@ltg.lt
- Regarding upcoming tenders: GIR@litrail.lt (Cc: mantas.kausylas@ltginfra.lt; vytautas.tilinskas@ltginfra.lt; skirmantas.buivydas@ltginfra.lt)
- We kindly invite you to follow us on LinkedIn: <https://www.linkedin.com/company/rail-baltica-in-lithuania/>
- Implementing Body (Lithuania): LTG Infra Rail Baltica Management: GIR@litrail.lt



Let's cooperate!

Mantas Kaušylas

Head of Projects Preparation

Rail Baltica Management, LTG Infra

mantas.kausylas@ltginfra.lt

Mob. + +370 626 35520

ltginfra.lt | www.rail-baltica.lt | www.railbaltica.org