

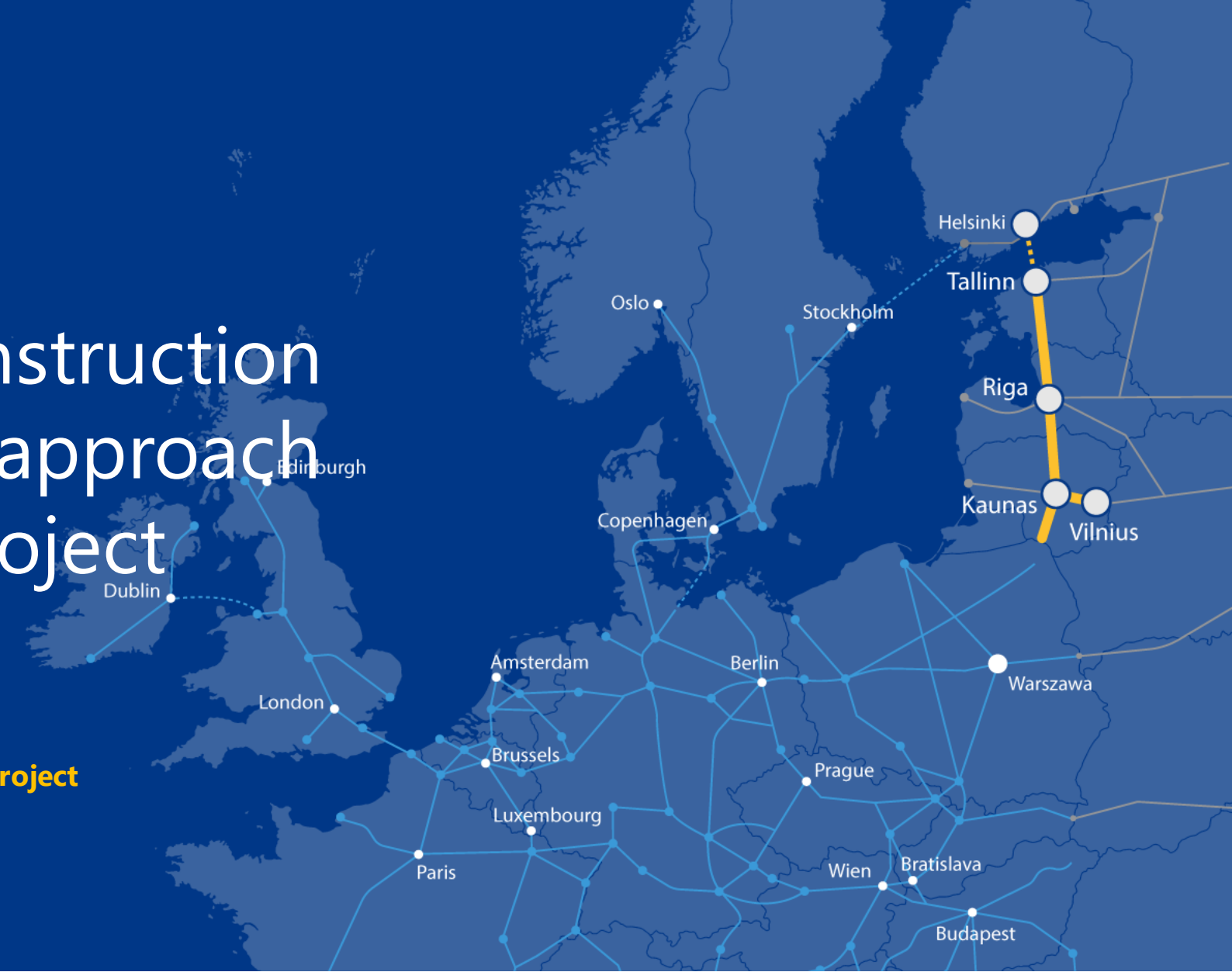


Consolidated construction materials supply approach for Rail Baltica project

TRAKO 2023

Jānis Oga, Deputy Construction Materials Project Manager RB Rail AS

September 2023



Co-funded by
the European Union

Consolidated Material Supply Procurement

Rail Baltica global project has selected consolidated material supply procurement approach for the following groups of materials:

- Rails
- Turnout systems
- Sleepers including fastening systems and under sleeper pads
- Railway ballast
- Cable through materials

Consolidated Material Supply Procurement

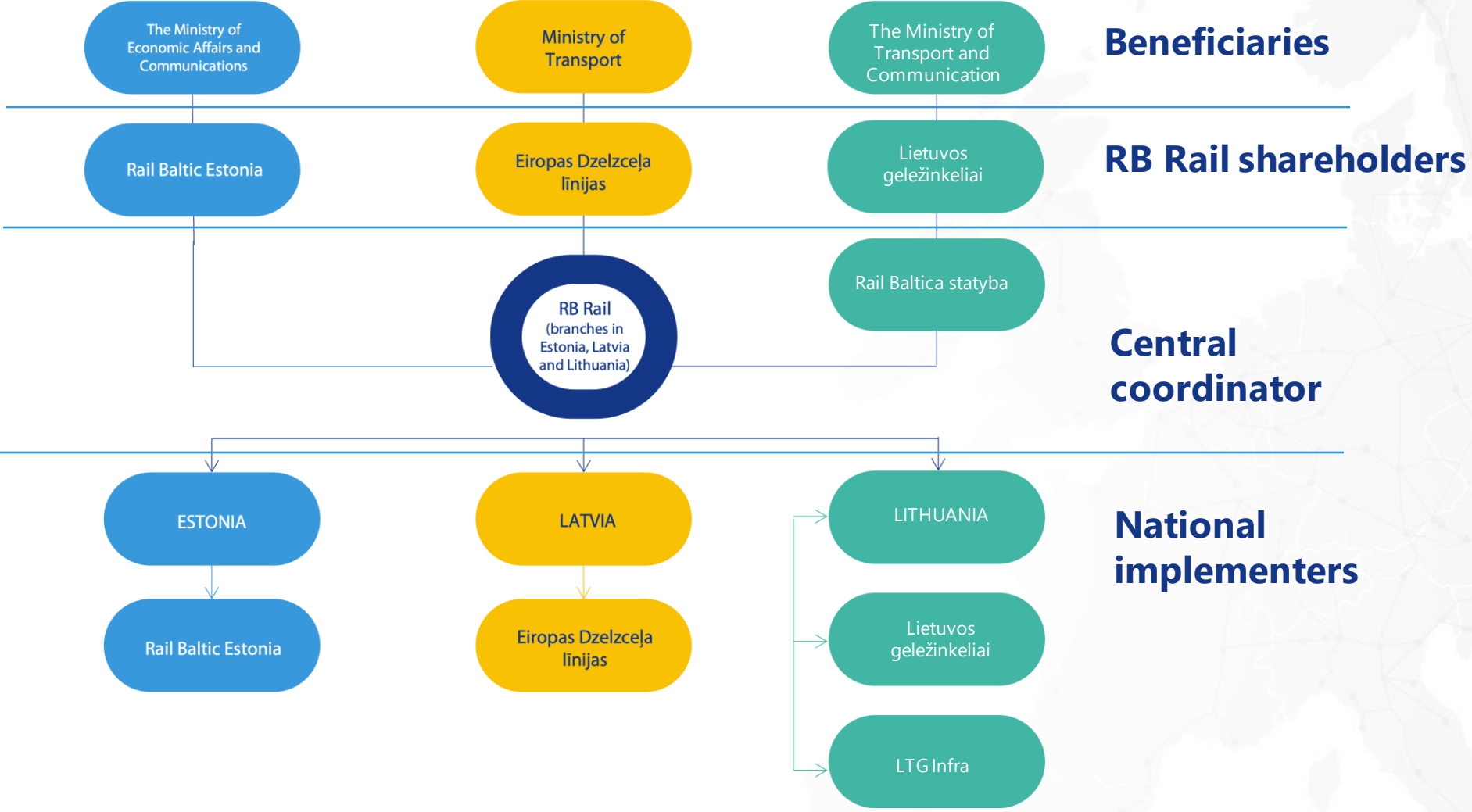
With the aim to:

- Strengthen interoperability
- Benefit from economy of scale
- Avoid distortions in market
- Introduce planning for the entire scope
- Facilitate environmentally friendly supplies

For the benefit of:

- Provide saving for CAPEX
- Reducing operational costs for the maintenance
- Ensuring standardisation for entire railway line
- Reducing impact on environment and infrastructure
- Ensuring transparency for the global project supplies

Project Delivery Organization



Consolidated material quantities to be delivered



9 100 000 tons of railway ballast

EQUAL TO:



2 x Great Pyramids of Giza



140 000 x train wagons

5 200 train sets

Country	Tons	Wagons	Trucks
Estonia	2 300 000	35 000	92 000
Latvia	2 600 000	40 000	104 000
Lithuania	4 200 000	65 000	168 000



3 790 000 pcs. of railway concrete sleepers

EQUAL TO:



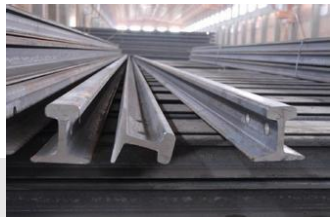
650 x Great Wall of China



14 500 x train wagons

580 train sets

Country	Pcs.	Tons	Trucks
Estonia	977 000	293 000	11 720
Latvia	1 125 000	337 000	13 480
Lithuania	1 688 000	506 000	20 240



272 550 tons of rails

EQUAL TO:



33x Eiffel towers



20 190x train wagons

Consolidated material quantities to be delivered



570 sets of Turnouts systems (300 km/h)
563 sets of Turnouts systems (200 km/h)
250 sets of Rail expansion joints



5 500 km of Multiducts
3 000 km of Ducts
9 000 pcs. of Manholes
480 km of Cable channels

Country	Tons	Length, km	Wagons
Estonia	70 600	1 177	5 230
Latvia	80 950	1 349	6 000
Lithuania	121 000	2 015	8 960

Delivery and Distribution

Material Storage Location / Main Delivery Places

Future Infrastructure maintenance facility locations in the construction phase as main construction material bases with the connection to the existing 1520 mm gauge railway network.

Servicing area

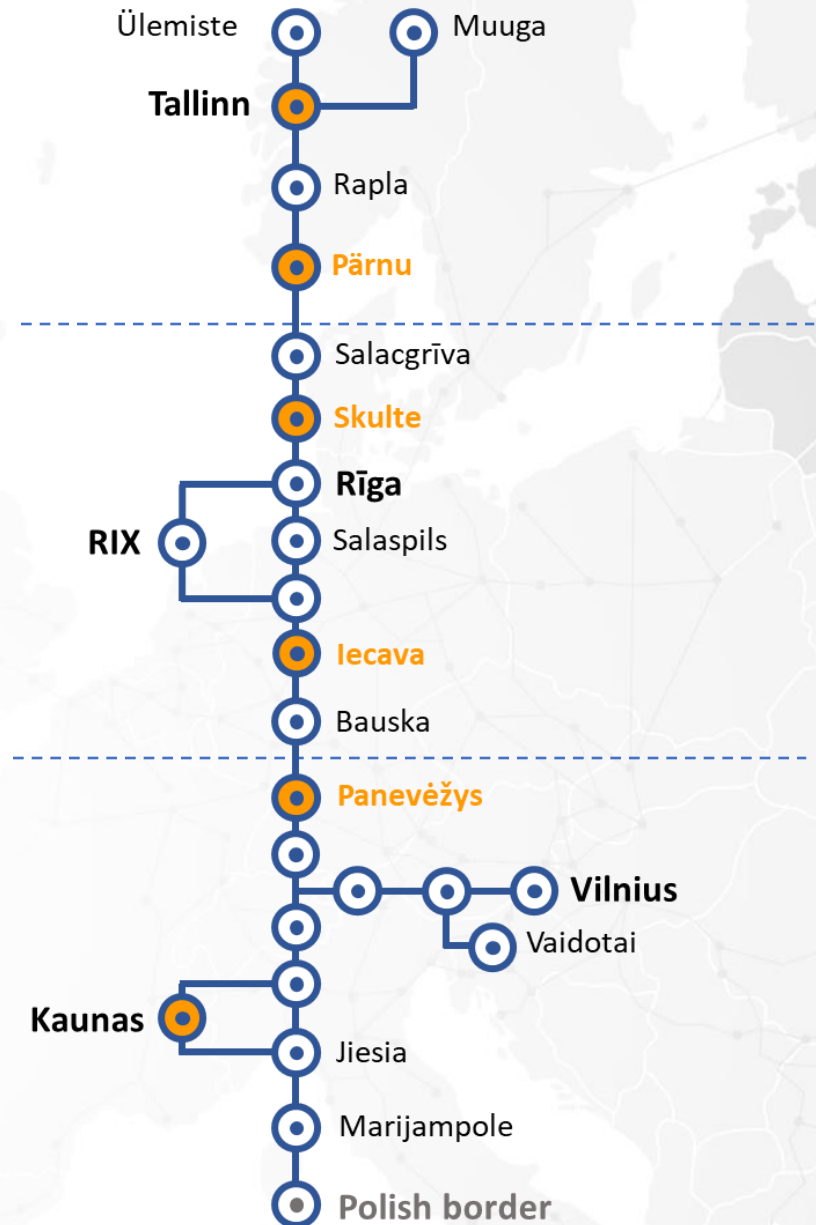
- Distance between the material bases ~100 km
- Distribution of the material from one material base 50 km to both directions from the base
- For certain groups of the materials where the handling conditions allows delivery locations may be within the servicing area ensuring delivery at the construction site

Flexibility

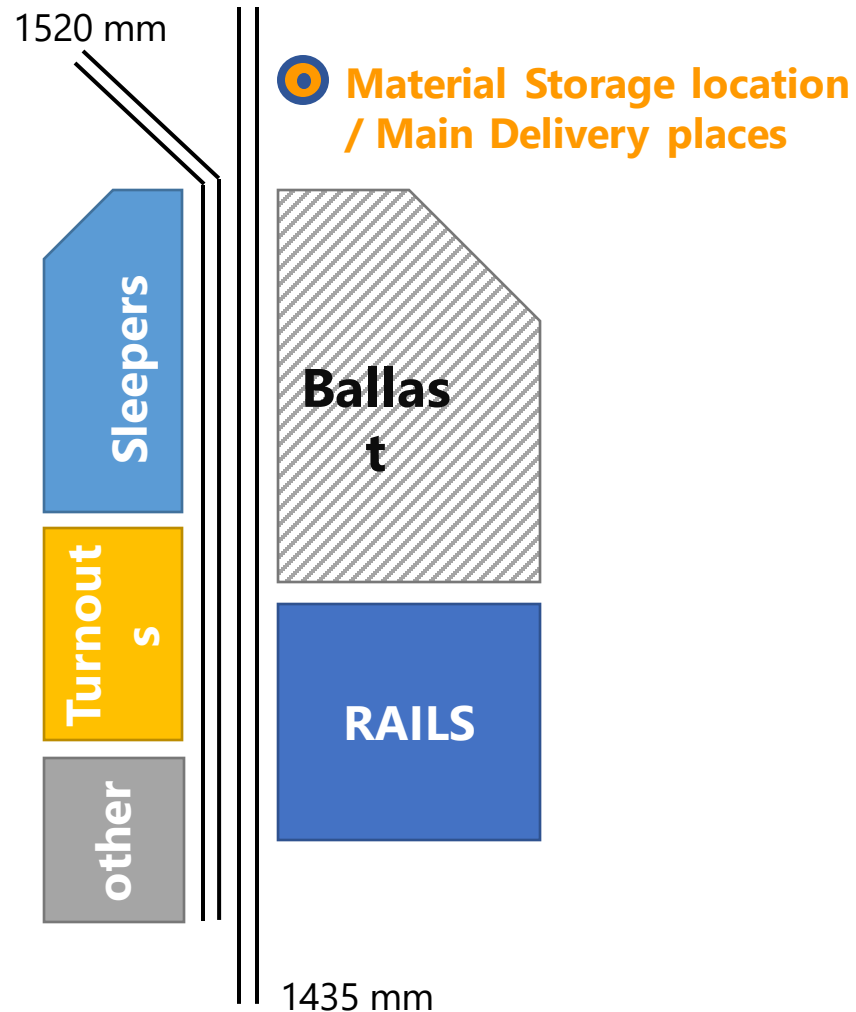
Supply framework agreements to foresee possibility for the alternative delivery locations in the event if the alternative location shall meet the material handling and unloading conditions.

Free issue of the material

Construction contractor to access to the required amount of the materials in accordance with placed orders, material supply schedule in line with work execution plan.



Planning and Ordering



Ordering system

- To manage the orders, follow-up the quantities and to align the ordered volumes with the expected work execution plan
- System to ensure that suppliers have confirmed the orders placed, to deliver in time and/or to address any changes with placed orders

Rolling forecast schedule

- Information on work execution plans and required amount of the material for upcoming period required from Contractors to be delivered and inserted into the system to support manufacturers with the resource planning and logistics same time such approach shall address the risk of possible shortages of the material

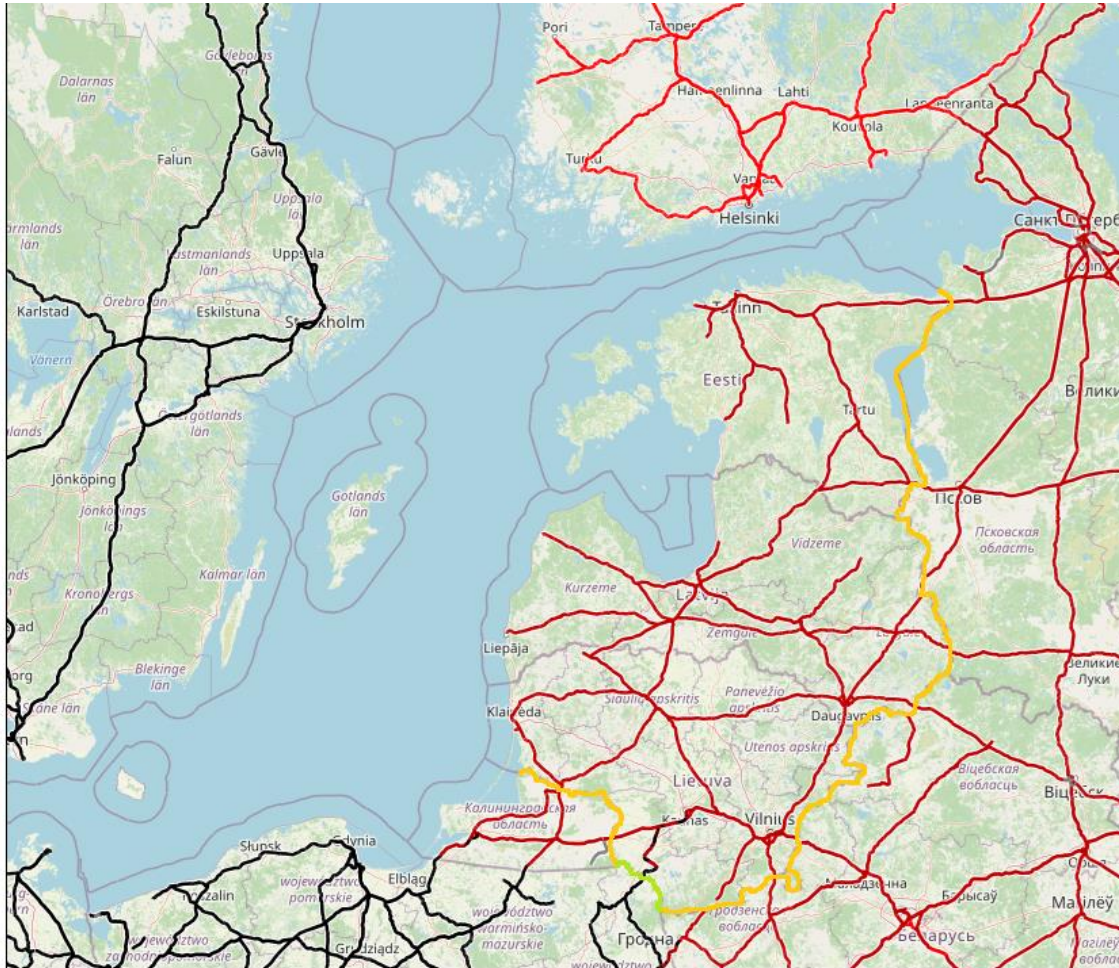
Stockpile

- Material bases shall serve as a stockpile for certain groups of the products to ensure that sufficient amount of the material is available through out the construction works

Early ordering and handover to contractor

- For the time period of the establishment of the sites and while contracting construction works initial supplies shall be communicated with suppliers and after the contracting construction works ordering shall be handed over to the Contractor

Logistics challenges



- Border with Poland
- Border with Russia/Belarus
- 1520 mm railway network
- 1435 mm railway network

- Most of construction materials supplied in a consolidated way are produced outside of Baltics states.
- Logistics include of using multiple mean of transports as well as will involve multiple handlings between used types of transports.
- Rail Baltica is enabling solutions for environmentally friendly logistic chains to provide sustainable solutions for the Suppliers.

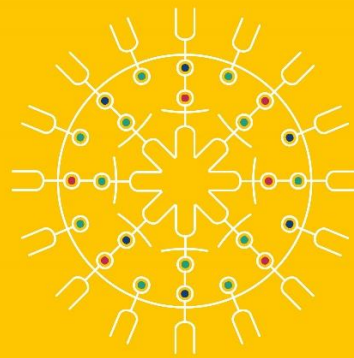


OUR VISION

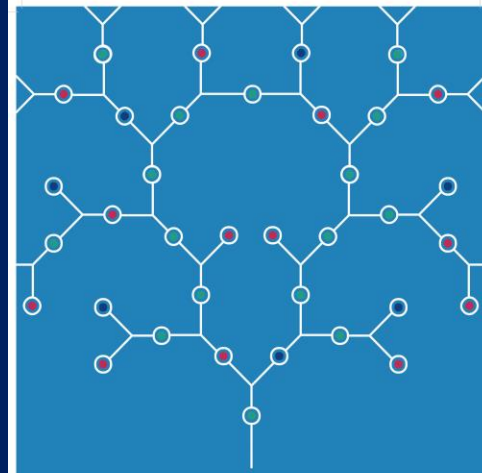
**Connected Baltics in a
connected Europe**

OUR MISSION

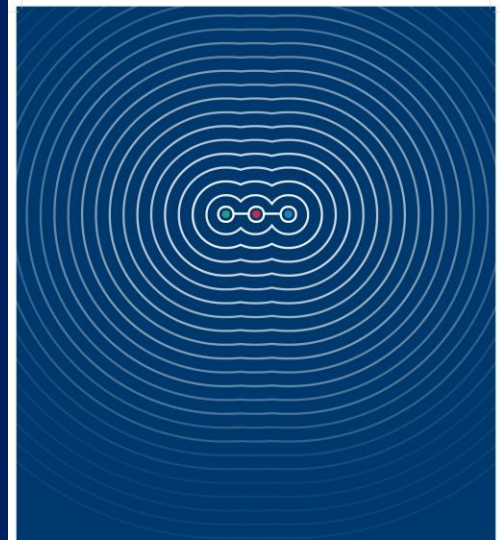
**We are delivering a seamless mobility for
people, goods and services to accelerate
social and economic development in the
Baltics and beyond**



WE VALUE PEOPLE



WE VALUE PROFESSIONALISM



WE VALUE PURPOSE

Thank you!