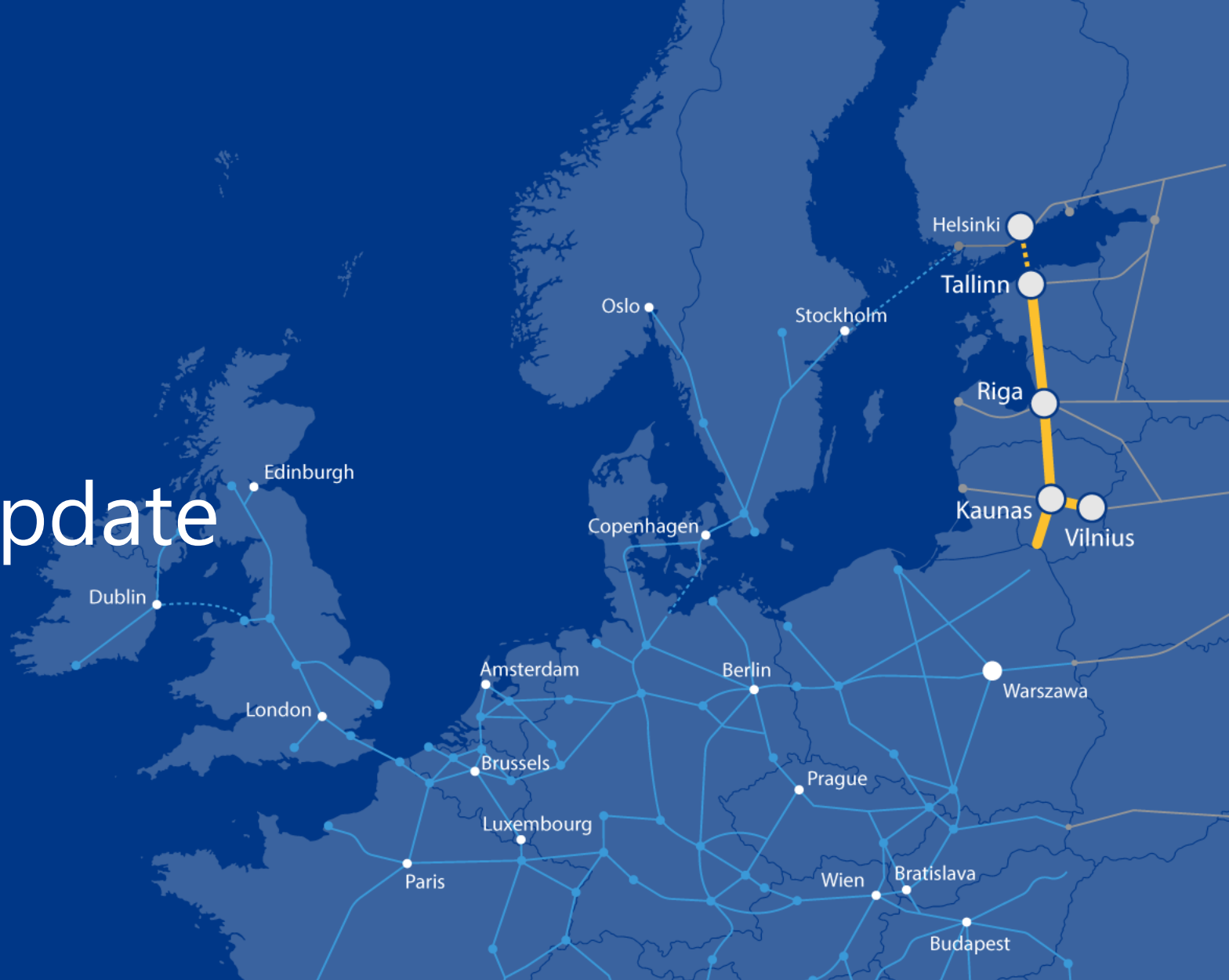




# Rail Baltica global project update

20 September 2023

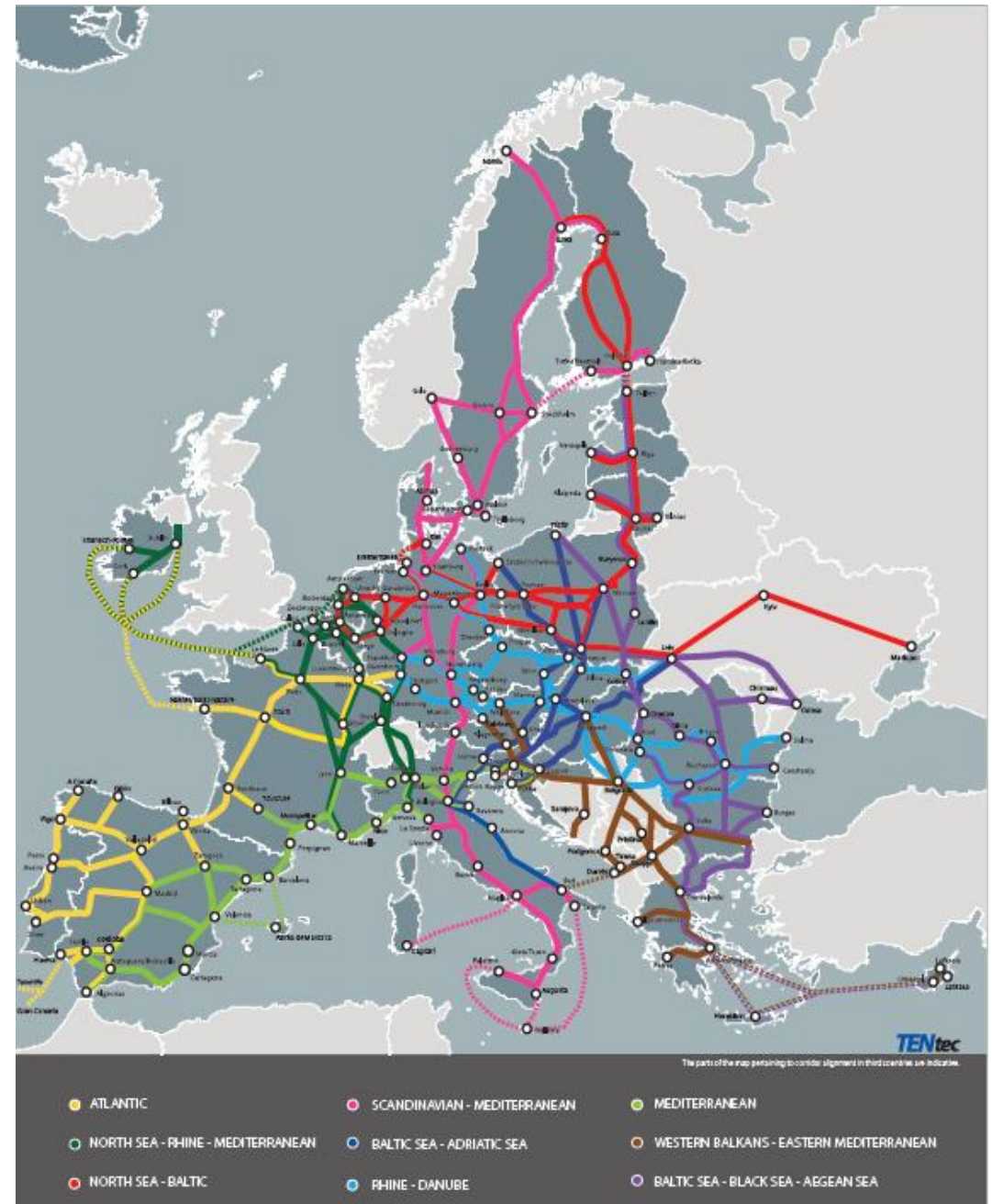


Co-funded by  
the European Union

# Potential infrastructural synergies along the Rail Baltica multimodal transport corridor

- Part of the North Sea - Baltic Sea TEN-T corridor
- Part of the Baltic Sea - Black Sea - Aegean Sea TEN-T corridor\*
- Basis for a new economic and security corridor in the Baltic region and the European Union
- **Maturity as precondition for using the momentum and opportunities!**
  - 2014 – 2020 MFF: focus on «use it»
  - 2021 – 2027 MFF: build readiness for additional funds
  - 2028+ MFF: start preparations
  - National (co-)financing readiness

\*According to 5/12/2022 General Agreement of the EU TTE Minister's Council



# Rail Baltica – part of the North Sea-Baltic core network corridor

- Bridging a missing transport link
- New economic and security corridor
- Delivering EU, regional and national ambitions
- Best-practice learning, building and sharing
- Geopolitical obligation, not just a necessity

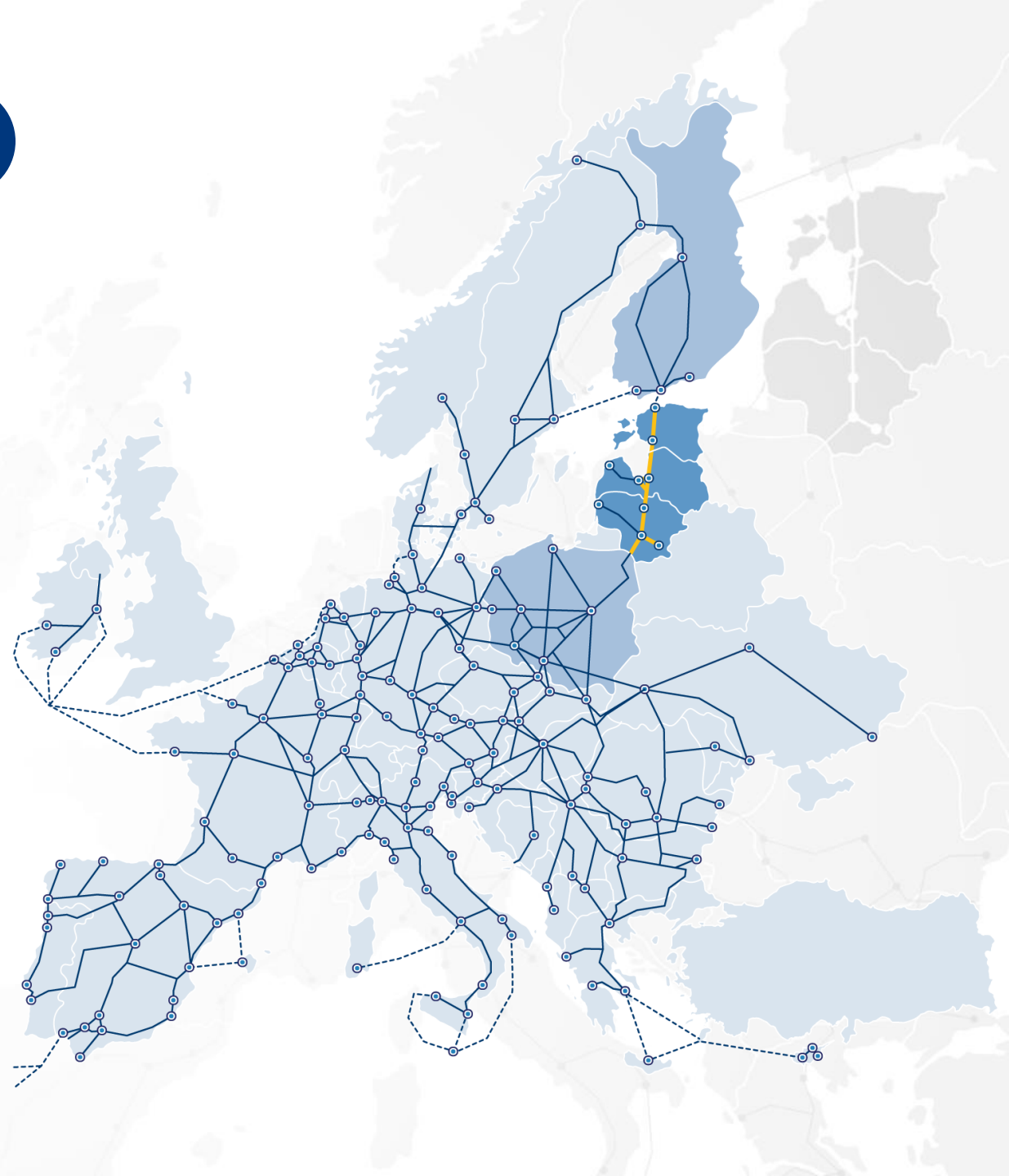
Removing a bottleneck for cargo and passenger traffic. High speed railway



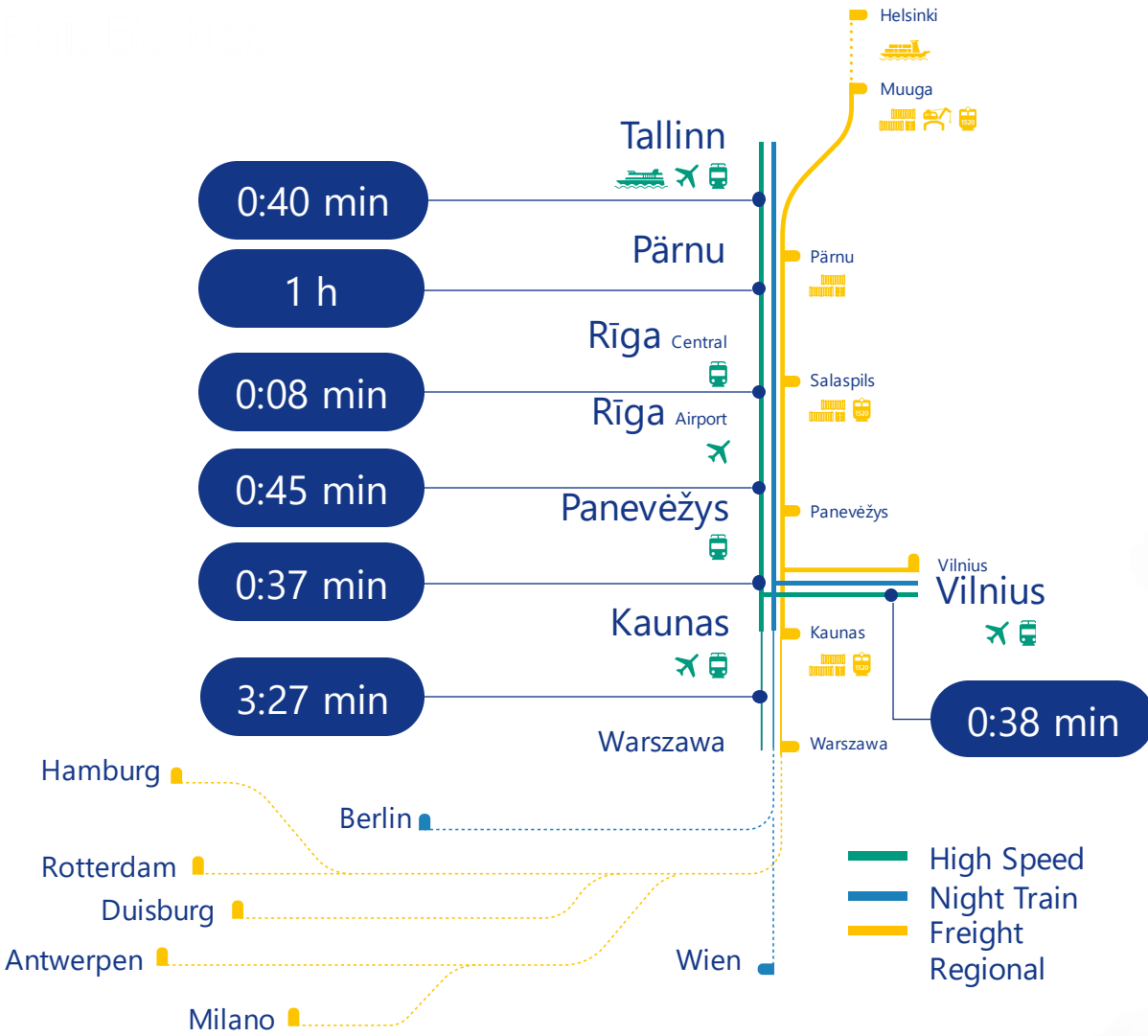
Climate, sustainability and safety goals. Sustainable economic development



Multimodal connectivity and business opportunities. Catalyst for development

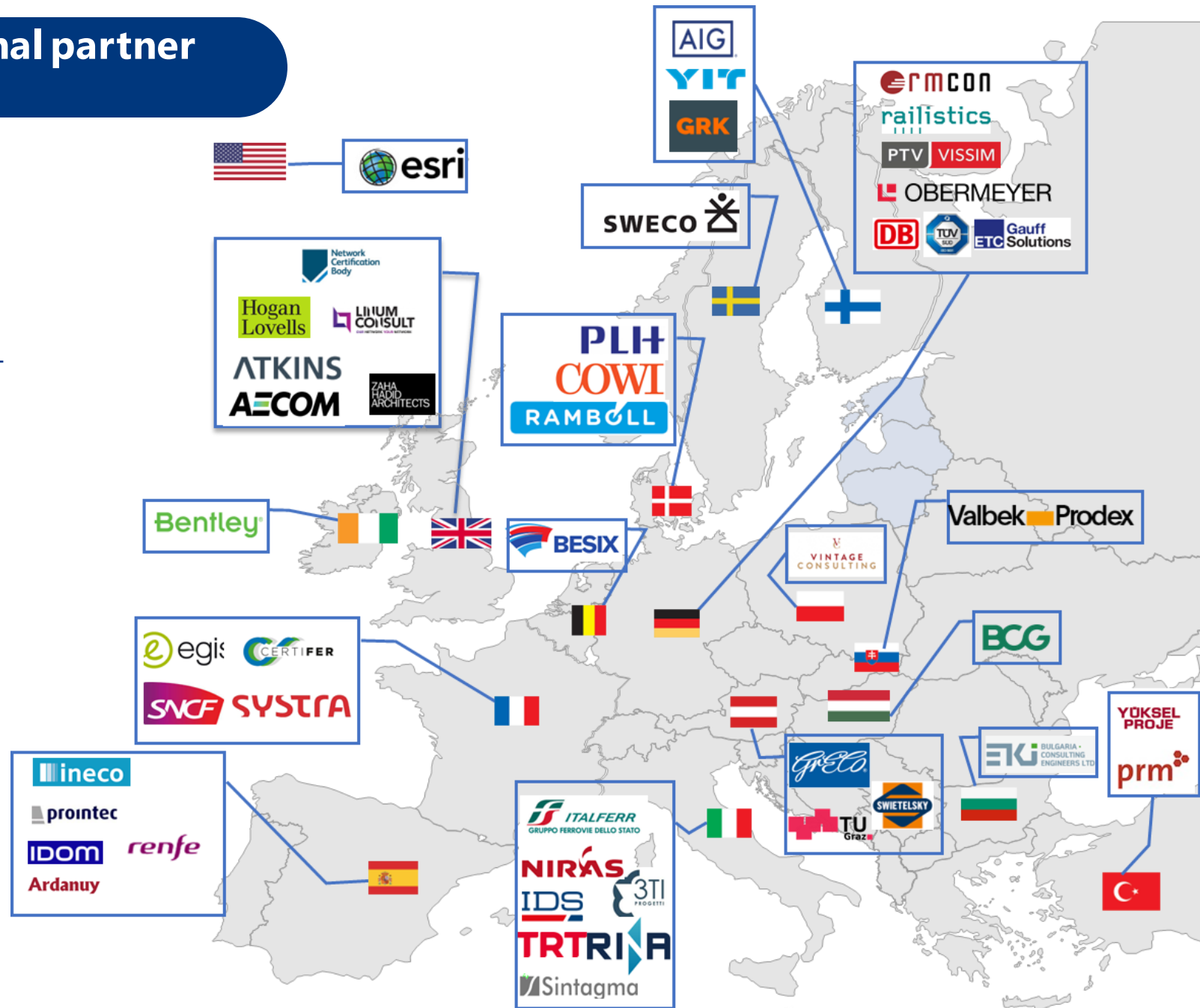


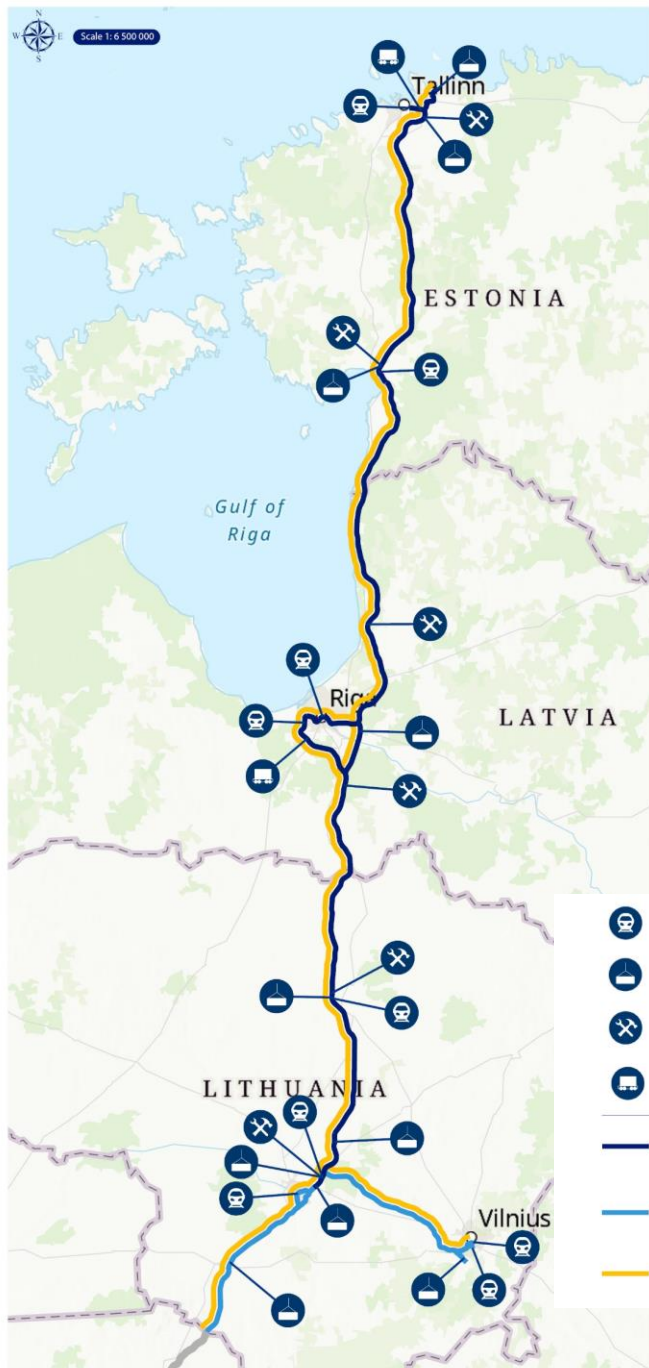
# Basis for new economic corridor and military mobility



# Wide international and regional partner network

- More than 150 active contracts with total value above 1bn EUR. Over 50 international partnerships - European industry strongly represented
- Creating synergy with local companies – increasing local competencies and competitiveness on European level
- Proactively addressing the current geopolitical context in the existing contracts and future procurements
- Continuous mobilisation of existing and future suppliers, showcasing Baltics as safe place for doing business long-term
- Implementing international best ESG practices





## Progress across all project disciplines

### Design & Planning

- Design works advanced on more than 640km; alignment for Kaunas – Lithuanian / Polish border and Kaunas-Vilnius section
- Synchronizing schedule with Poland
- Work on operational readiness topics ongoing

### Construction

- First phase works progressing in all three countries (stations, bridges, viaducts, animal passages, etc.)
- Main line construction procurements ongoing in Lithuania, Latvia and in Estonia
- Consolidated materials' procurements progressing

### Railway subsystems development

- Electrification & control-command and signalling subsystem 870km design & build procurement ongoing (2nd stage announced)

### Delivery Programme 2030

- 2030 target date confirmed by 3B Transport ministers in January 2023
- Focus on technically feasible scheduling of works in Baltics and with Poland
- Design schedule stabilisation as precondition to start of count-down
- Investment cost update ongoing, to be finalised with the updated Cost-Benefit Analysis and new-generation Business Plan in 2024
- Inter-institutional Project delivery set-up improvements

# Rail Baltica project timeline

2023

- Mainline designs' completion
- Delivery programme 2030
- Market readiness for material supply & logistics (incl. consolidated material procurements)
- New generation Cost-Benefit Analysis and Business Plan
- Decisions to ensure operational readiness (IGA on infra management and exploitation model, rolling stock etc.)

2024-2027

- **Construction!**



2028-2030

- Testing
- Validation
- Operations & full interoperability ensured
- New economic and security network corridor developed

Construction in progress

Gradual start of operations

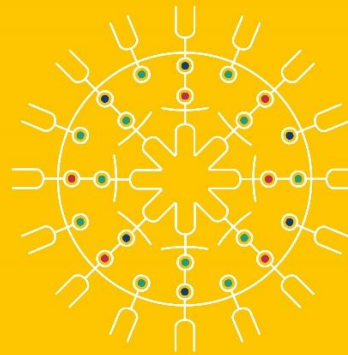


**OUR VISION**

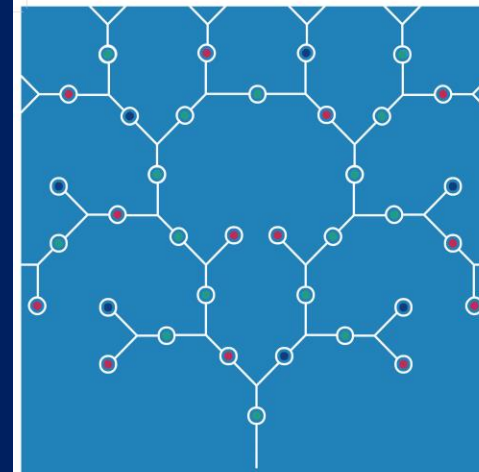
**Connected Baltics in a  
connected Europe**

**OUR MISSION**

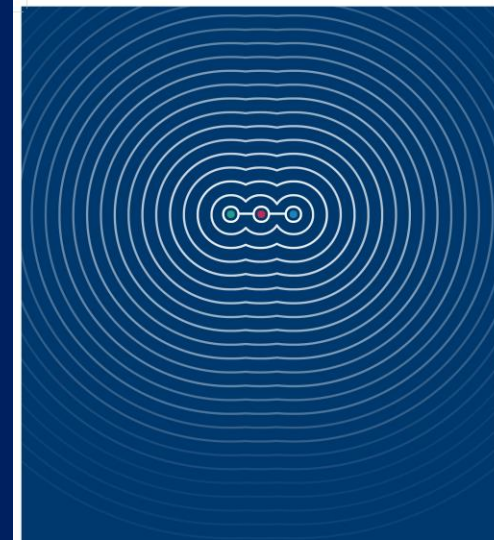
**We are delivering a seamless mobility for  
people, goods and services to accelerate  
social and economic development in the  
Baltics and beyond**



**WE VALUE PEOPLE**



**WE VALUE PROFESSIONALISM**



**WE VALUE PURPOSE**

**Thank you!**