

The logo for LTG, consisting of the letters 'LTG' in white on a dark green background.

LTG

The logo for INFRA, consisting of the word 'INFRA' in dark green on a white background.

INFRA

Rail Baltica project in Lithuania: progress and procurement plans

Mantas Kaušylas, Head of Projects Implementation at Rail Baltica Management

Project scope in Lithuania



Nearly 400 km



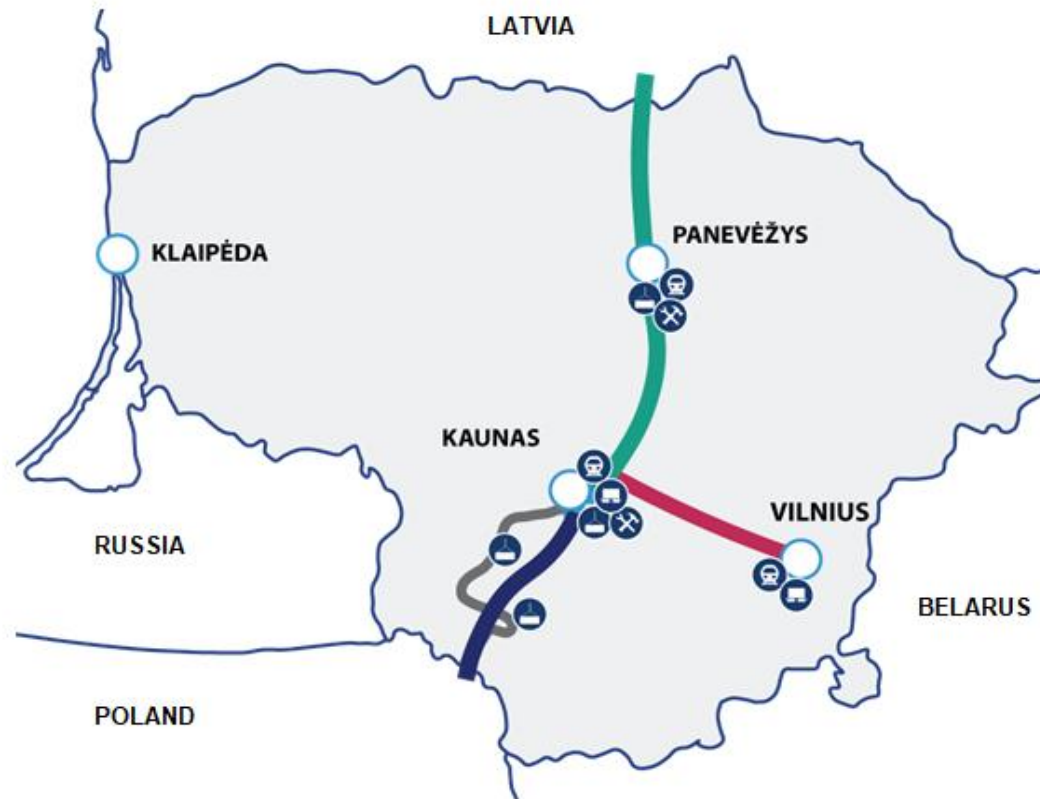
3 transport hubs/nodes



3 international passenger stations



2 intermodal terminals



2 international airports stations



2 infrastructure maintenance facilities



15 regional stations and 2 border stations



4 railway sections

Major milestones



2024

Prepare for construction in all sections

2028

Starting pilots on international sections

2030

Completion of the entire project implementation



Achievements



- Additional financing of € 127 mln. Acquired.
- Final phase of spatial planning started in all three sections.
- Significant progress on section Kaunas – LT/LV border: construction of railway infrastructure launched, new construction contracts signed, construction procurements announced, planning of Panevėžys Node and regional stations in progress.
- Design procurements for point type objects announced.
- Development of infrastructure management model continues.

Priorities for 2023



- Construction in direction towards LT/LV border.
- Spatial planning of both Rail Baltica mainline as well as point type objects.
- Coordination and approval of spatial plans.
- Start of land acquisition for public needs projects
- Start of point type objects design works.

Project financing LT part



EU grant 85 %

+



State budget 15 %

Construction strategy

Kaunas – Lithuanian/Latvian state border



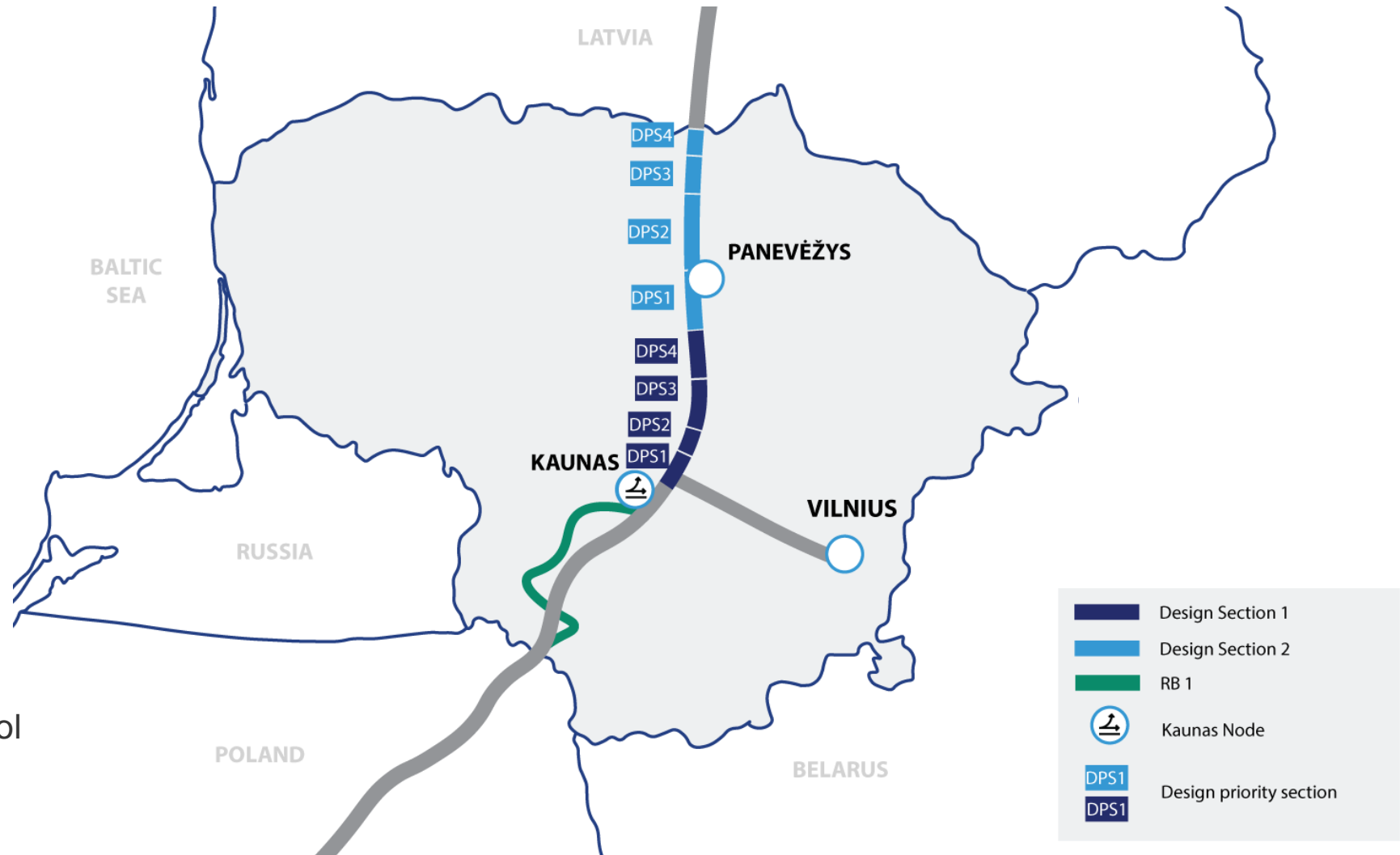
Horizontal split

Construction works are divided into **design priority sections** (DPS) geographically

Vertical partitioning

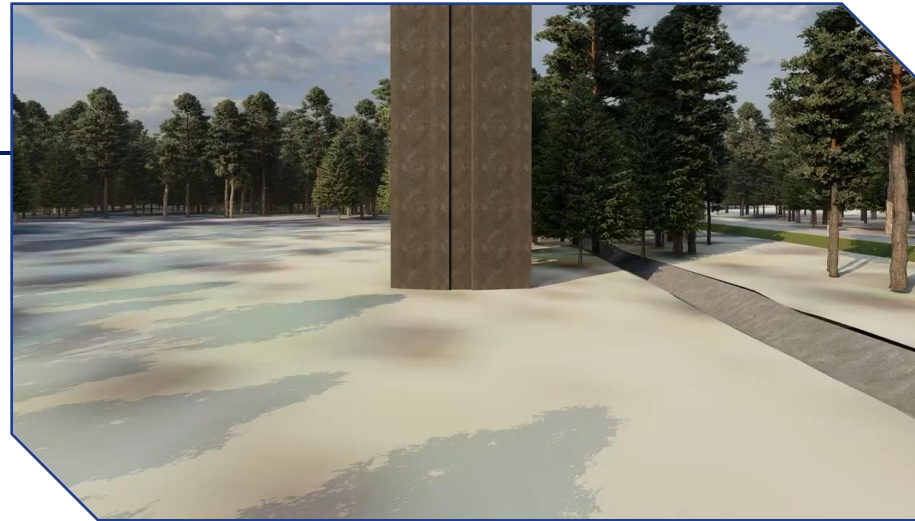
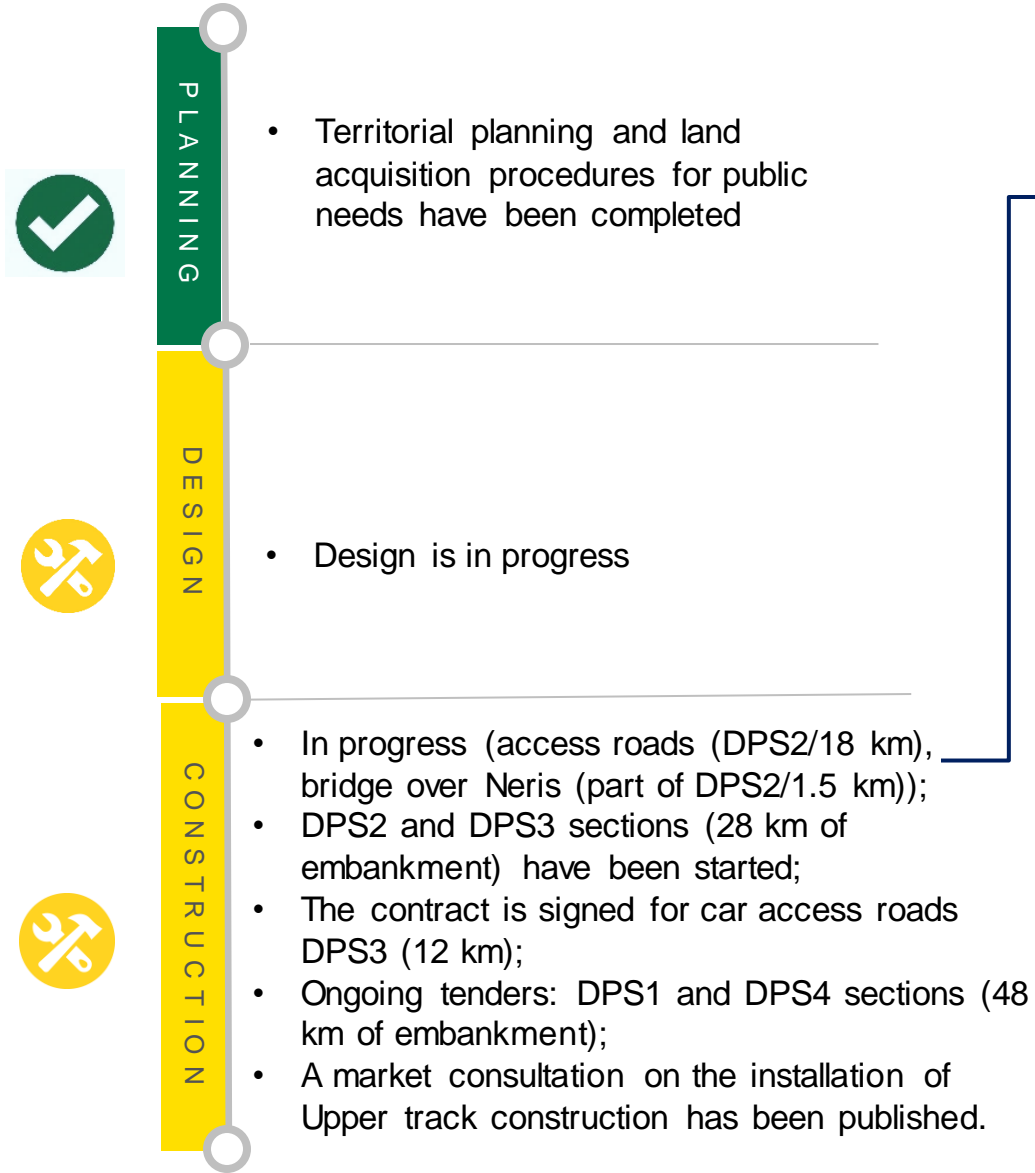
Scope of construction works:

- Embankment and related structures;
- Upper road structure;
- Electrification and traffic control system.



Implementation progress

Kaunas – Lithuanian/Latvian state border



Implementation progress

Kaunas – Lithuanian/Polish border, Kaunas Node, Kaunas – Vilnius



Local Facilities



PLANNING

Infrastructure maintenance facilities in Kaunas and Panevėžys

The procurement of services for the preparation and implementation of land acquisition projects for public needs is announced (contract – 2023 Q2).



DESIGN

- Kaunas – Vilnius regional connections and regional station infrastructure;
- Infrastructure maintenance facilities in Kaunas and Panevėžys;
- Kaunas railway station;
- Vilnius railway node.

CONSTRUCTION

Kaunas-LV regional stations: contract in 2026.

Infrastructure maintenance facilities: contract in 2025.

Panevėžys node: contract in 2026.



Ongoing design procurements



Title	Announced	Submission Date	Link to procurement
Design of infrastructure maintenance facilities in Kaunas	15-01-2023	04-04-2023	http://bit.ly/3YEha8k
Design of infrastructure maintenance facilities in Panevėžys	15-01-2023	04-04-2023	http://bit.ly/3lwrwg2
Kaunas railway station design and project execution supervision services	25-01-2023	12-04-2023	http://bit.ly/3xhcucz
Infrastructure design of regional connections and regional stations on the Kaunas (Kaunas railway node) – Vilnius (Vilnius railway node) section of the railway line	26-01-2023	17-04-2023	http://bit.ly/3RTsZoE
Design of the Vilnius railway node	10-02-2023	07-04-2023	http://bit.ly/3K4iahD

Ongoing Contract Procurement (DPS)



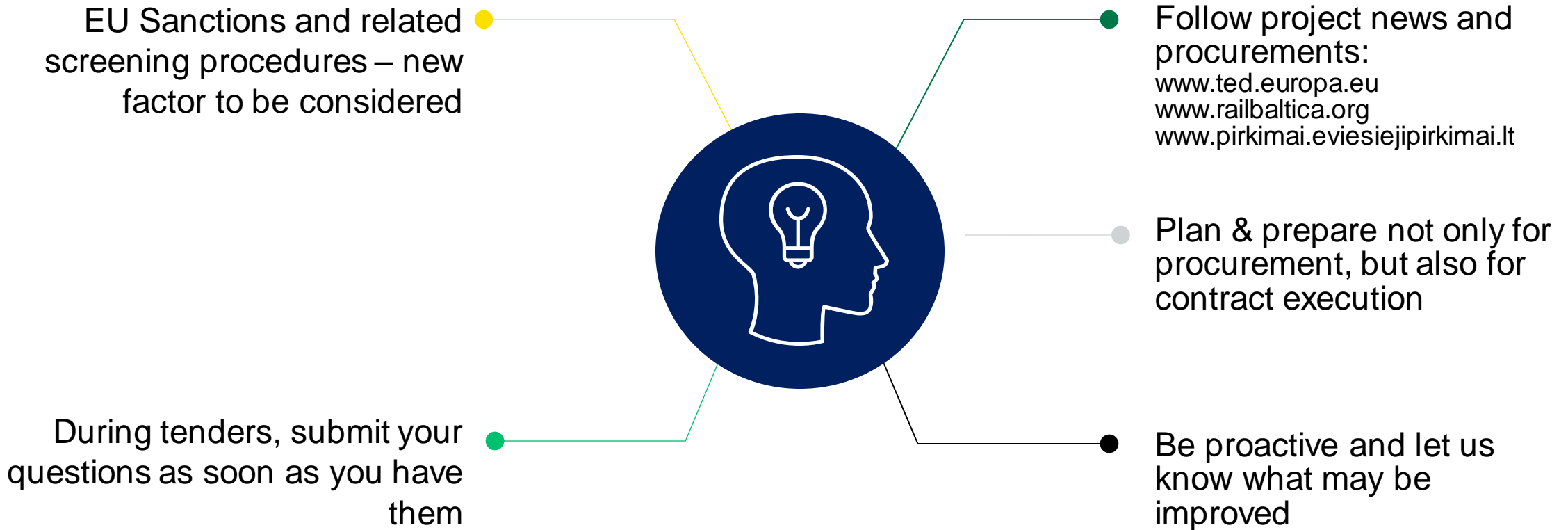
Title	Announced	Submission Date	Link
Contract works of the “Rail Baltica” railway line Kaunas-Panevėžys-LT/LV (stage I): Installation of a new railway embankment for the dual carriageway, construction of engineering structures and roads	06-10-2022	07-10-2027	http://bit.ly/3TVa121
No. 19299 Procurement of laboratory testing and research services related to the contract works of the Kaunas-Ramygala railway line section of the Rail Baltica project	05-02-2022	08-02-2027	http://bit.ly/3nz7crd
No. 15313 Procurement of contract works for the Rail Baltica railway line section Kaunas-Panevėžys-LT/LV contract works (stage I): construction of roads”	14-08-2020	17-08-2025	http://bit.ly/42Nq6ed
No. 14938 Contract works of the “Rail Baltica” railway line Kaunas-Panevėžys-LT/LV (stage I) “Installation of a new railway embankment for the dual carriageway, construction of engineering structures”	24-06-2022	24-06-2025	http://bit.ly/42ODRcA
No. 15260 Contract works of the “Rail Baltica” railway line Kaunas-Panevėžys-LT/LV (stage I): Installation of the upper road structure (section 0+500 km to 58+400 km)	24-06-2022	24-06-2025	http://bit.ly/3KeMxAL

Procurement plans



Title	Announcement date	Contract signing date	Additional information
Land acquisition for public needs			
Land acquisition for construction of 1435 mm gauge railway line Kaunas – Vilnius	April 2023	September 2023	Market consultation is finished
Land acquisition for construction of 1435 mm gauge railway infrastructure maintenance depots			
Land acquisition for construction of 1435 mm gauge railway line PL/LT – Jiesia			
Land acquisition for construction of 1435 mm gauge railway lines at the Kaunas railway junction			
Design			
Design of 1435 mm gauge railway infrastructure in Panevėžys Node	November 2023	June 2024	
Design of regional stations Kaunas – LT/LV	June 2023	June 2024	
Contract			
Procurement of qualification assessment system for construction maintenance and FIDIC engineer services	March 2023	June 2023	
DPS1 Kaunas – Switzerland 0.50 – 19.4 km (18.9 km) embankment and structures: construction maintenance and FIDIC engineer services	July 2023	October 2023	
DPS4 Šėta – Ramygala 48.8 - 65.9 km (17.1 km) embankment and structures, connecting roads: construction maintenance and FIDIC engineer services			
Kaunas – Šėta upper road construction installation	August 2023	August 2024	Market consultation is in progress
Šėta – Panevėžys upper road construction installation	February 2024	December 2024	
Kaunas - Palemonas, Jiesia - Rokai assessment of 25 t axial load	April 2023	May 2023	

Our expectations and advice





Let's cooperate!