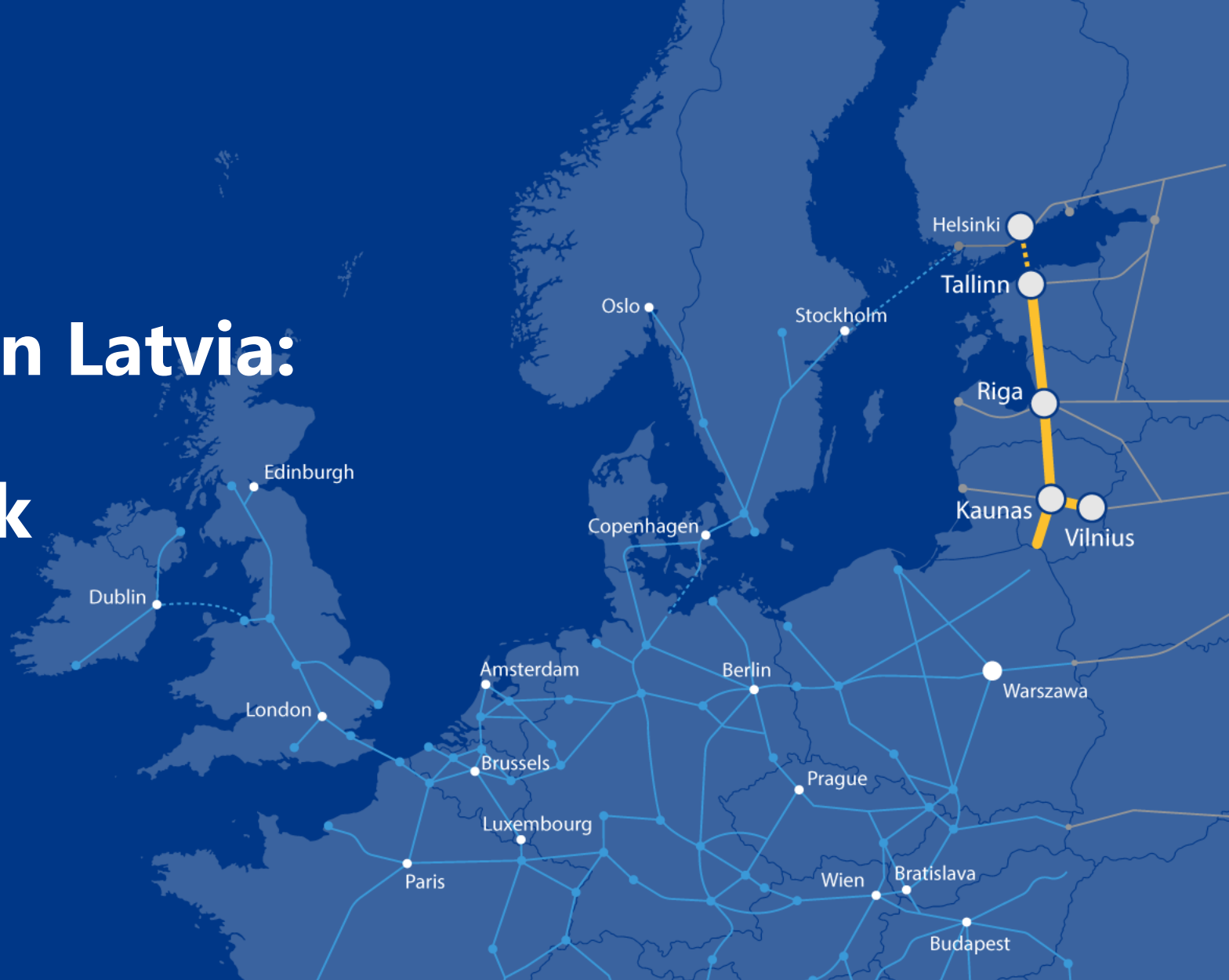




# Implementation in Latvia: Status & Outlook



Co-financed by the Connecting Europe  
Facility of the European Union



EIROPAS  
DZELZCEĻĀ  
LĪNIJAS



## EDZL

- **8-year journey from beginnings to leading implementer;**
- **Developed center of skills, talent and knowledge;**
- **9 major design and works contracts signed, value above 700M EUR;**
- **Project Owner of the largest ongoing tender in Europe;**
- **Tangible and timely delivery of results mastering future Infrastructure Management role**



Construction works in Rail Baltica Riga Central Hub railway section ongoing



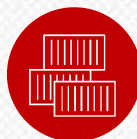
Construction works in Rail Baltica Riga Airport Hub railway section ongoing



On-going tenders for Construction and Supervision of mainline section of around 200km



Design of 17 regional stations about to commence



Ongoing design for Iecava and Skulte IMF's



Ongoing design for Salaspils Intermodal Freight terminal



Land and property acquisition ongoing according to the needs of the project

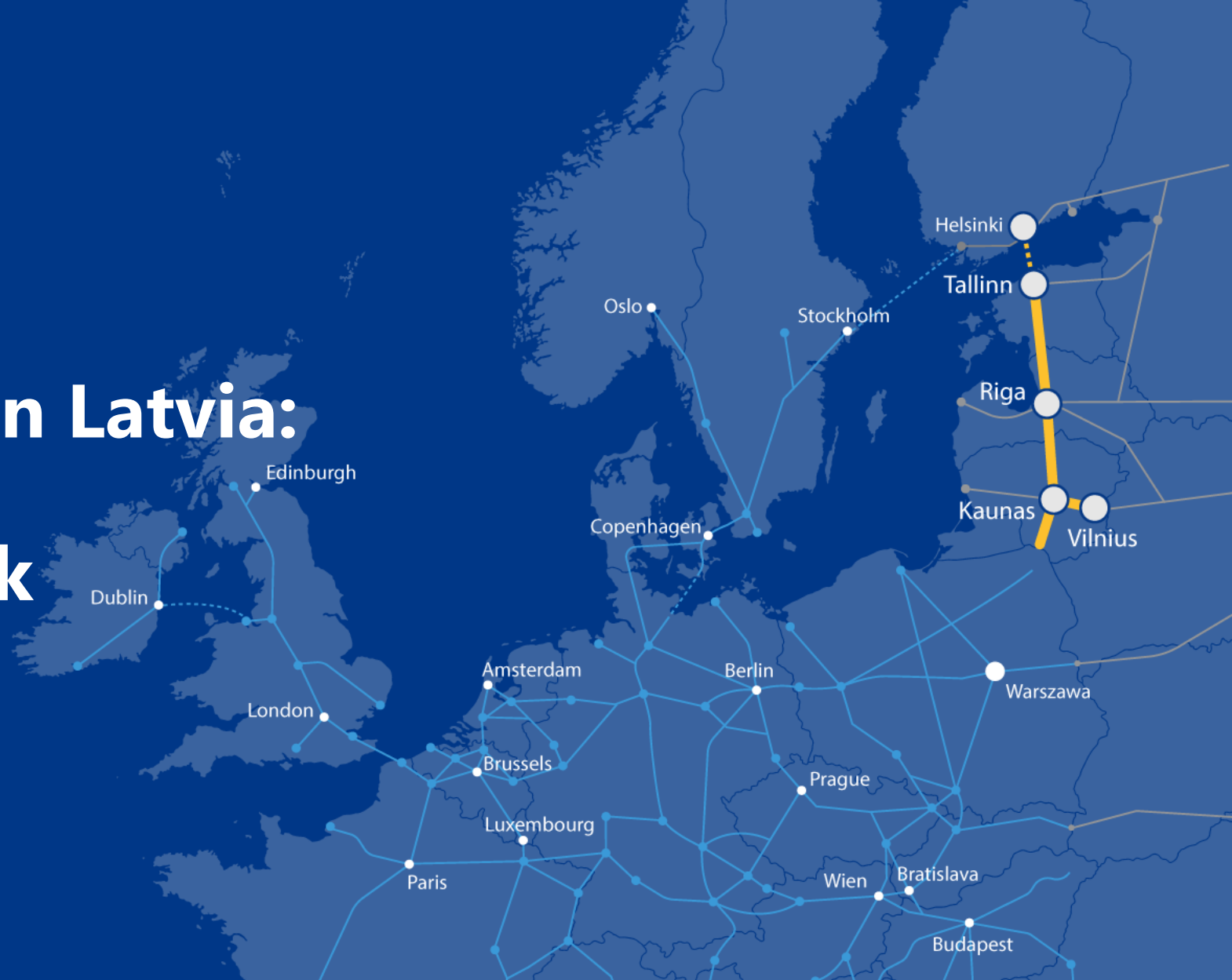


Military mobility included as part of the project





# Implementation in Latvia: Status & Outlook



Co-financed by the Connecting Europe  
Facility of the European Union

