

# Maximizing Value from Regional and International Rail Projects

**RAMBOLL**

Bright ideas.  
Sustainable change.





## Benefits of rail infrastructure in urban areas...







...and fostering the potential of suburban and rural areas





Increases opportunities & productivity

Reduce road congestion

Boosts economic development and growth

Environmental sustainability

Boosts productivity

Reduce negative externalities

Regional and international connectivity

Job creation

Improved mobility

Increases access



# Economic, social and environmental benefits of rail megaprojects







How to enable value maximization potential in railway projects?



A photograph of a busy city square at sunset. In the foreground, several people are walking across the square. A woman with long blonde hair and sunglasses is walking towards the right. A man with a green backpack and a blue beanie is walking towards the left. In the background, there are modern buildings with large windows and a red brick building. A large, curved, metallic structure is visible in the middle ground. The sky is a mix of orange and blue, indicating sunset. The overall scene is a vibrant urban environment.

# User-centered: Make it about people

Planning, design, construction, operation and maintenance

Universal accessibility, simplicity & attractiveness



A group of four people (three men and one woman) are standing in front of a large digital display in a meeting room. They are interacting with the display, which shows a project management interface with a calendar, milestones, and a Gantt chart. The room has a modern design with a large screen, speakers, and a small sign that reads "PLEASE NOTE: DO NOT TOUCH THE TOUCH SCREEN".

Policy, legal and regulatory frameworks in place  
Local, regional, National and International-level  
Effective governance and coordination are key



# Designing beyond the transport function

Supports livable spaces and communities

Connects people and goods to market effectively

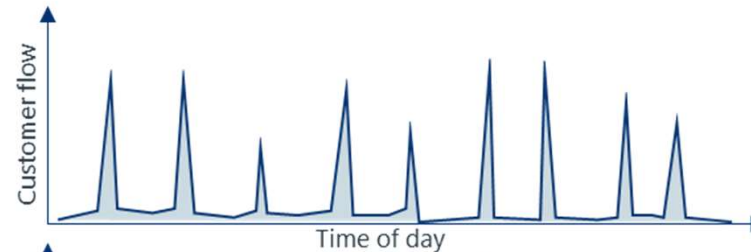




# Rail infrastructure as a tool to leverage value creation



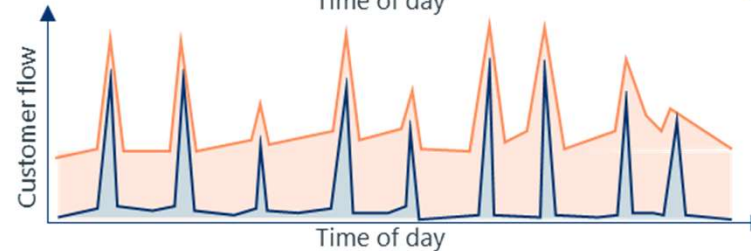
Public transport generates only pulses of activity to the station. No vital environment for services will grow.



+



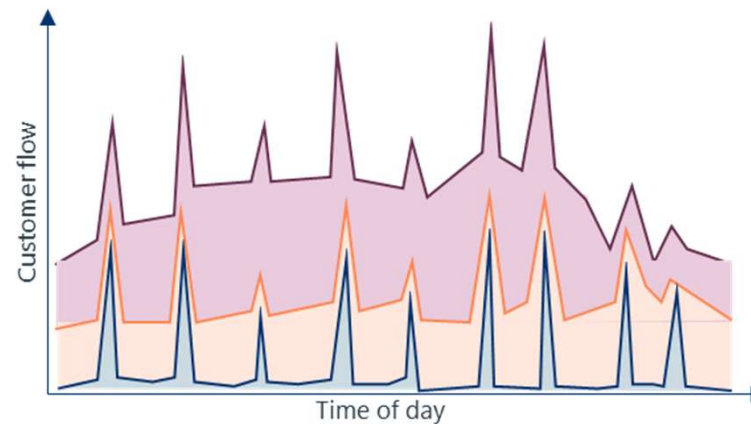
Public transport together with housing and workplaces generate more stable customer flow for the services.



+



+



+



+



+



Potential for new and improved services







Maximizing usage of the infrastructure

Local & HS service

Parcel movement on passenger trains

Night train services

Freight rail off peaks



# Infrastructure sharing to maximize value creation

Support “Dig once” concept

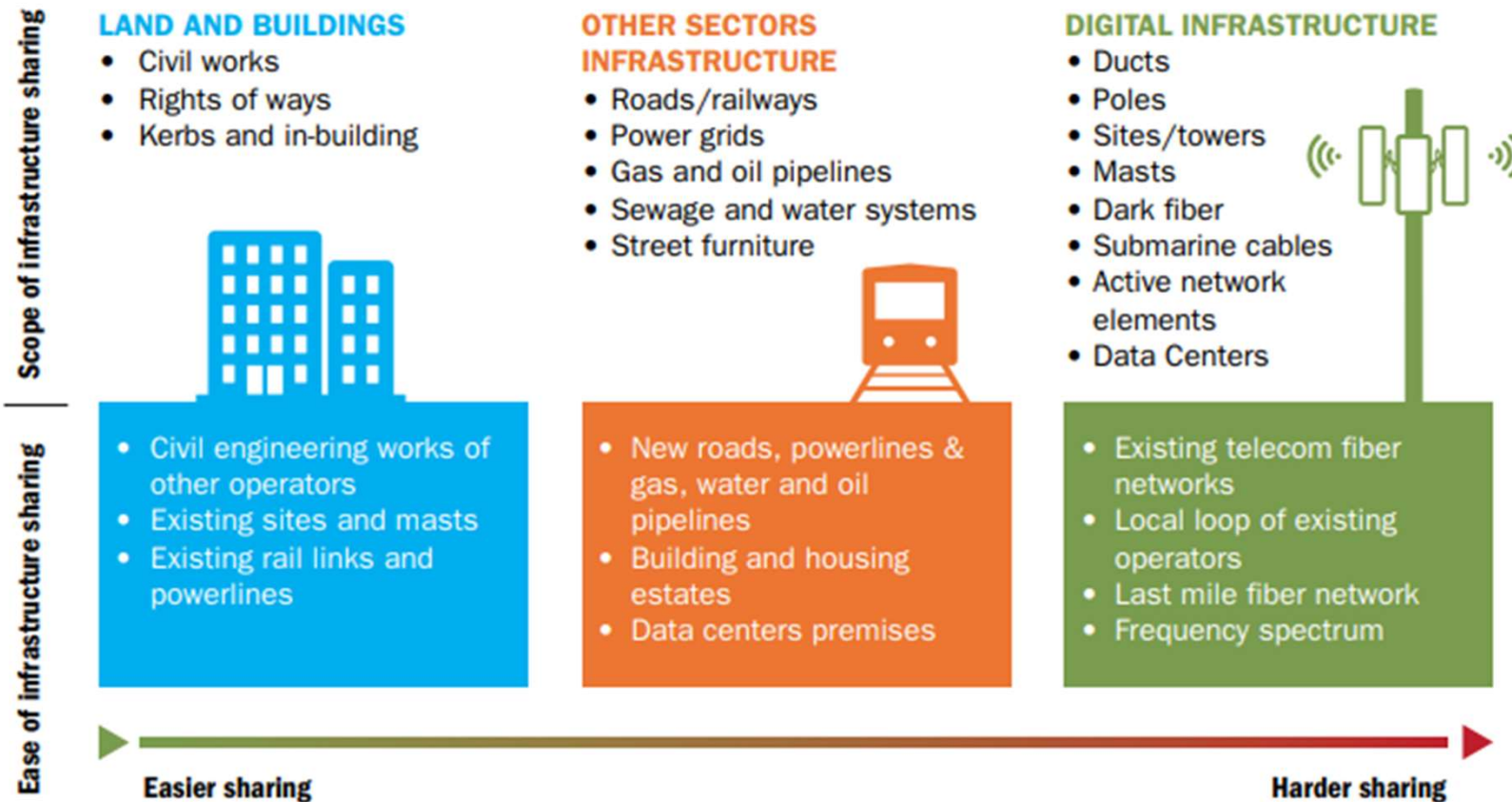


FIGURE 2 Key opportunities for infrastructure sharing

Source: International Finance Corporation WBG, 2020





Rail services are the backbone of the transport system  
backbone of a multimodal, hierarchically-integrated transit system





Rail-airport integration is key for regional development  
& competitiveness

Connectivity and access and support for commercial activity





Design rail infrastructure that makes it easy not to drive  
Leveraging new mobility and boosting public transport use





Maximizing the value of private-sector participation





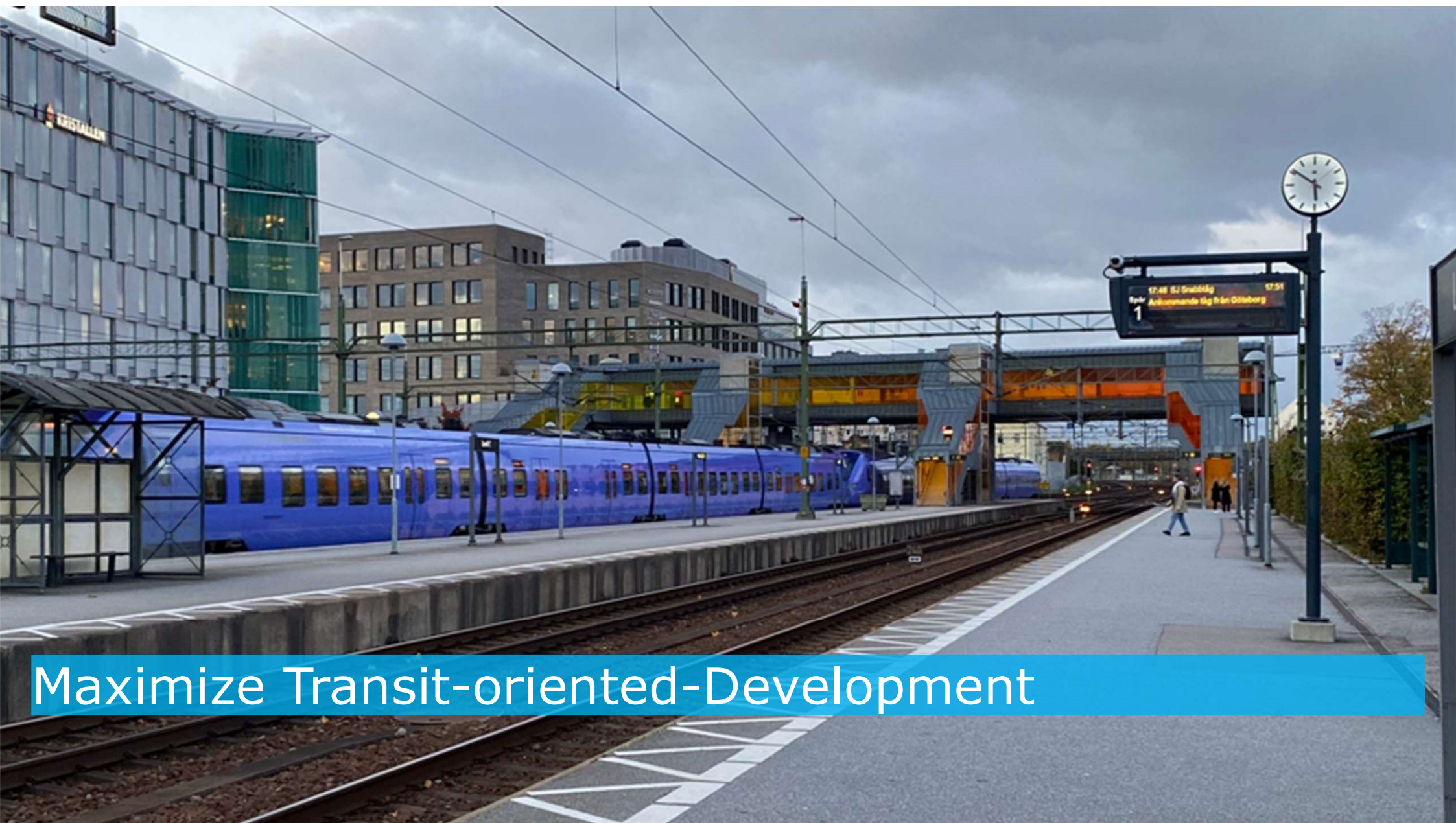
Economic, financial and environmental sustainability





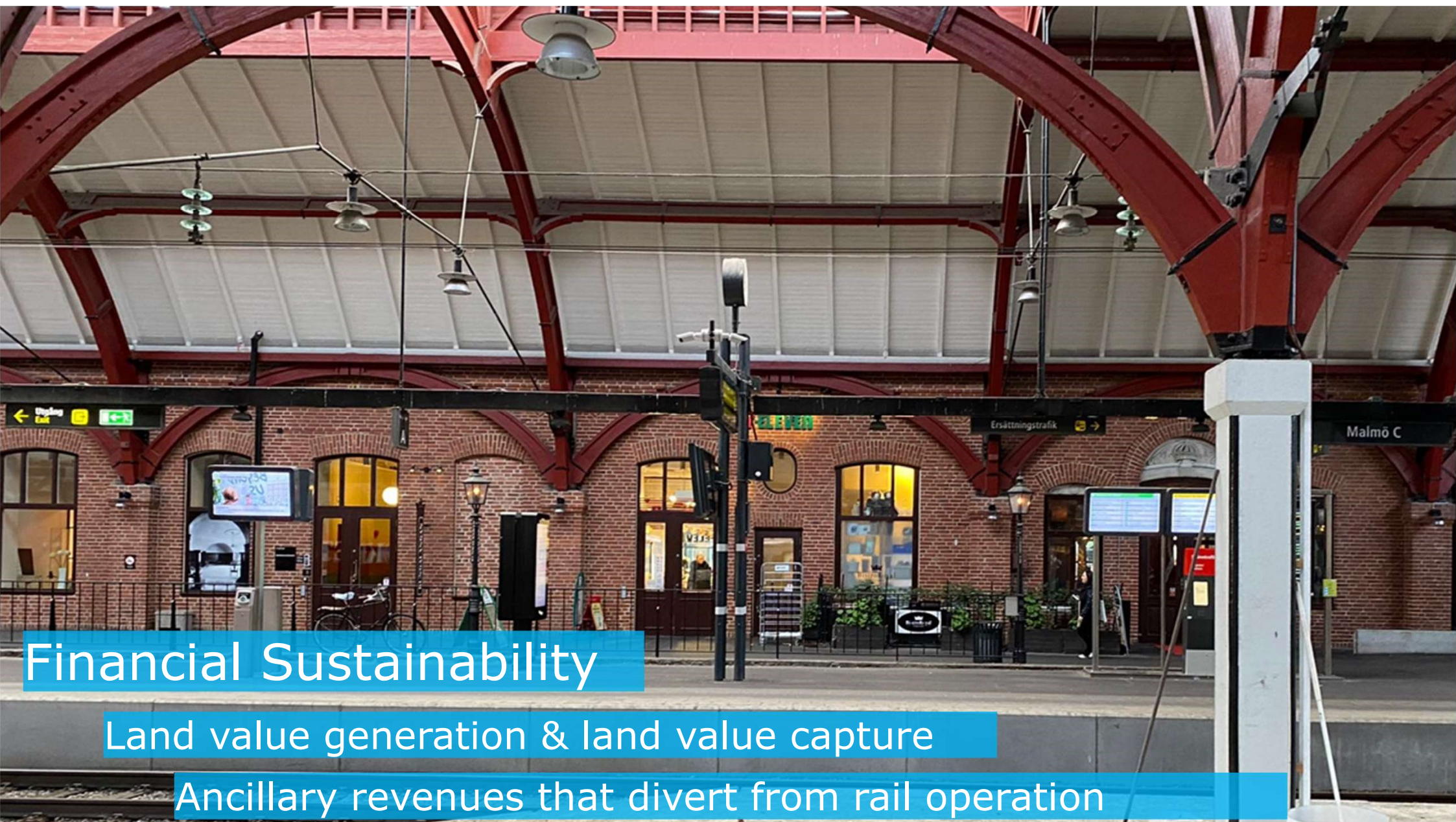
Leveraging new technologies & incentivizing sustainability





Maximize Transit-oriented-Development





## Financial Sustainability

Land value generation & land value capture

Ancillary revenues that divert from rail operation





Non-urban areas are essential, more than ever before





Boost competitiveness and economic potential

Firm and industry clustering

Lower cost of land in non-urban areas

Housing opportunities





Extensive planning and stakeholder engagement

Corridor-wide strategies

Planning land use & transport multimodality





# Successful projects necessitate of strong champions...

...to drive  
coordination efforts and to manage  
both the policy and technical  
aspects of implementing rail  
megaprojects