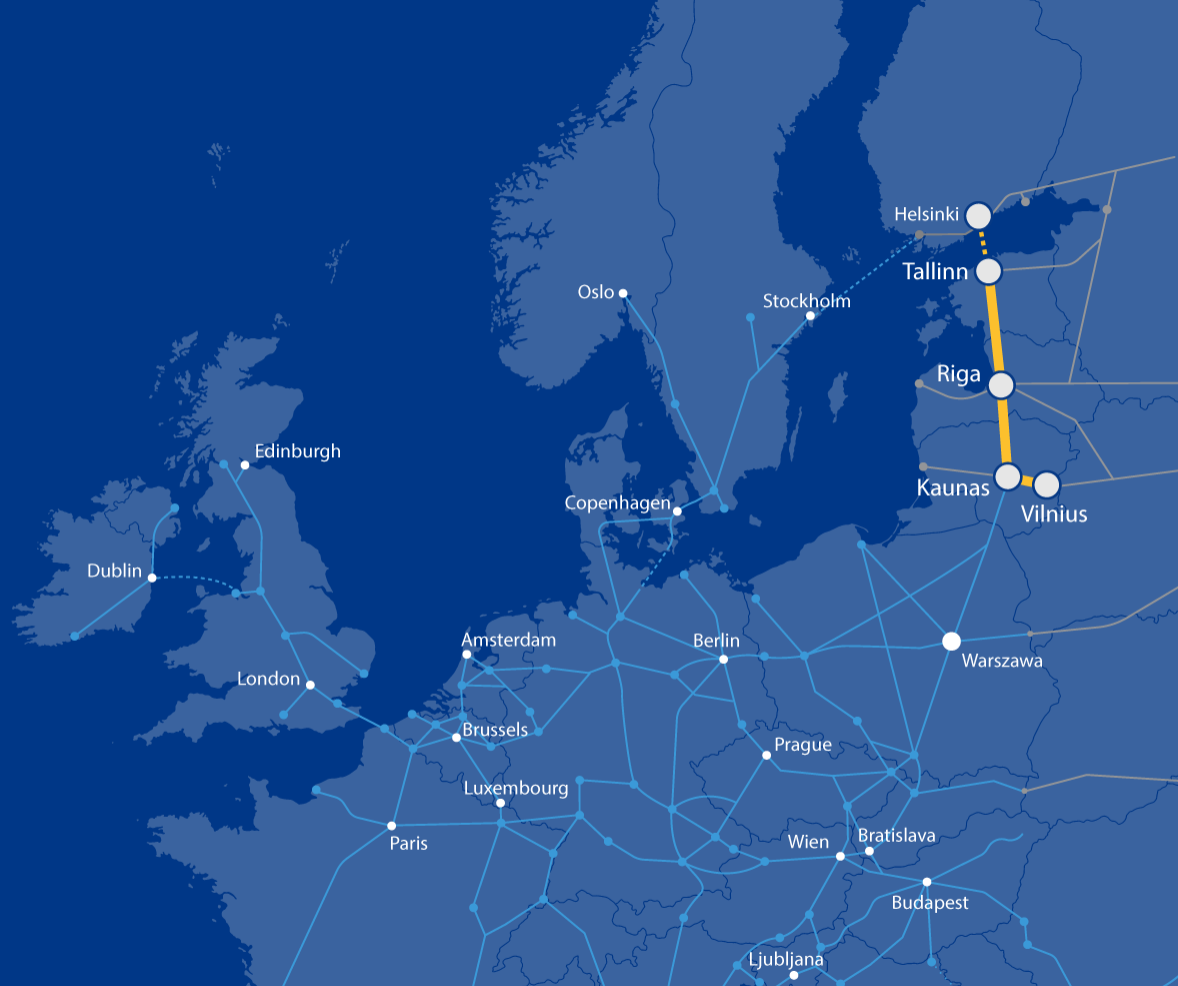




Rail Baltica section  
Berčiūnai – Joniškėlis  
Panevėžys district  
municipality  
**PUBLIC HEARING**



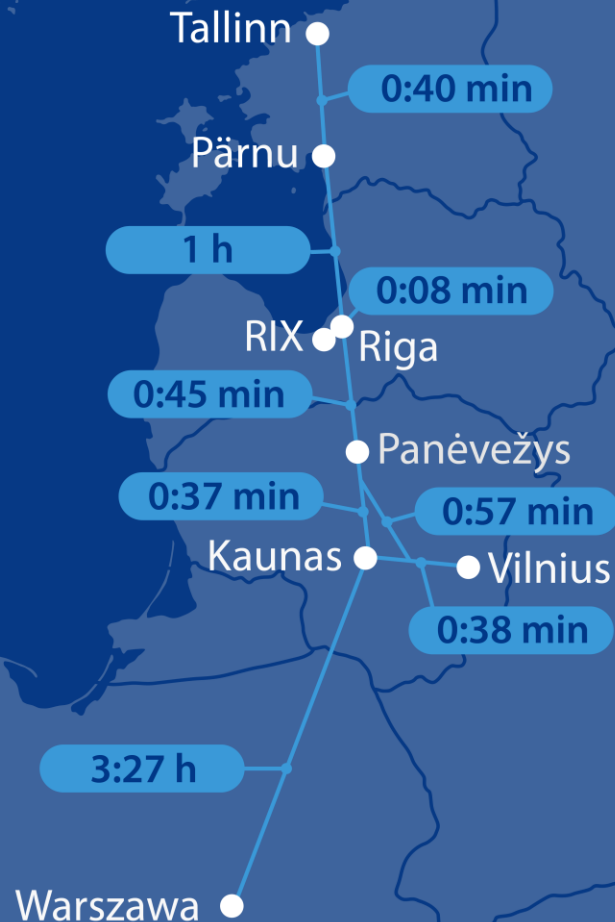
Co-financed by the Connecting Europe  
Facility of the European Union

Jakub Sokoliński, Consultant Representative from IDOM  
Consulting, Engineering and Architecture

2021/06/30

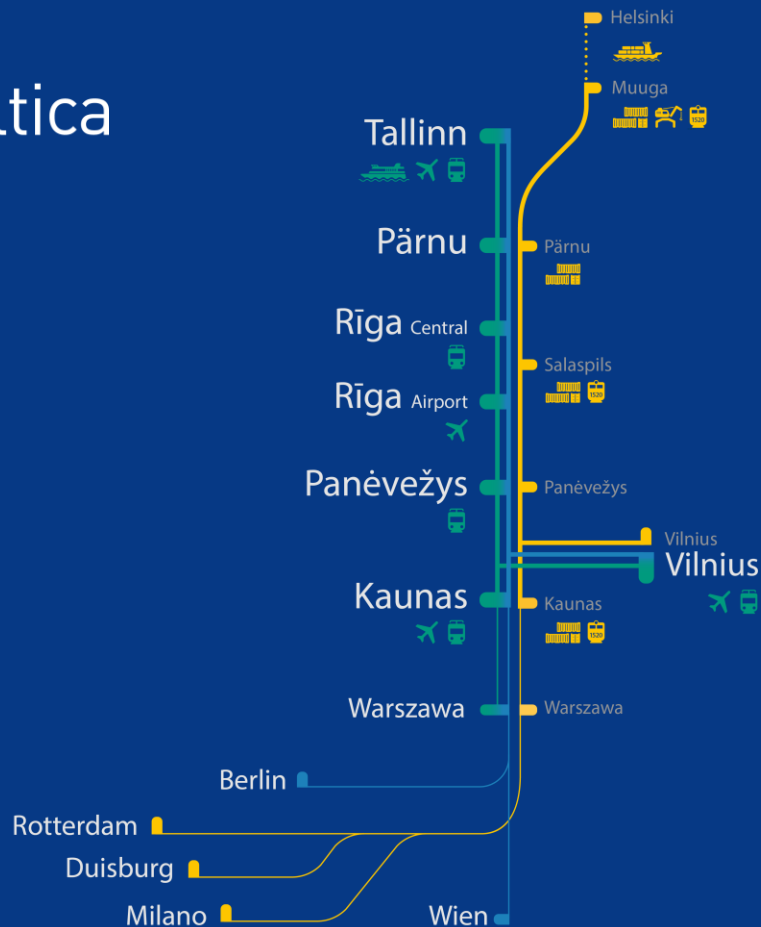


Design and design  
supervision services for  
the construction of the  
new line from  
Ramygala to Lithuanian /  
Latvian state border



# Rail Baltica

- High Speed
- Night Train
- Freight



- ◉ Chairman of the public meeting – Jakub Sokoliński, Consultant Representative from IDOM Consulting, Engineering and Architecture
- ◉ The secretary of the public meeting is Mykolas Dumbrava
- ◉ The customer is the RB Rail AS Lietuvos filialas
- ◉ The builder is the AB „LTG Infra“
- ◉ Proposals from the public concerned could be submitted before and during the public meeting.
- ◉ Participants in the public meeting are registered.
- ◉ The statements of the participants of the public meeting shall be recorded in the minutes.
- ◉ The minutes of the public meeting will be prepared after the meeting in 3 working days.
- ◉ The designer publishes the minutes with annexes in IS Infostatyba in 5 working days .
- ◉ The designer submits the application for approval of the project proposals together with the project proposals, report with annexes, protocol, sound recording, directly to the civil servant of the municipal administration through the IS Infostatyba.
- ◉ Pursuant to Article 36 of the Law on Public Administration of the Republic of Lithuania, a decision made by a civil servant of the municipal administration performing the functions of the chief architect of the municipality may be appealed to the Administrative Disputes Commission or an administrative court in accordance with the law.

- Existing Baltics connection with EU via Poland → difficult, high cost
- Rail Baltica → joint project of three EU Member States – Estonia, Latvia and Lithuania.
- New High Speed Railway Line → fast-conventional double track 1435mm gauge
- Symbolic return of the Baltic States to Europe.
- Rail Baltica to become part of the EU TEN-T North Sea – Baltic Core Network Corridor:  
*linking Europe's largest ports (Rotterdam, Hamburg and Antwerp) through the Netherlands, Belgium, Germany and Poland, with the three Baltic States.*
- Estonia, Latvia and Lithuania full integration into European railway area.



# BERČIŪNAI - JONIŠKELIS SECTION GENERAL DESCRIPTION

- ⦿ This section connects two main population areas, **Joniškėlis**, to the northeast of Pasvalys District Municipality, and **Panevėžys**, in Panevėžys District Municipality.
- ⦿ The **alignment** of this section has been designed within the boundaries of the approved **Special Plan**, running in close proximity to: **Joniškėlis, Jotainiai, Pušalotas, and Panevėžys**.
- ⦿ The stretch intersects several existing transport infrastructure, for which **new grade separated junctions** have been designed, **avoiding level crossings** that represent one of the rail sector's biggest safety concerns.
- ⦿ **Access roads** parallel to the new railway line have been **designed**, **ensuring connectivity** among the adjacent private landplot owners.

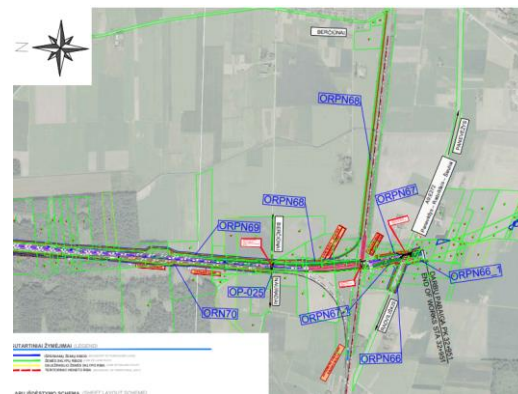
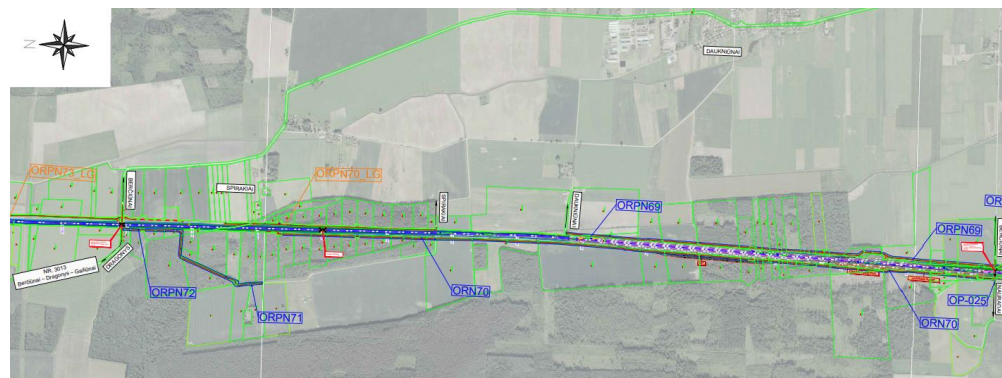
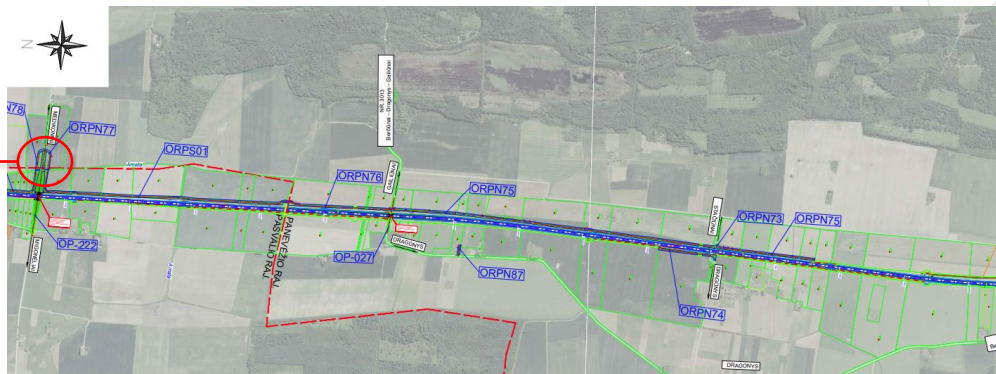
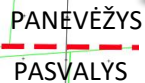
*NOTE: For the purpose of this presentation, we'll be showing only the infrastructure within the boundaries of Panevėžys Municipality.*



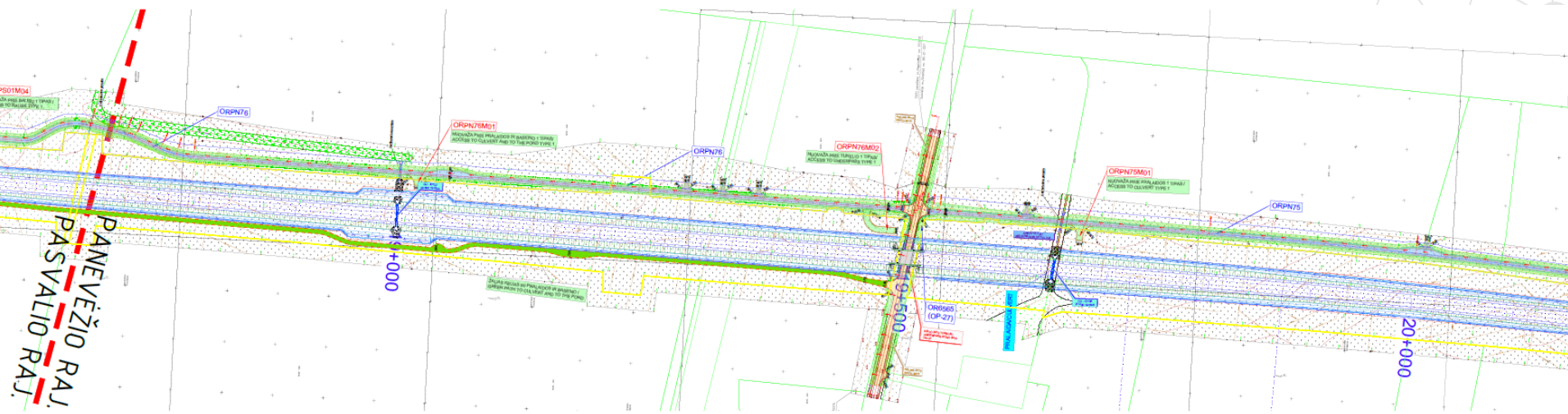


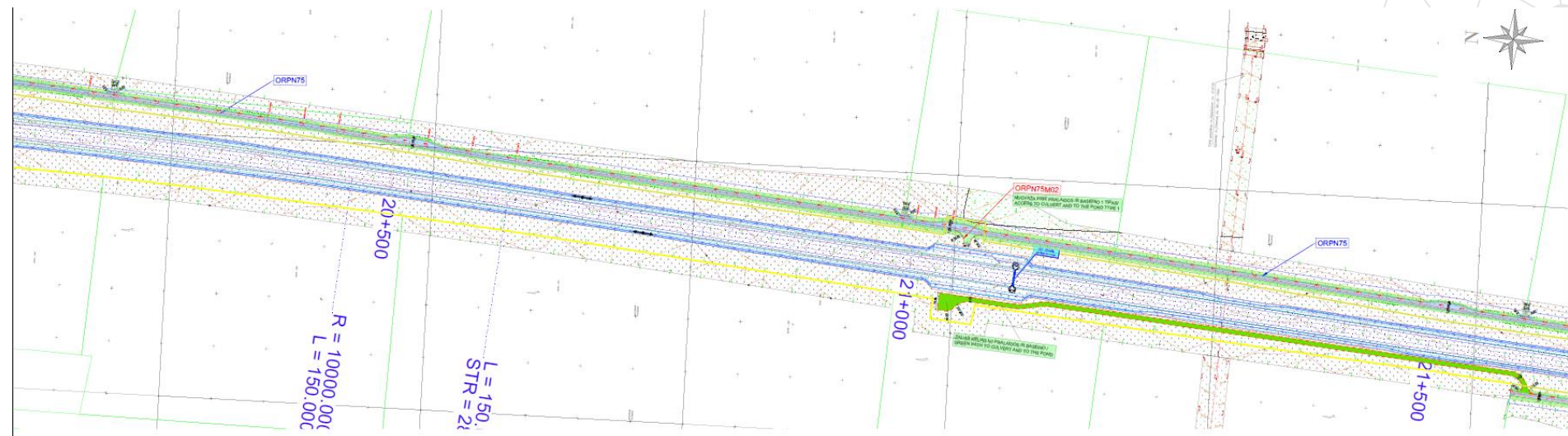
# JONIŠKELIS - PANEVĖŽYS SECTION GENERAL DESCRIPTION



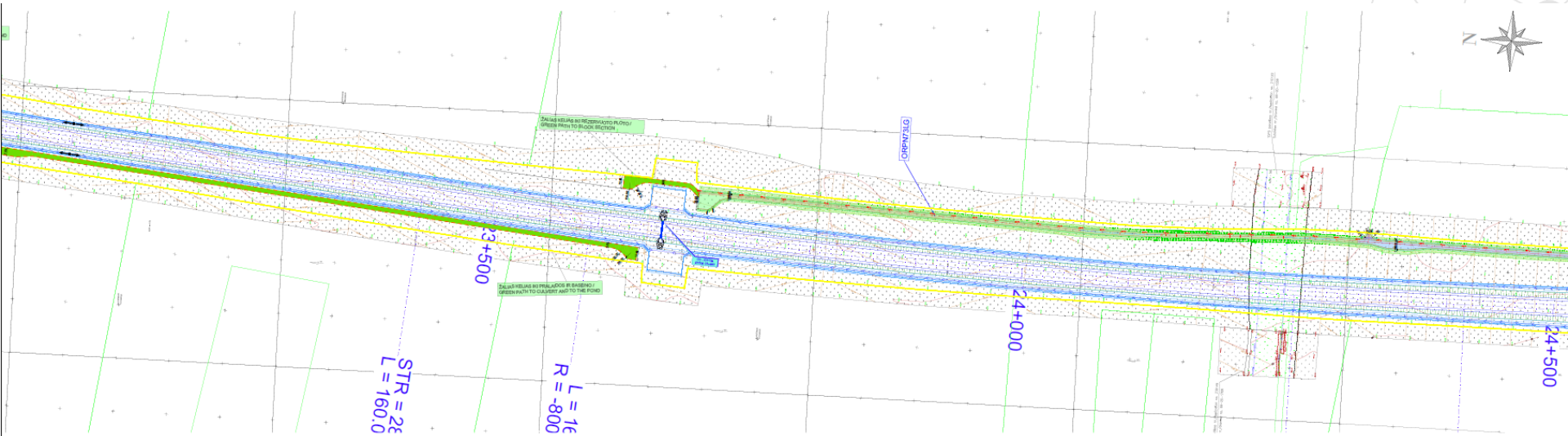


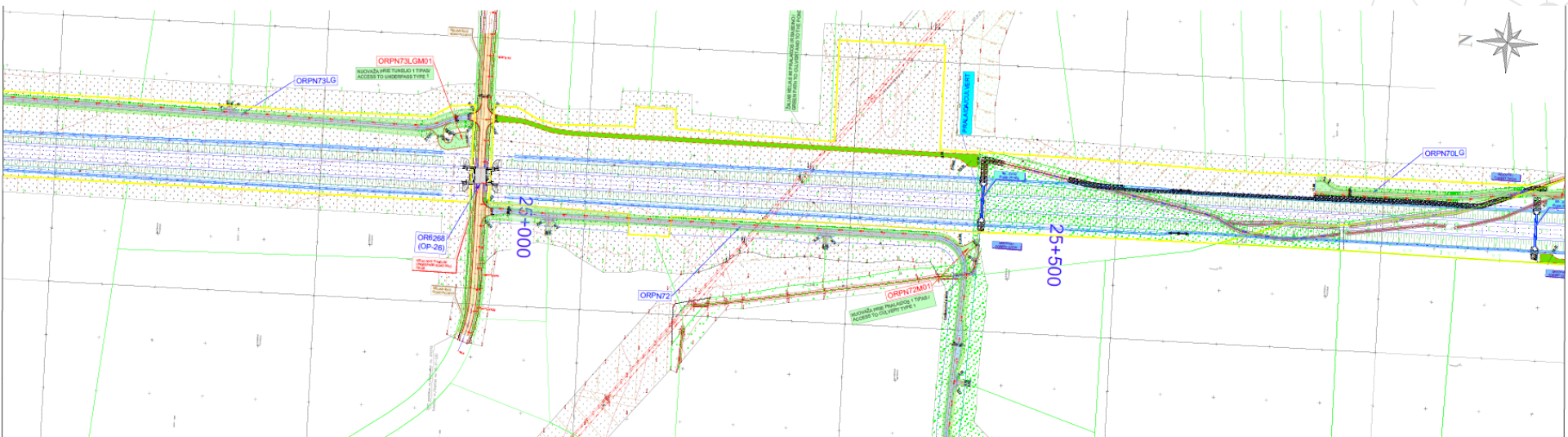




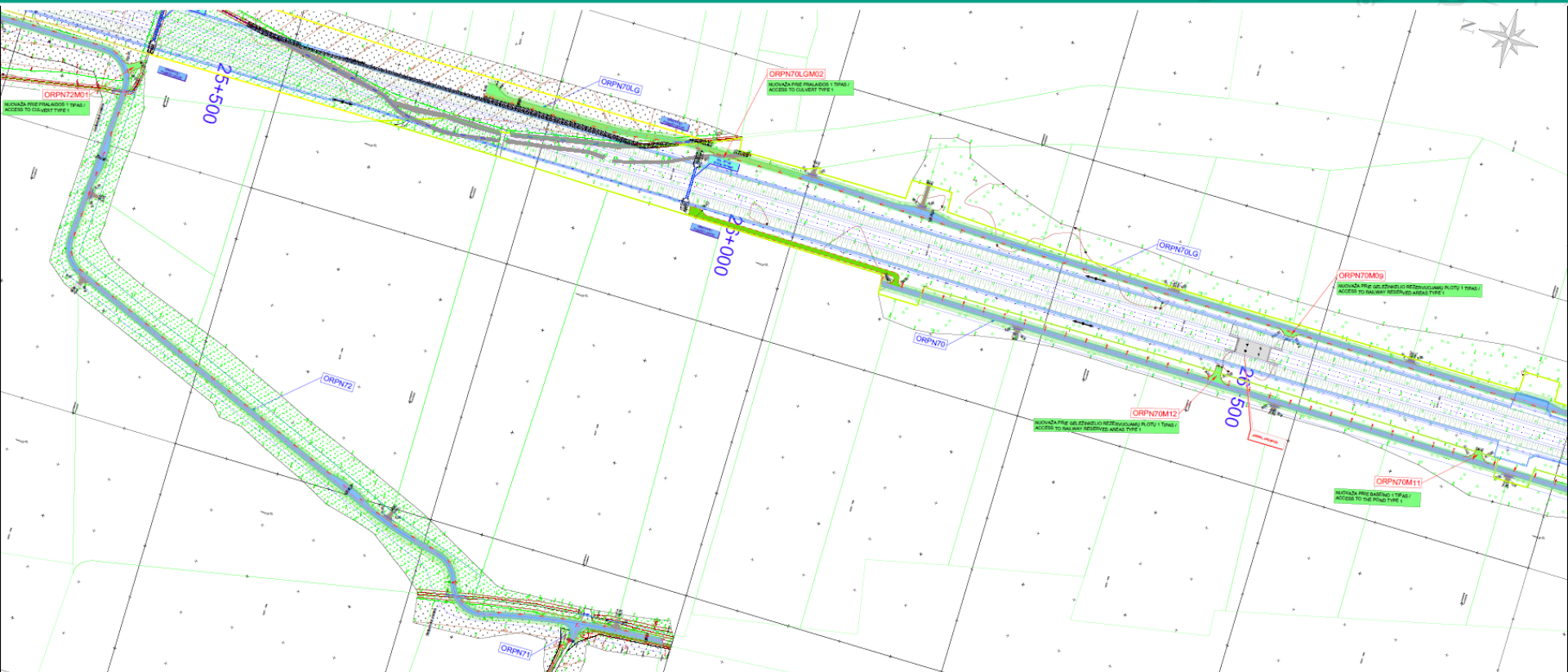


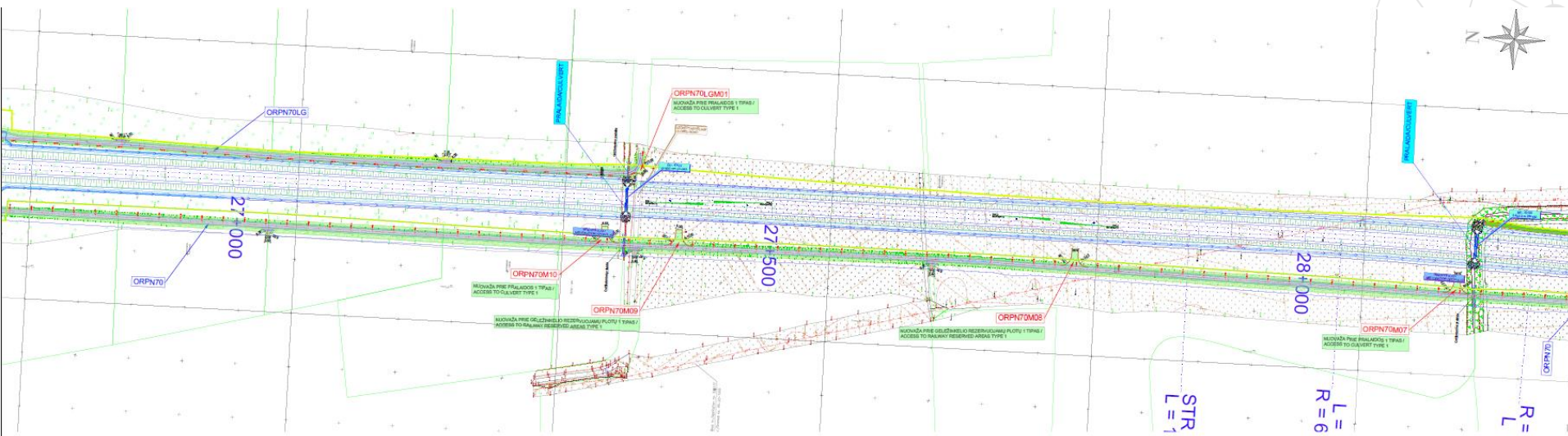


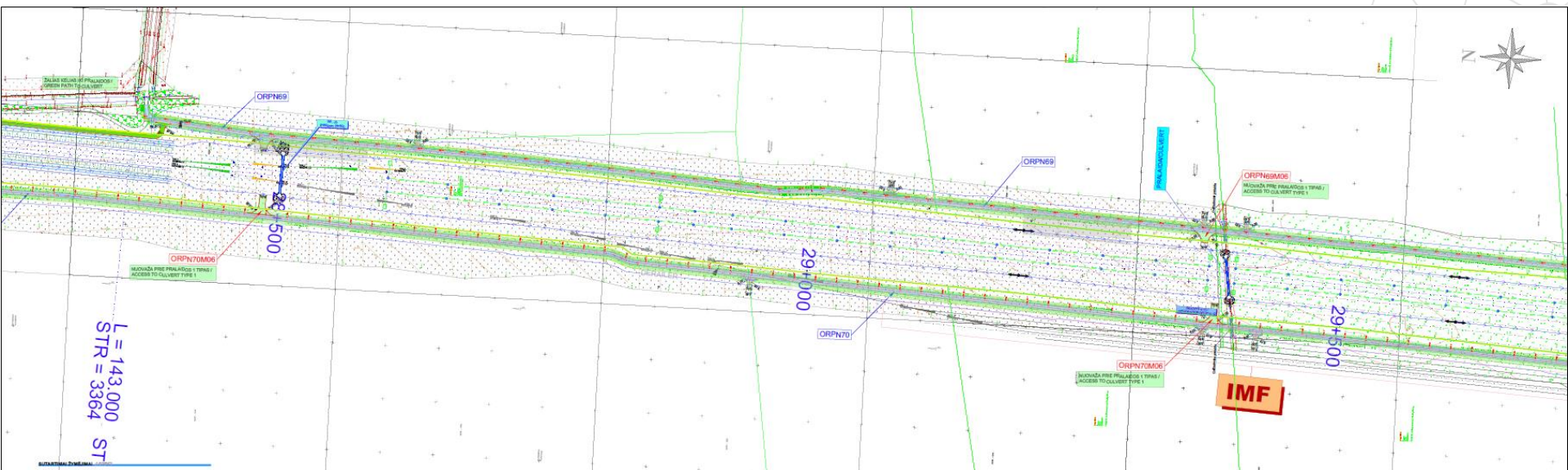


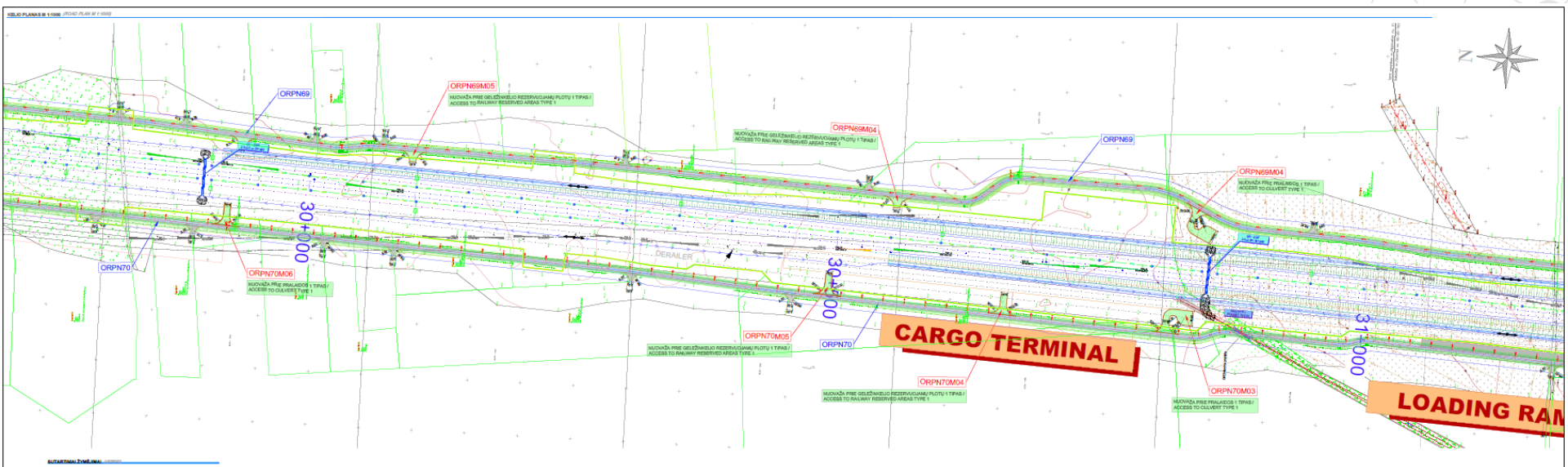




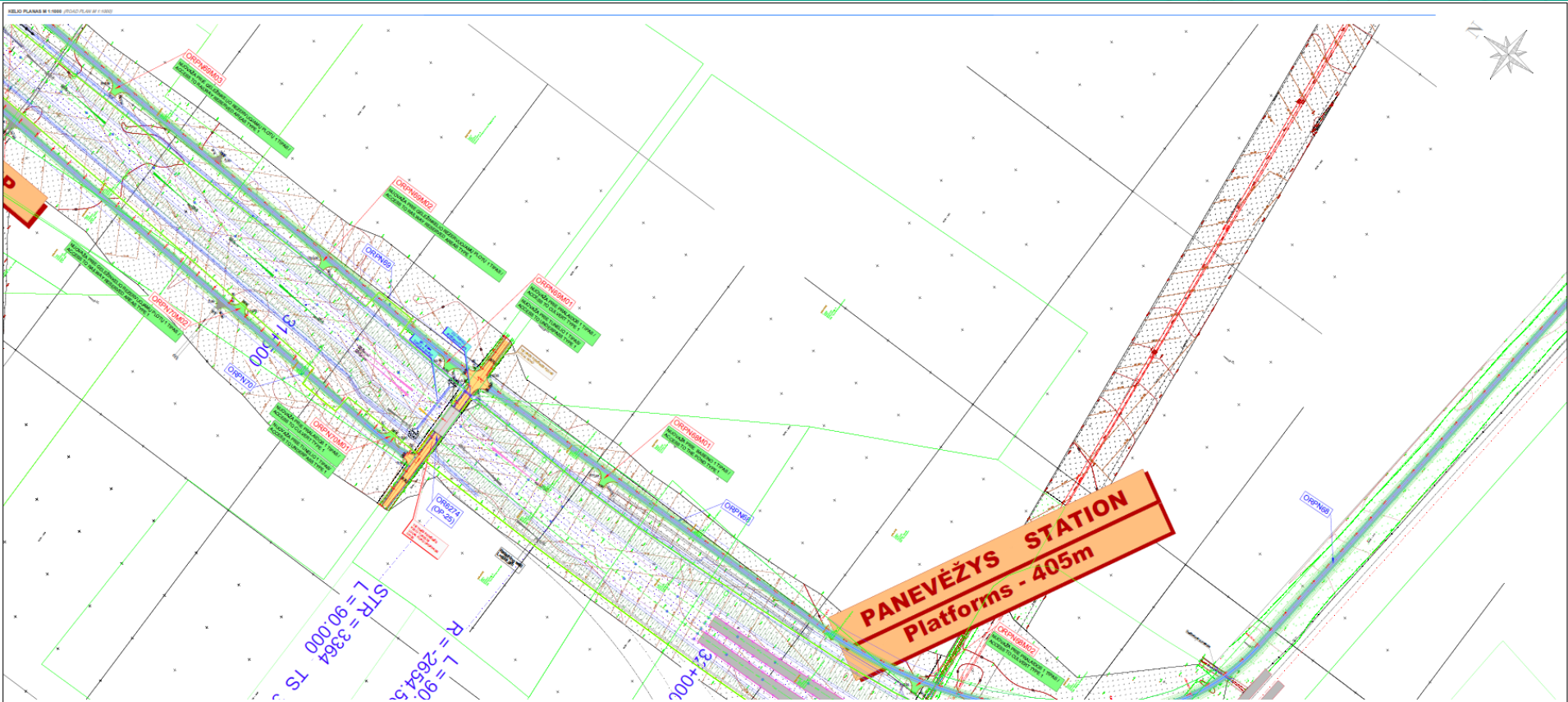




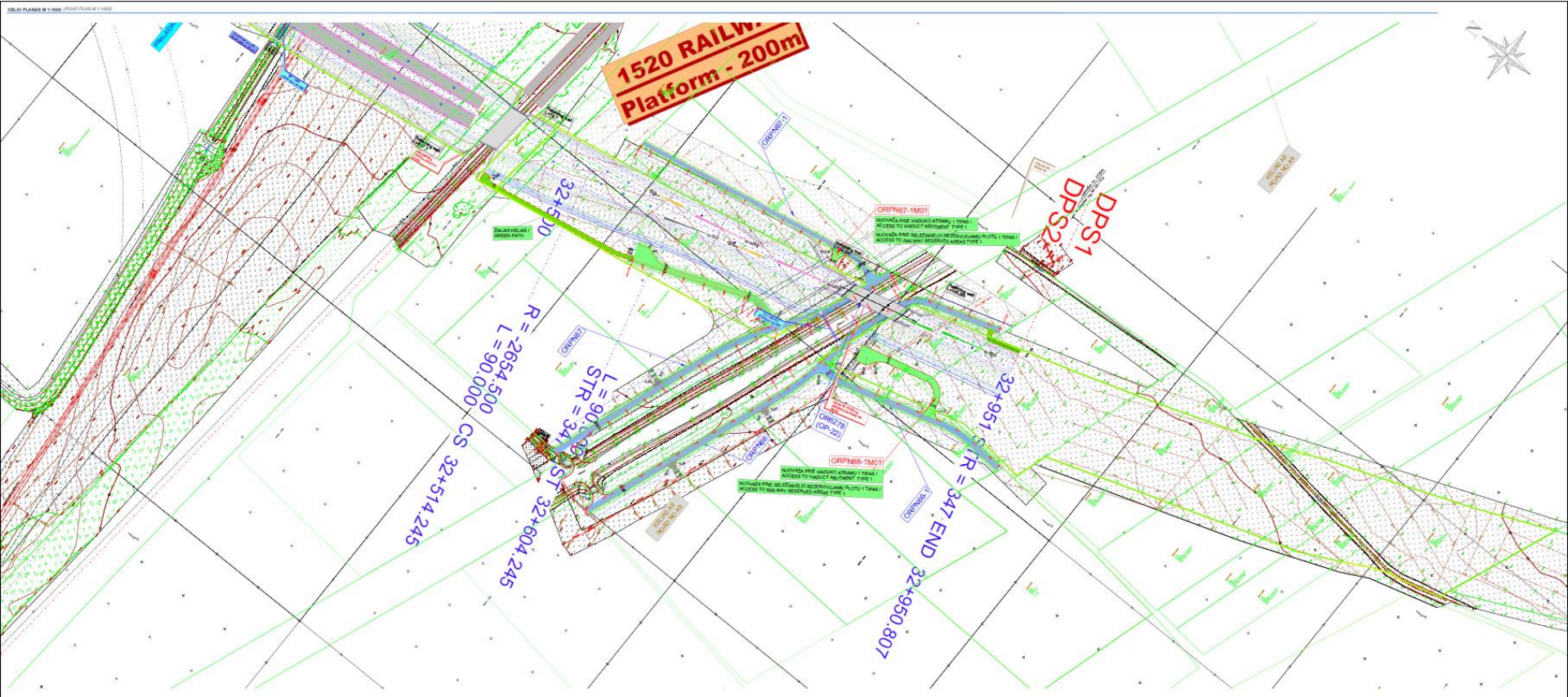


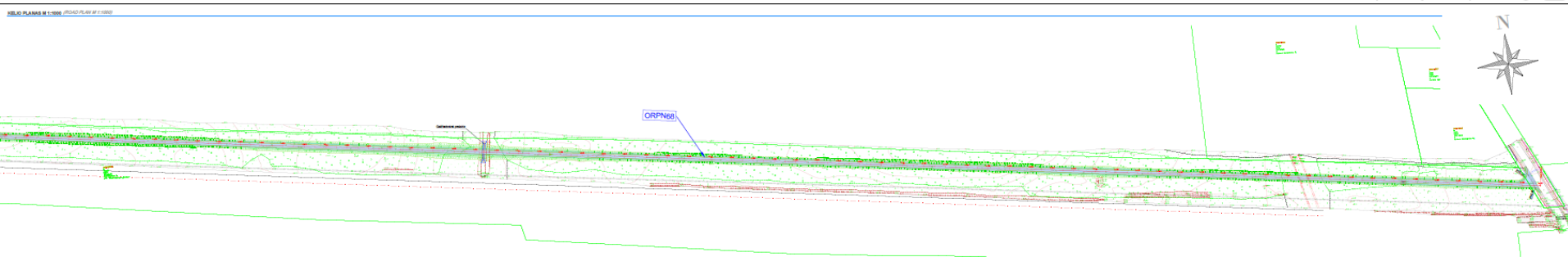




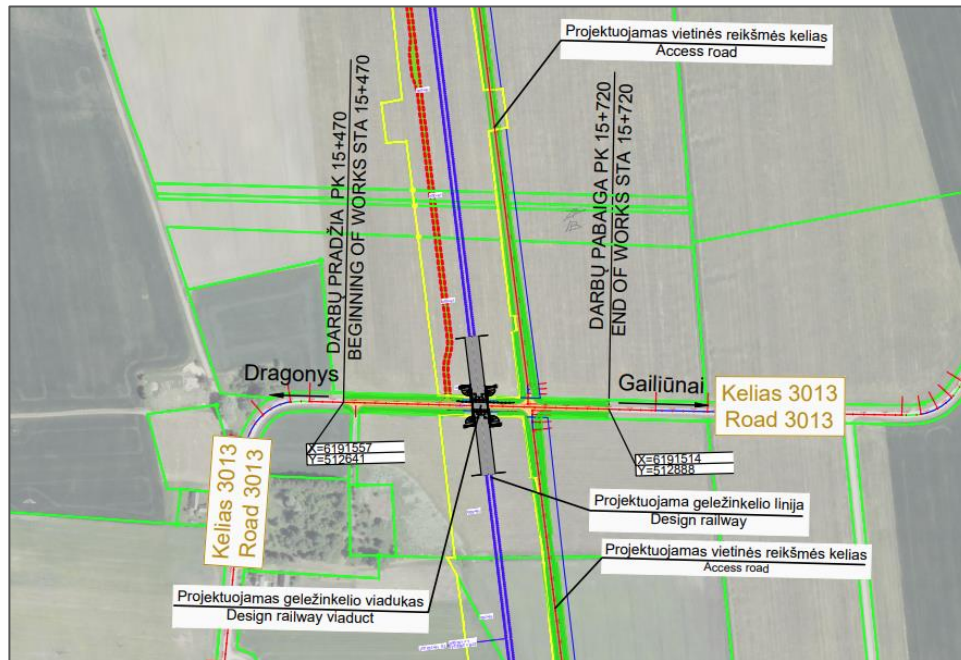






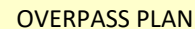
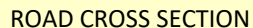


# RAILWAY-ROAD 3013 CROSSING 1 LOCATION PLAN

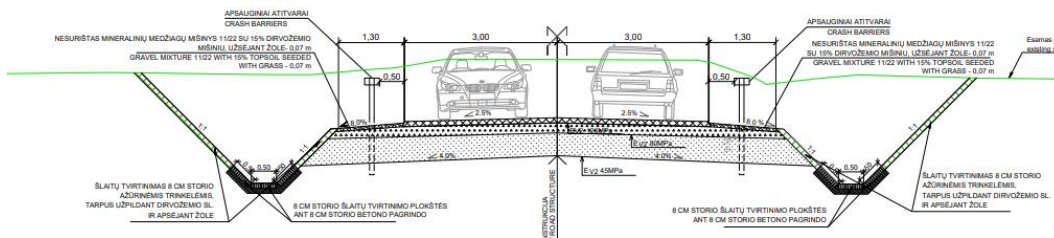
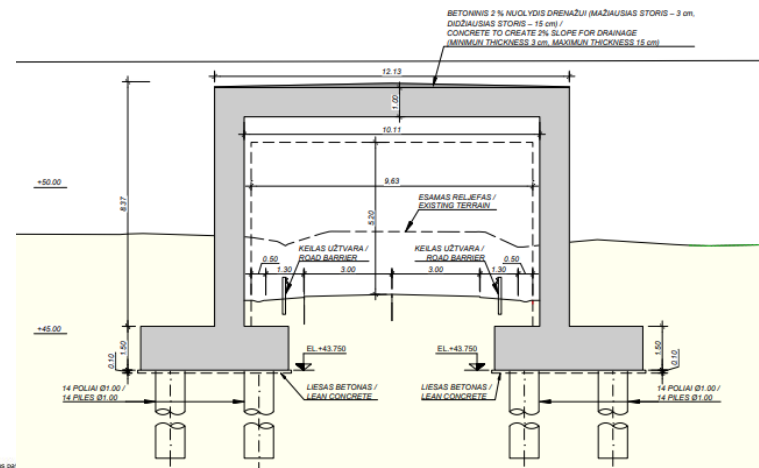
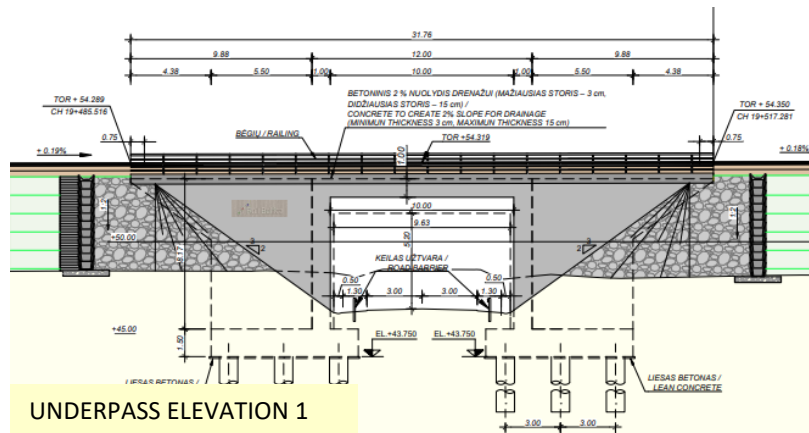


- ☐ The railway line intersects with the category IV regional road no. 3013 Berčiūnai–Dragonys–Gailiūnai from 15,470 km to 7,100 km belongs to Panevezis district municipality.
- ☐ It is planned to install a railway viaduct at the intersection between railway and road.
- ☐ It is planned to install connecting roads on both sides of the railway line to ensure the accessibility of private land plots.





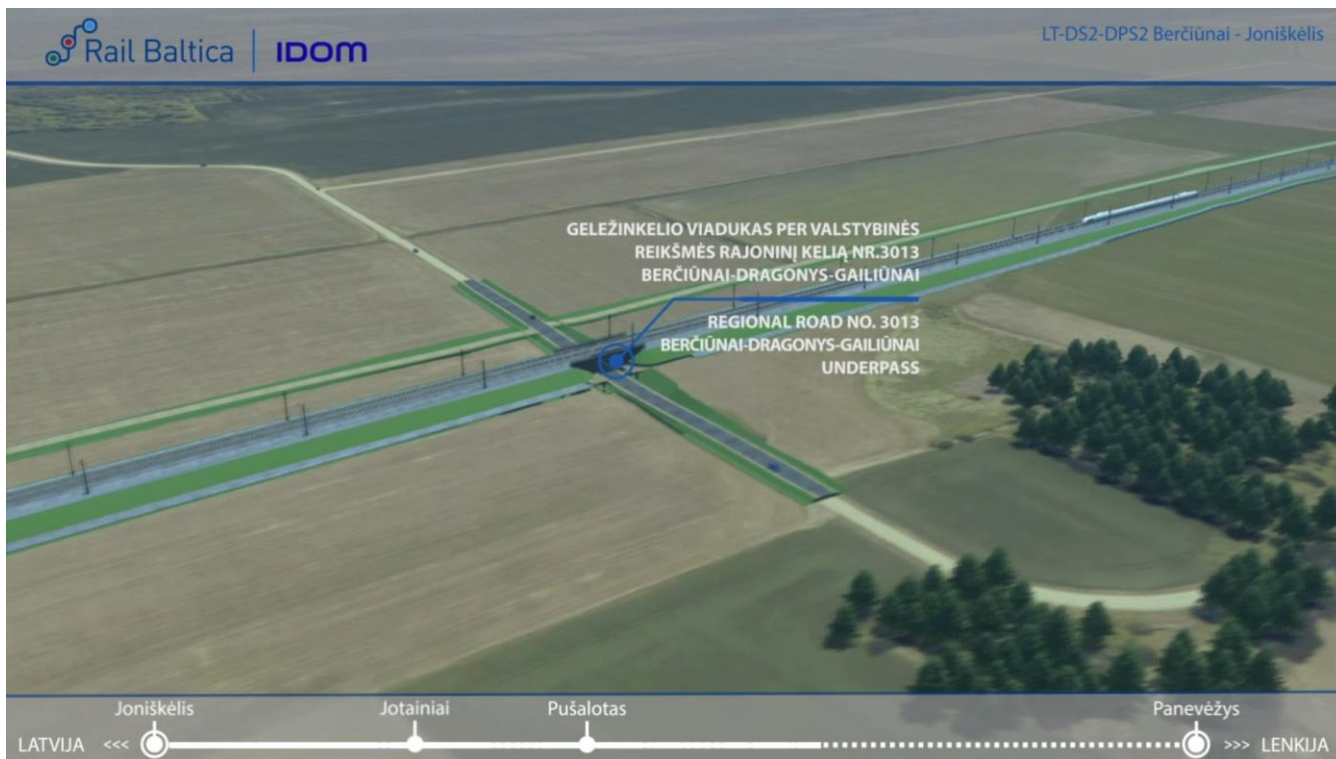
# ROAD 3013 - UNDERPASS ELEVATION AND CROSS SECTION



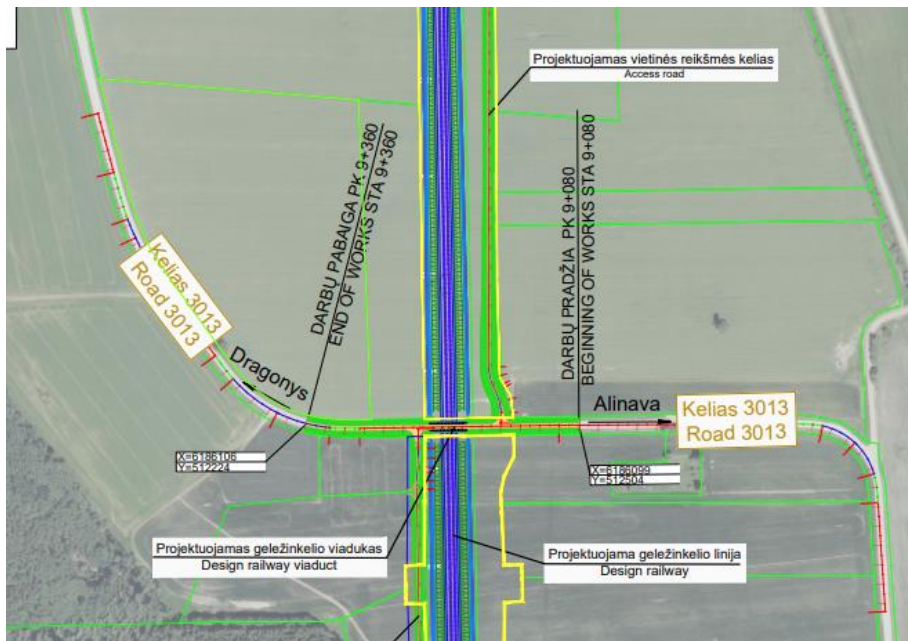
B PJŪVIS / SECTION B  
MASTELIS / SCALE 1:150  
VIENETAI / UNITS IN m

**UNDERPASS ELEVATION 2**

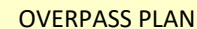
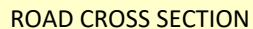




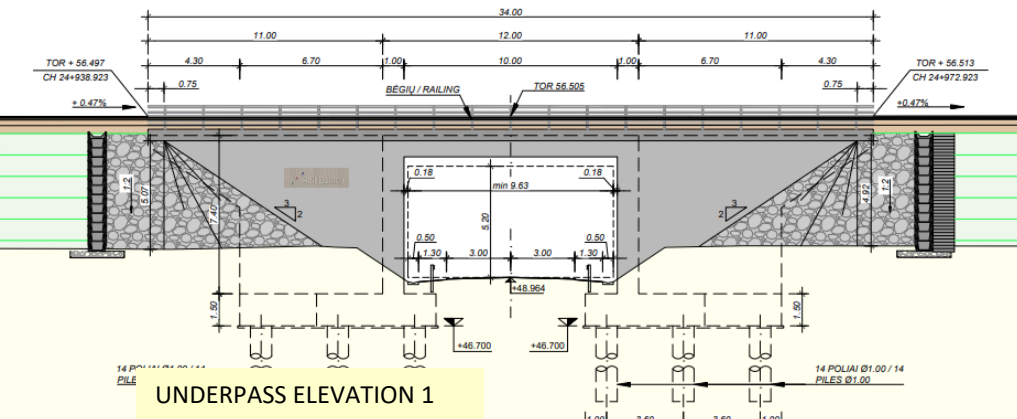
# RAILWAY-ROAD 3013 CROSSING 2 LOCATION PLAN



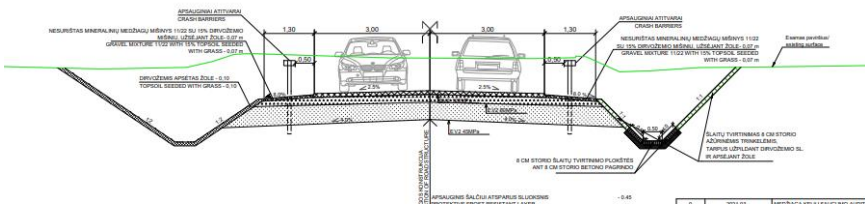
- ❑ The railway line intersects with the category IV regional road no. 3013 Berčiūnai–Dragonys. Gailiūnai from 9,080km to 9,360 km belongs to Panevezis district municipality.
- ❑ It is planned to install a railway viaduct at the intersection between railway and road.
- ❑ It is planned to install connecting roads on both sides of the railway line to ensure the accessibility of private land plots.



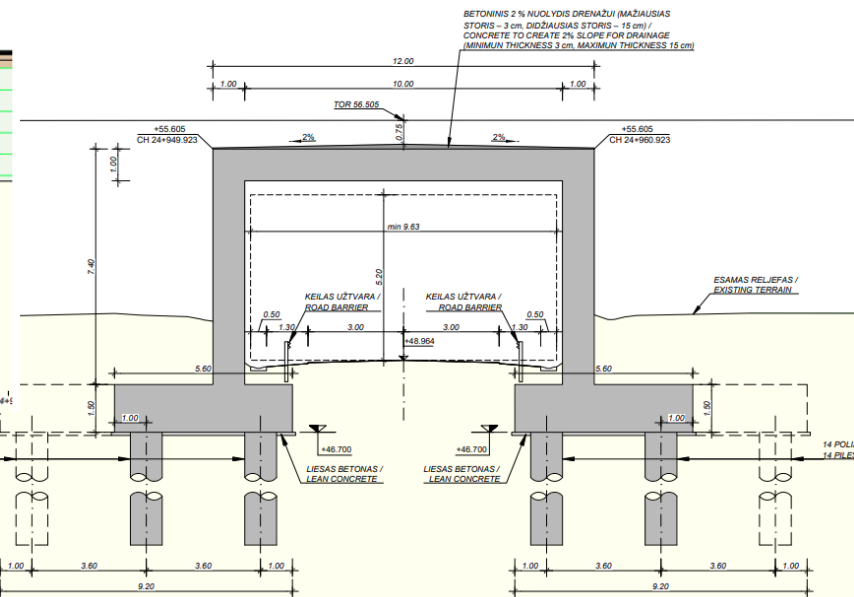
# ROAD 3013 - UNDERPASS ELEVATION AND CROSS SECTION



VALSTYBINĖS REIKŠMĖS RAJONINIO KELIO NR. 3013 DANGOS KONSTRUKCIJOS SKERSINIS PROFILIS TIES PK 9+280  
CROSS SECTION OF NATIONAL SIGNIFICANCE REGIONAL ROAD NO. 3013 AT PK 9+280

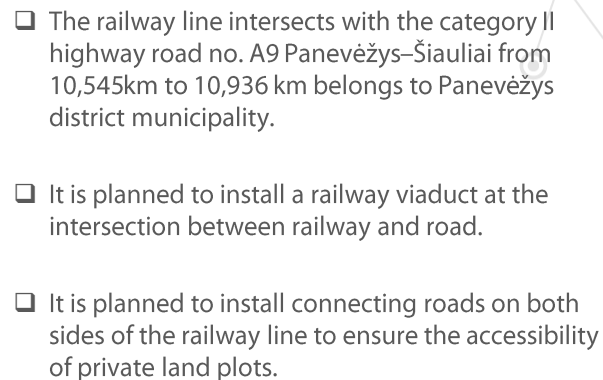


**ROAD CROSS SECTION  
UNDER RAILWAY VIADUCT**

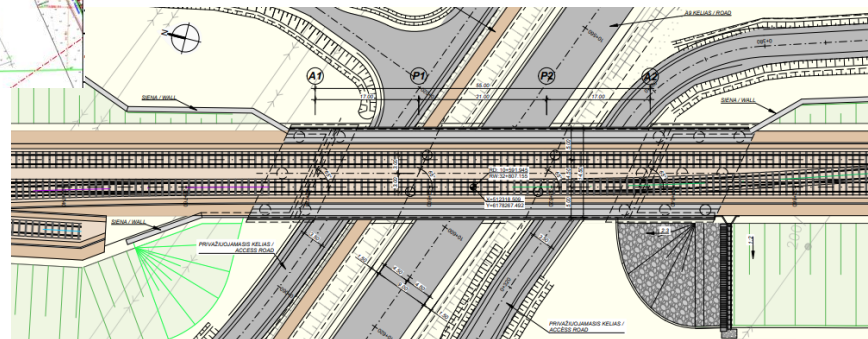
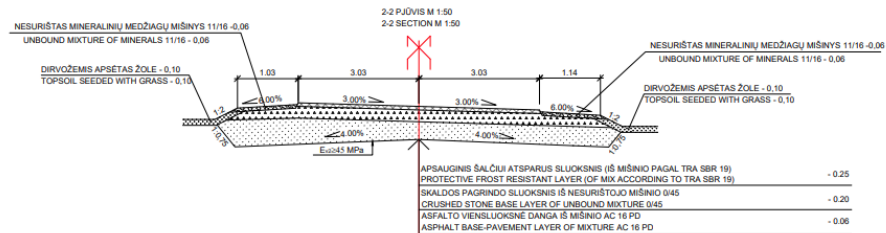
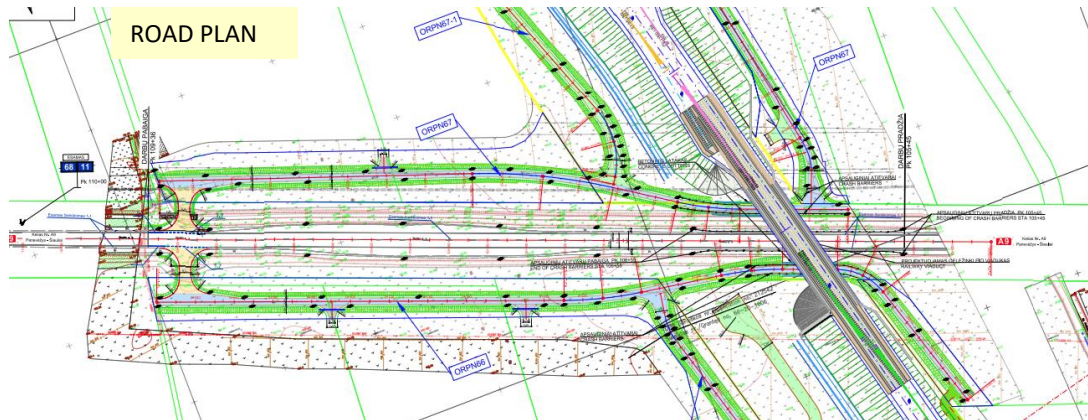


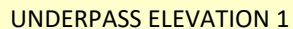
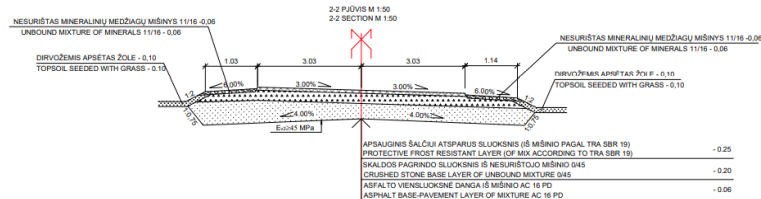






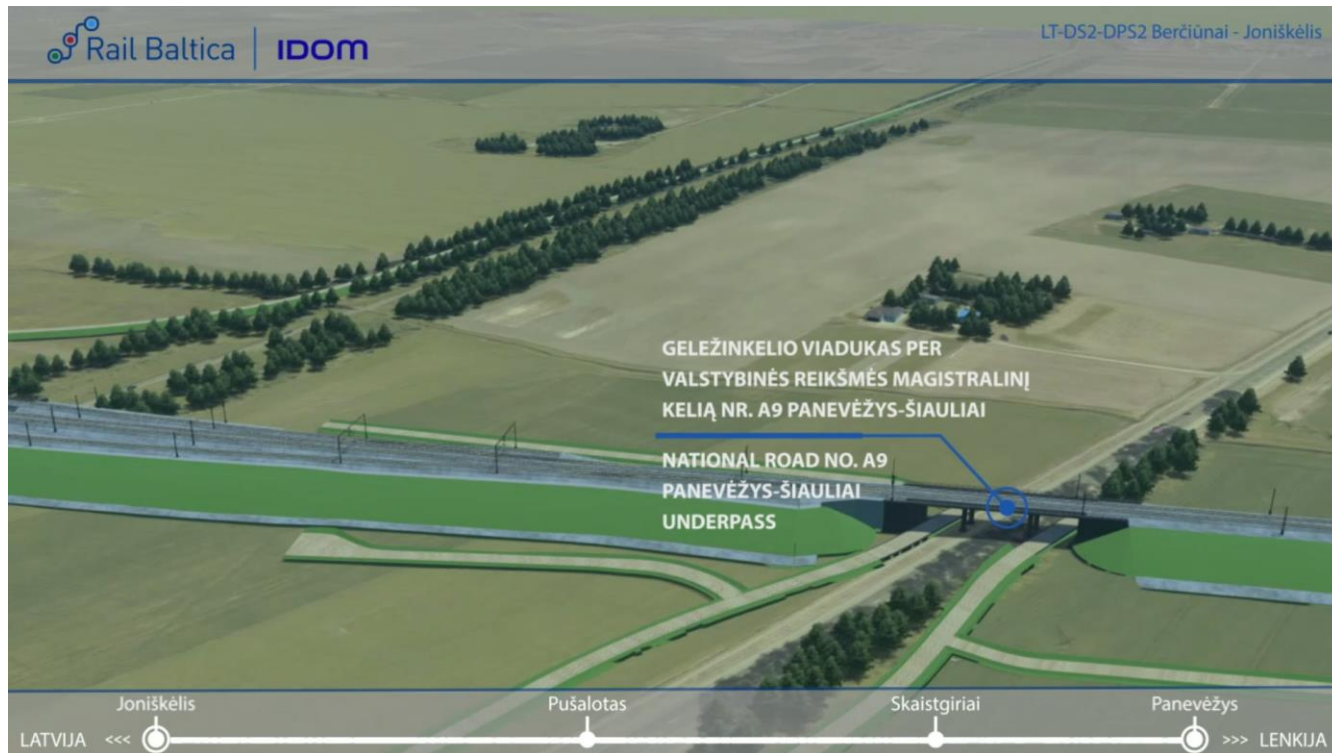
- ❑ The railway line intersects with the category II highway road no. A9 Panevėžys–Šiauliai from 10,545km to 10,936 km belongs to Panevėžys district municipality.
- ❑ It is planned to install a railway viaduct at the intersection between railway and road.
- ❑ It is planned to install connecting roads on both sides of the railway line to ensure the accessibility of private land plots.



[illegible]

### ROAD CROSS SECTION UNDER RAILWAY VIADUCT

## UNDERPASS ELEVATION 2





- ❑ „Natūra 2000“ territories have not been detected within this section.
- ❑ Animal migration studies were performed during the research phase. Based on the results obtained, it is proposed to install 1 animal passage.
- ❑ No noise mitigation measures are foreseen in this section

QUESTIONS?



THANK YOU



Check out the  
project status here:  
**[railbaltica.org](https://railbaltica.org)**

