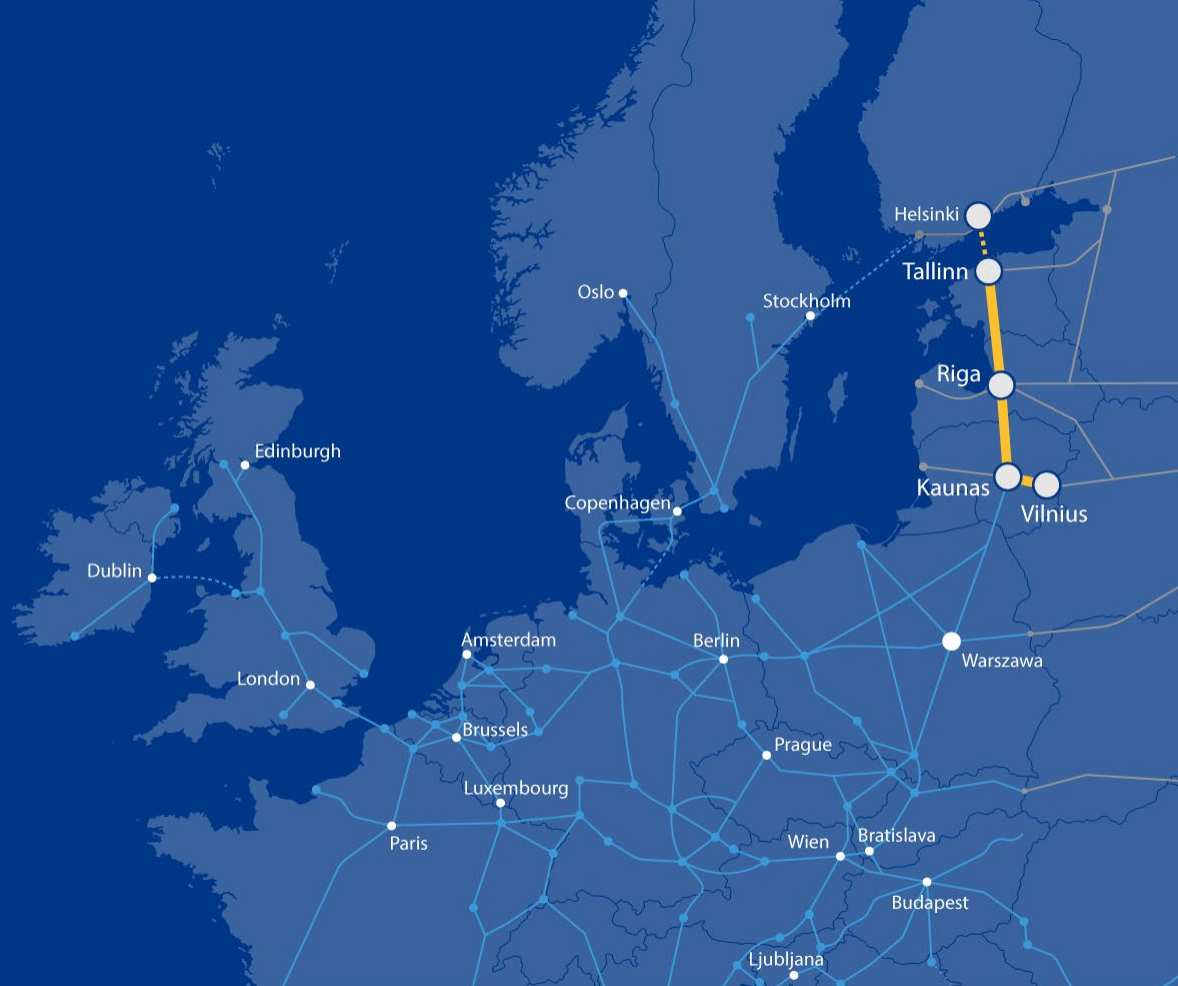




Rail Baltica section Šėta -
Ramygala,
Panevėžys district
municipality
PUBLIC HEARING



Co-financed by the Connecting Europe
Facility of the European Union

**Enrique Rico, Consultant Representative from IDOM
Consulting, Engineering and Architecture**

2021/03/23

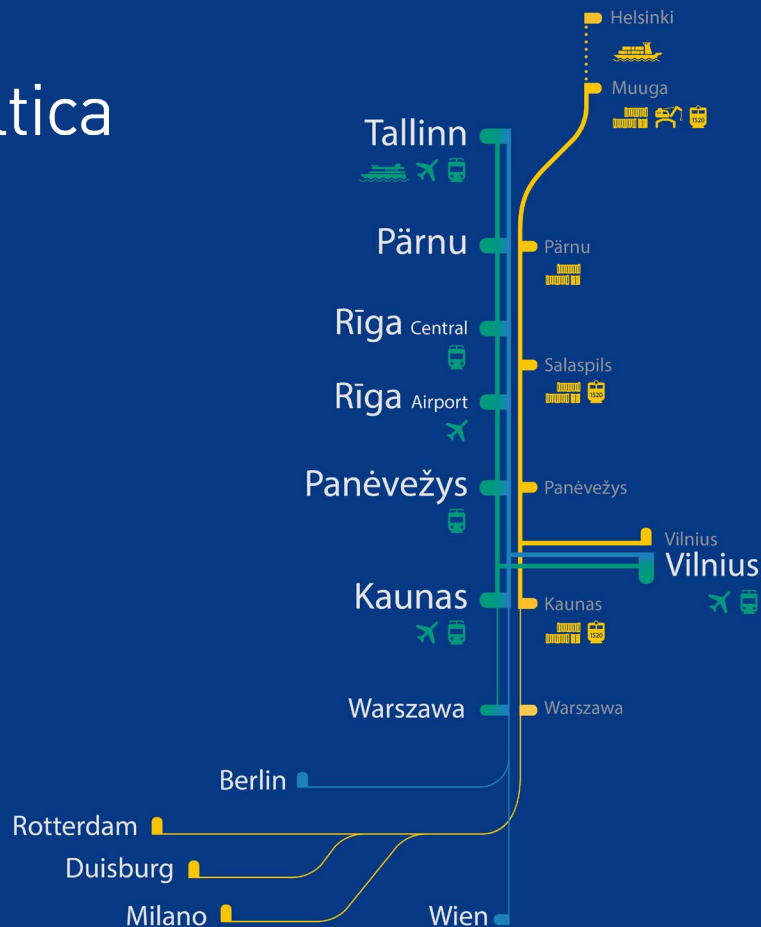


Design and design supervision services for the construction of the new line from Kaunas to Ramygala Šėta-Ramygala



Rail Baltica

- High Speed
- Night Train
- Freight



- ◉ Chairman of the public meeting – Enrique Rico, Consultant Representative from IDOM Consulting, Engineering and Architecture
- ◉ The secretary of the public meeting is [Šarūnė Tučinskaitė](#), Project Administrator from UAB Kelprojektas
- ◉ The customer is the RB Rail AS Lietuvos filialas
- ◉ The builder is the AB „LTG Infra“ under the Ministry of Transport and Communications
- ◉ Proposals from the public concerned could be submitted before and during the public meeting.
- ◉ Participants in the public meeting are registered.
- ◉ The statements of the participants of the public meeting shall be recorded in the minutes.
- ◉ The minutes of the public meeting will be prepared after the meeting in 3 working days.
- ◉ The designer publishes the minutes with annexes in IS Infostatyba in 5 working days .
- ◉ The designer submits the application for approval of the project proposals together with the project proposals, report with annexes, protocol, sound recording, directly to the civil servant of the municipal administration through the IS Infostatyba.
- ◉ Pursuant to Article 36 of the Law on Public Administration of the Republic of Lithuania, a decision made by a civil servant of the municipal administration performing the functions of the chief architect of the municipality may be appealed to the Administrative Disputes Commission or an administrative court in accordance with the law.

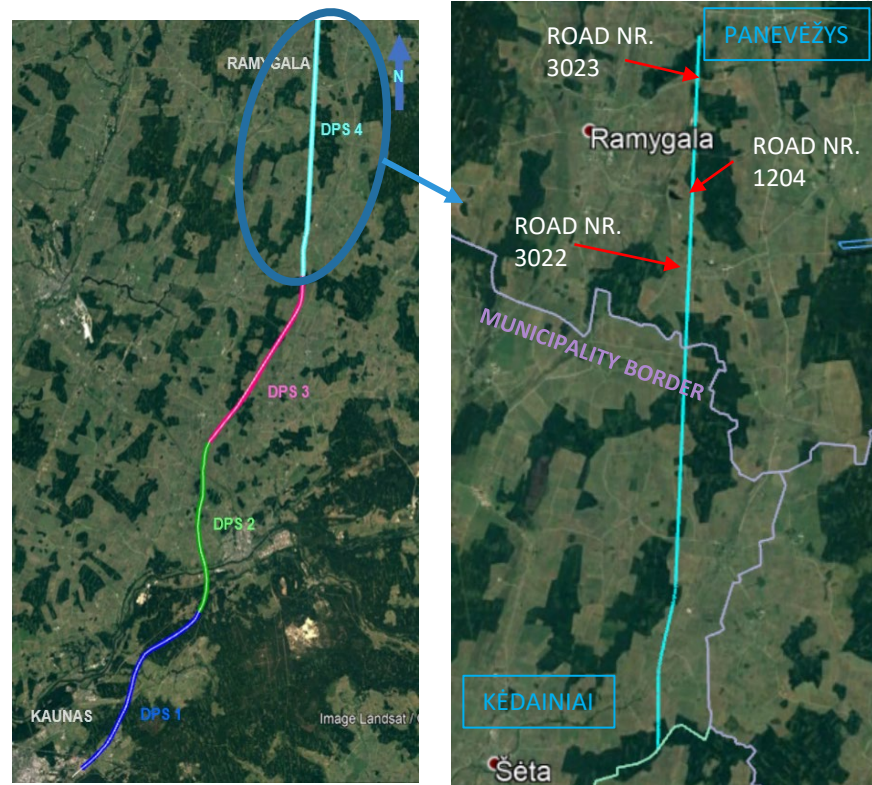
- Existing Baltics connection with EU via Poland → **difficult, high cost**
- Rail Baltica** → **joint** project of three EU Member States – **Estonia, Latvia and Lithuania.**
- New **High Speed Railway Line** → **fast-conventional double track 1435mm gauge**
- Symbolic **return** of the **Baltic States** to **Europe.**
- Rail Baltica** to become part of the **EU TEN-T North Sea – Baltic Core Network Corridor:**
linking Europe's largest ports (Rotterdam, Hamburg and Antwerp) through the Netherlands, Belgium, Germany and Poland, with the three Baltic States.
- Estonia, Latvia and Lithuania **full integration** into European railway area.

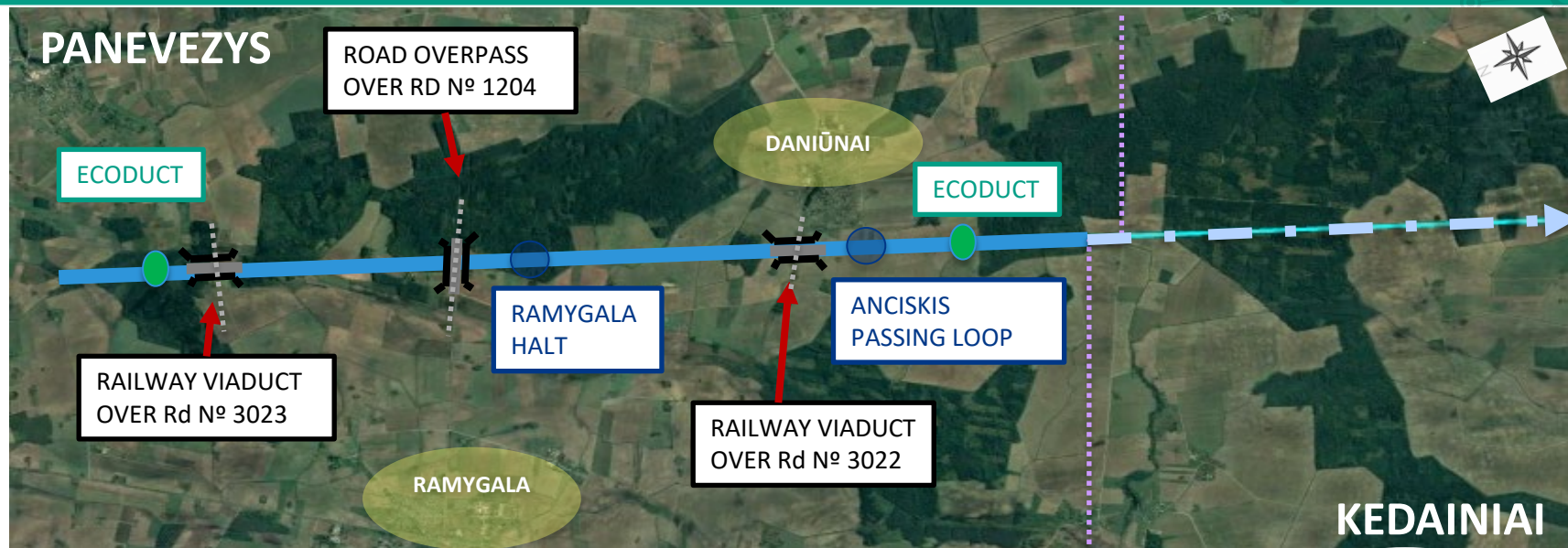


ŠĖTA-RAMYGALA SECTION GENERAL DESCRIPTION

- ⦿ This section **connects** two main population areas, **Šėta**, to the northeast of Kedainiai District Municipality, and **Ramygala**, in Panevezys District Municipality.
- ⦿ The **alignment** of this section has been designed within the boundaries of the approved **Special Plan**, running in close proximity to: **Jotainiai, Daniūnai, Pauslajys** and **Pagiriai**.
- ⦿ The stretch intersects several existing transport infrastructure, for which **new grade separated junctions** have been designed, **avoiding level crossings** that represent one of the **rail sector's biggest safety concerns**.
- ⦿ **Access roads** parallel to the new railway line have been **designed**, **ensuring connectivity** among the adjacent private landplot owners.

NOTE: For the purpose of this presentation, we'll be showing only the infrastructure within the boundaries of Panevezys Municipality.



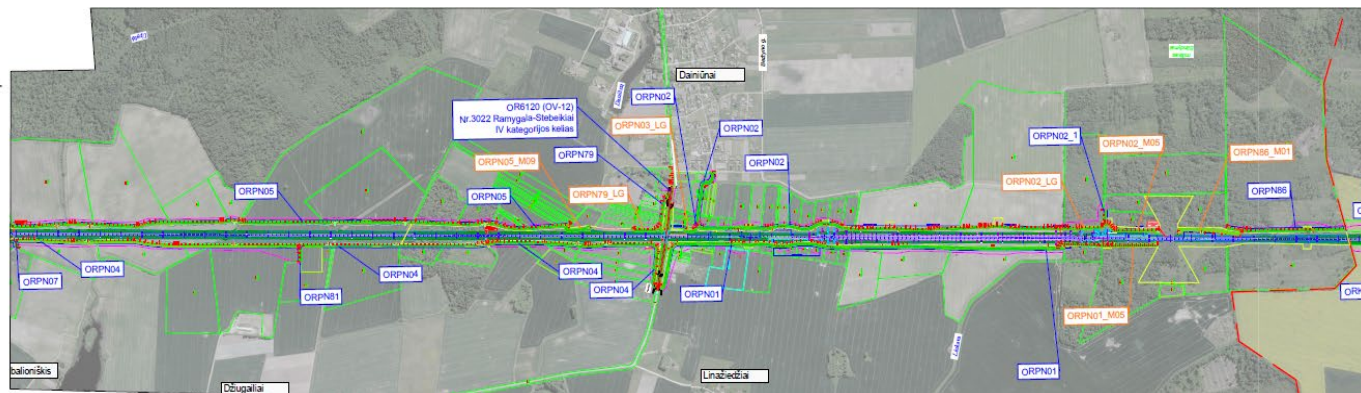
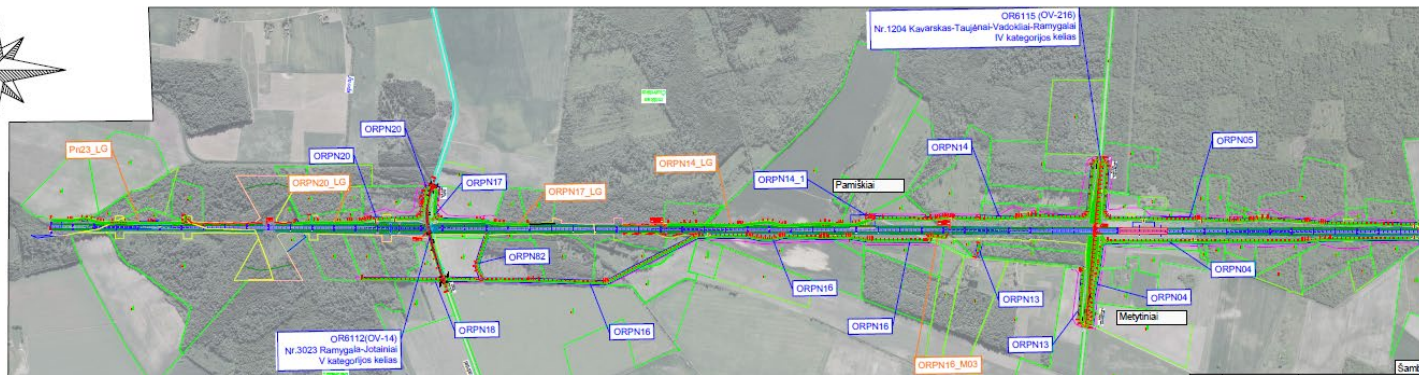


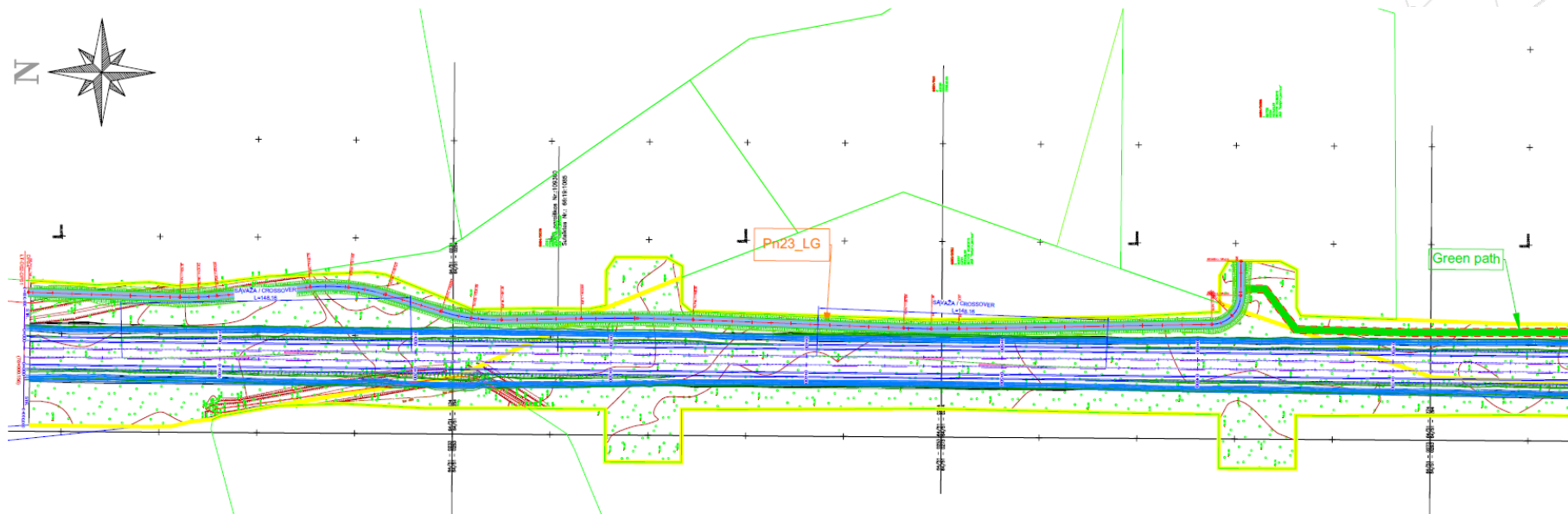
CONNECTIVITY

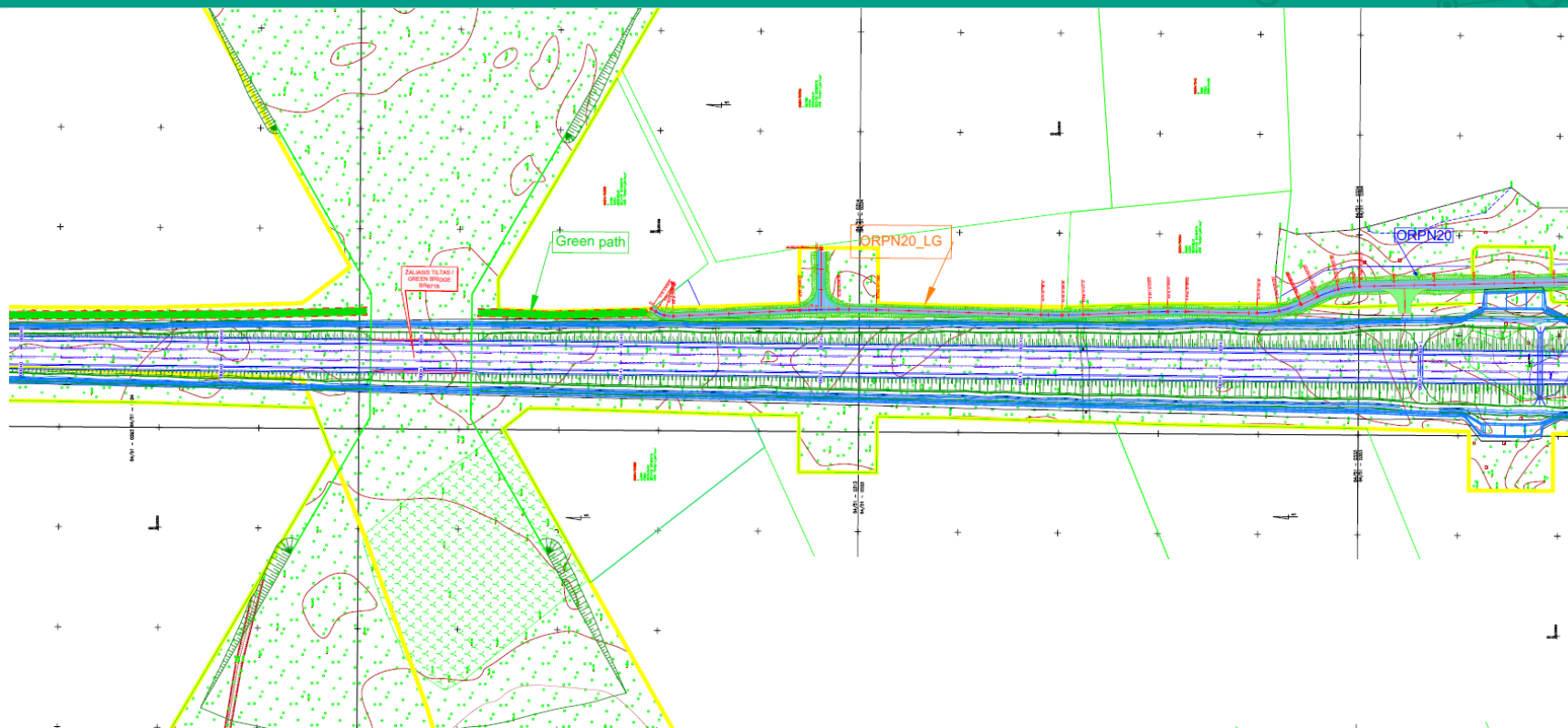
SAFETY

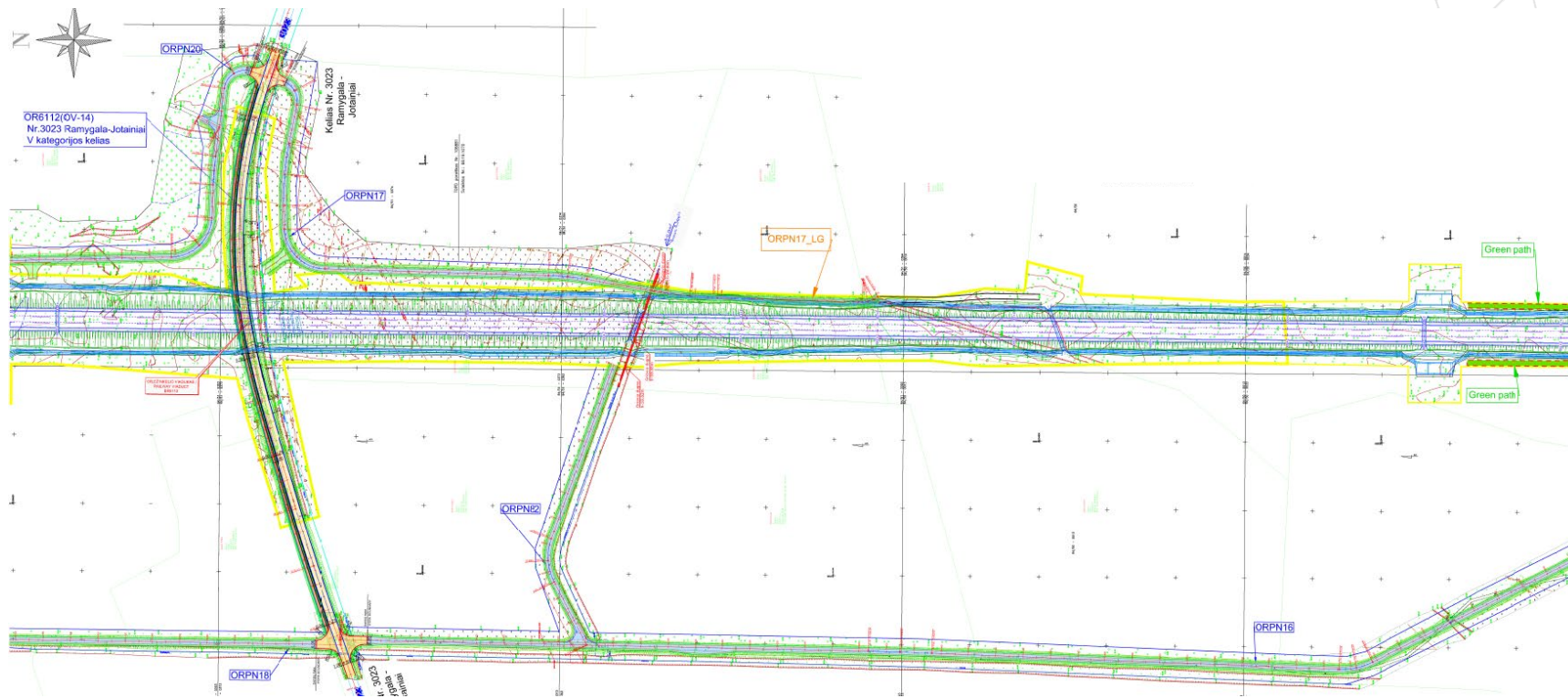
ENVIRONMENT

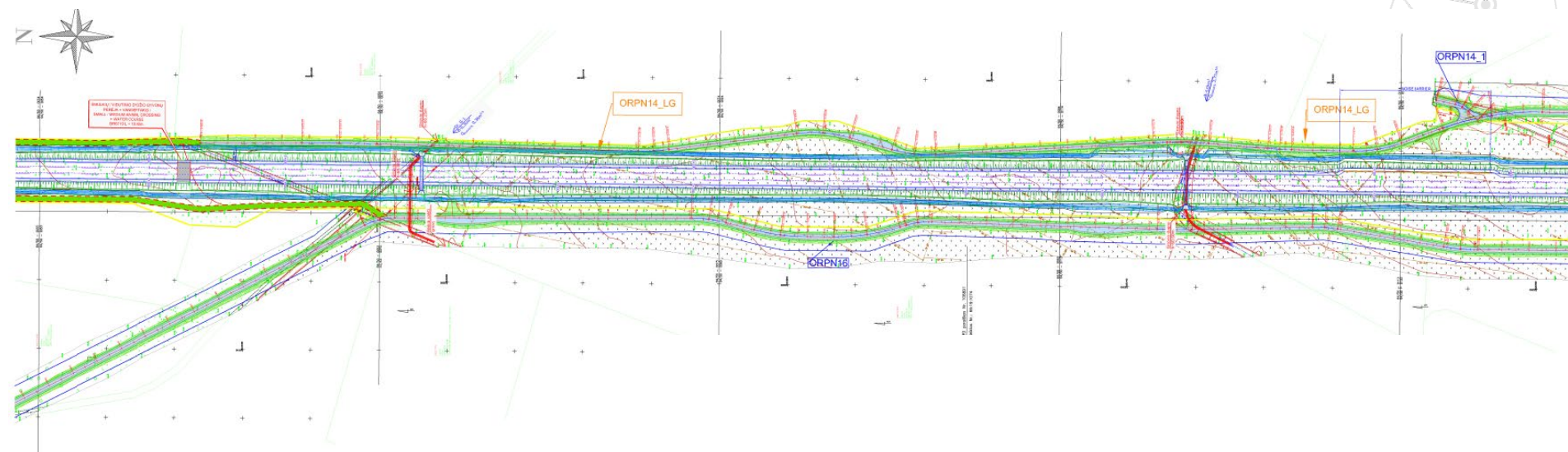
SUSTAINABILITY

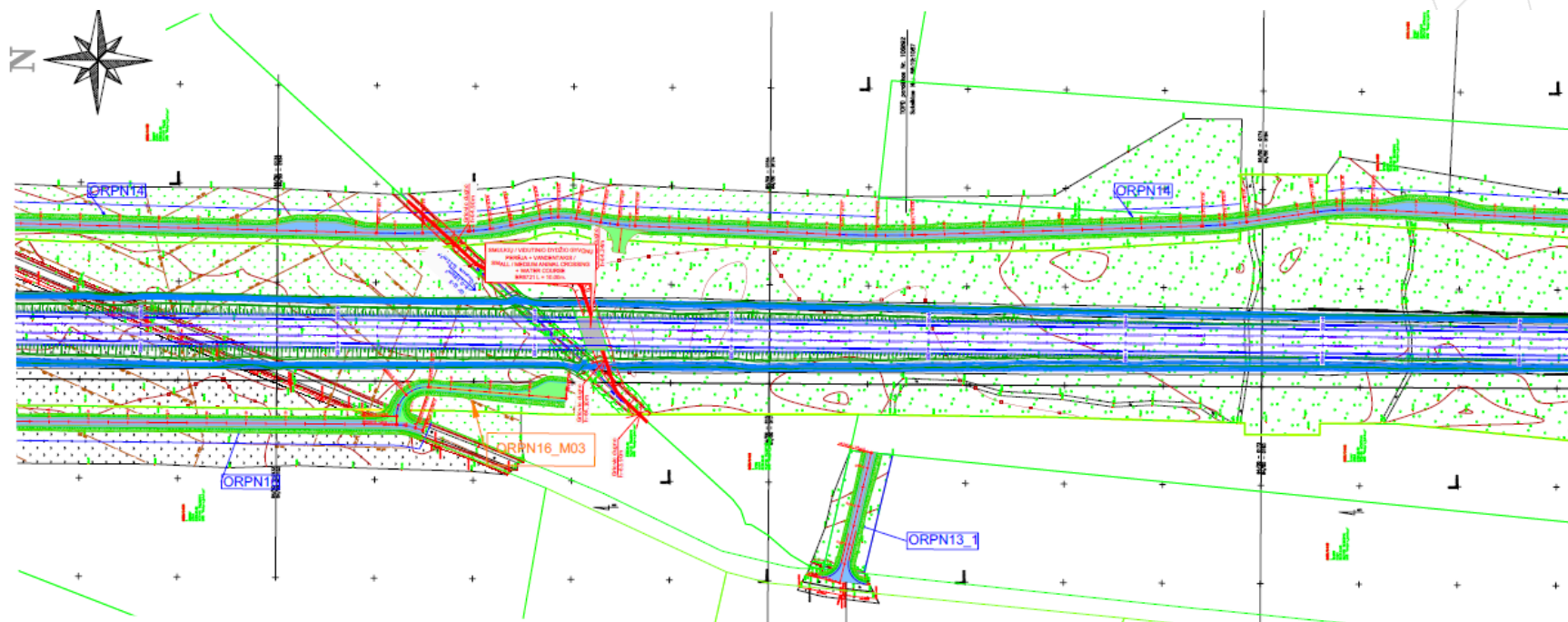


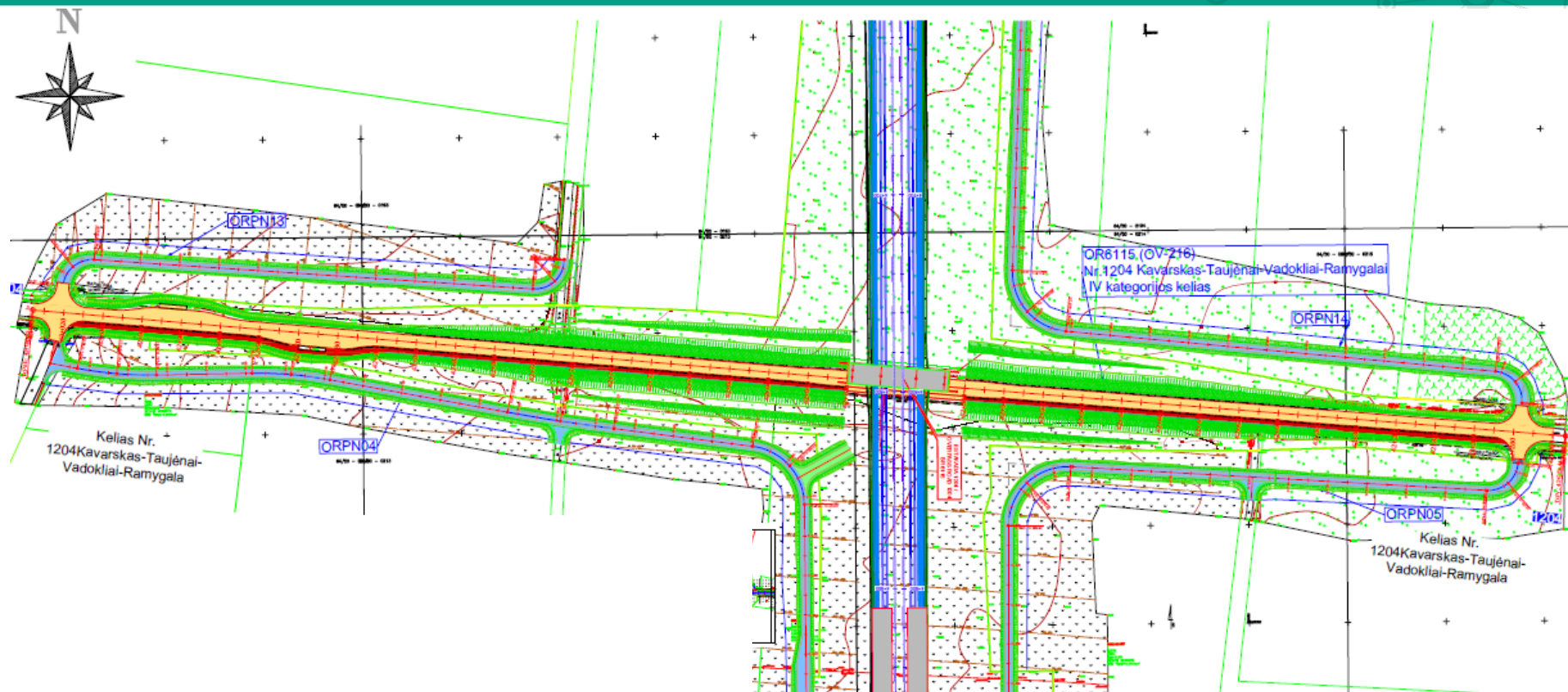


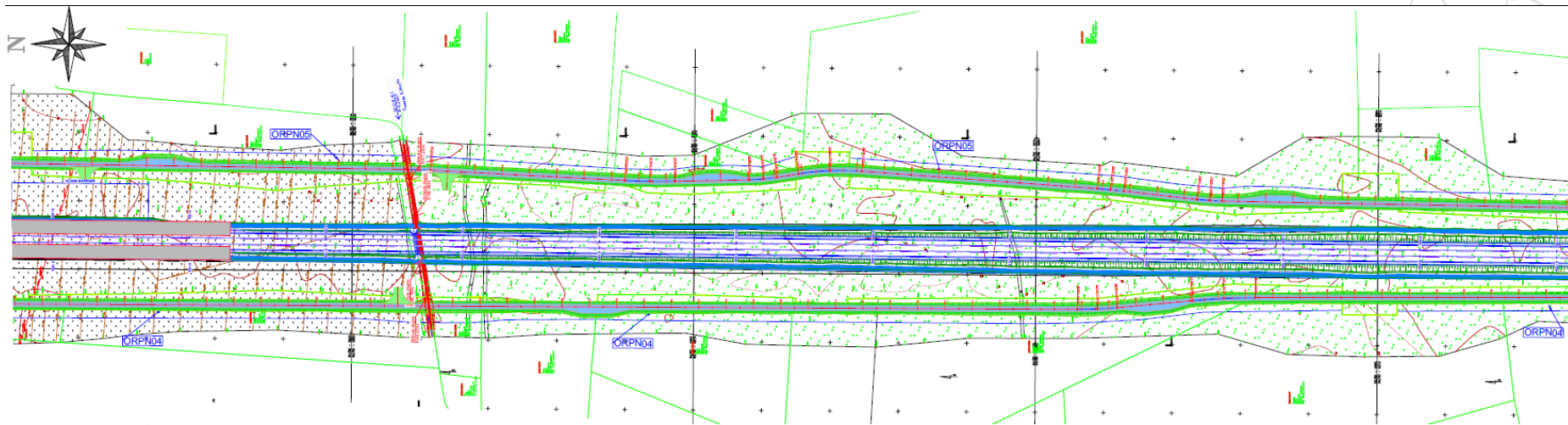


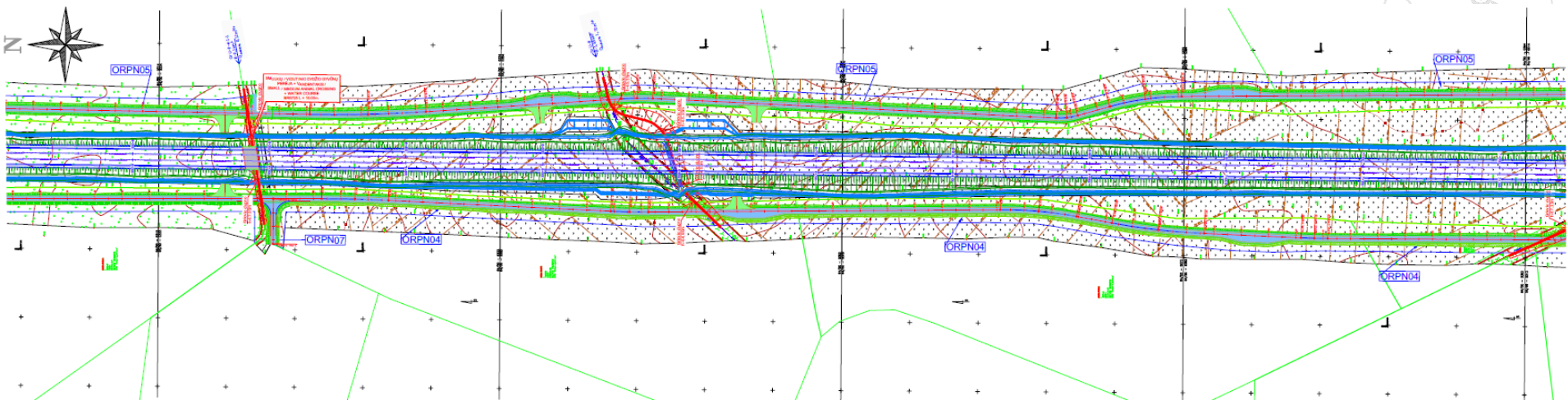


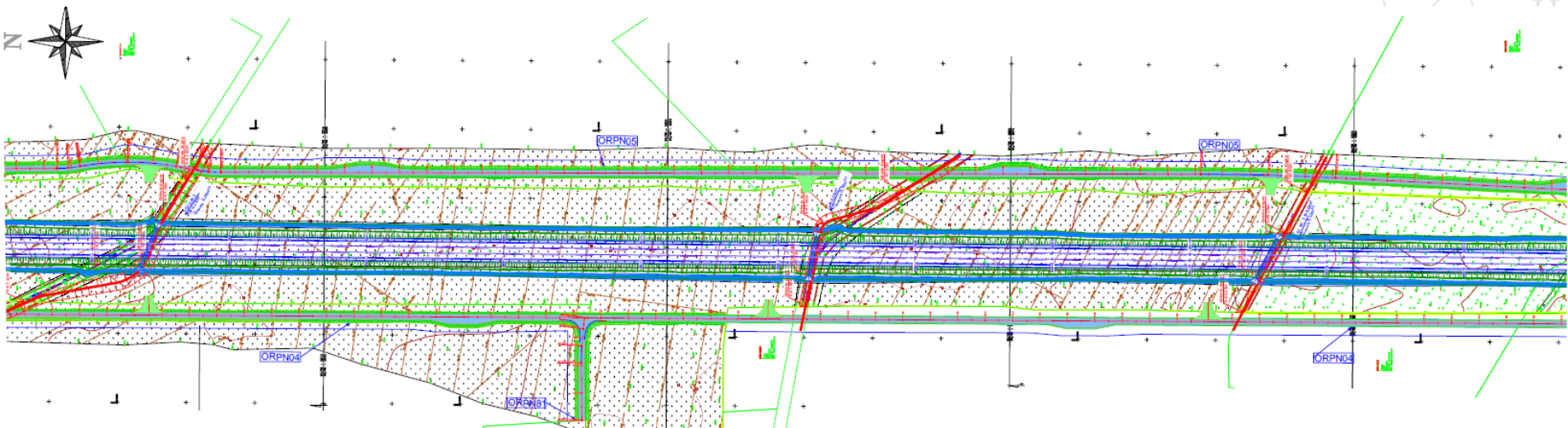


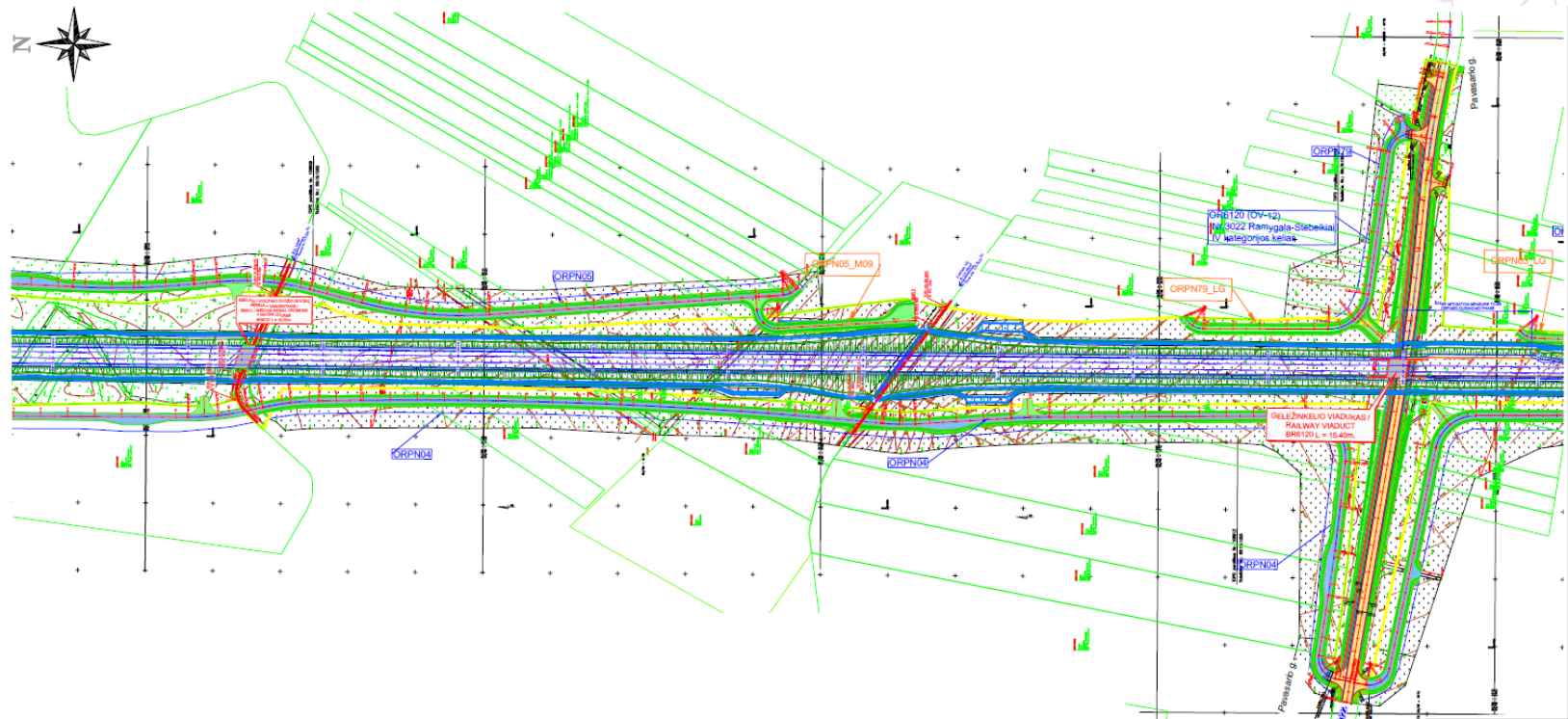


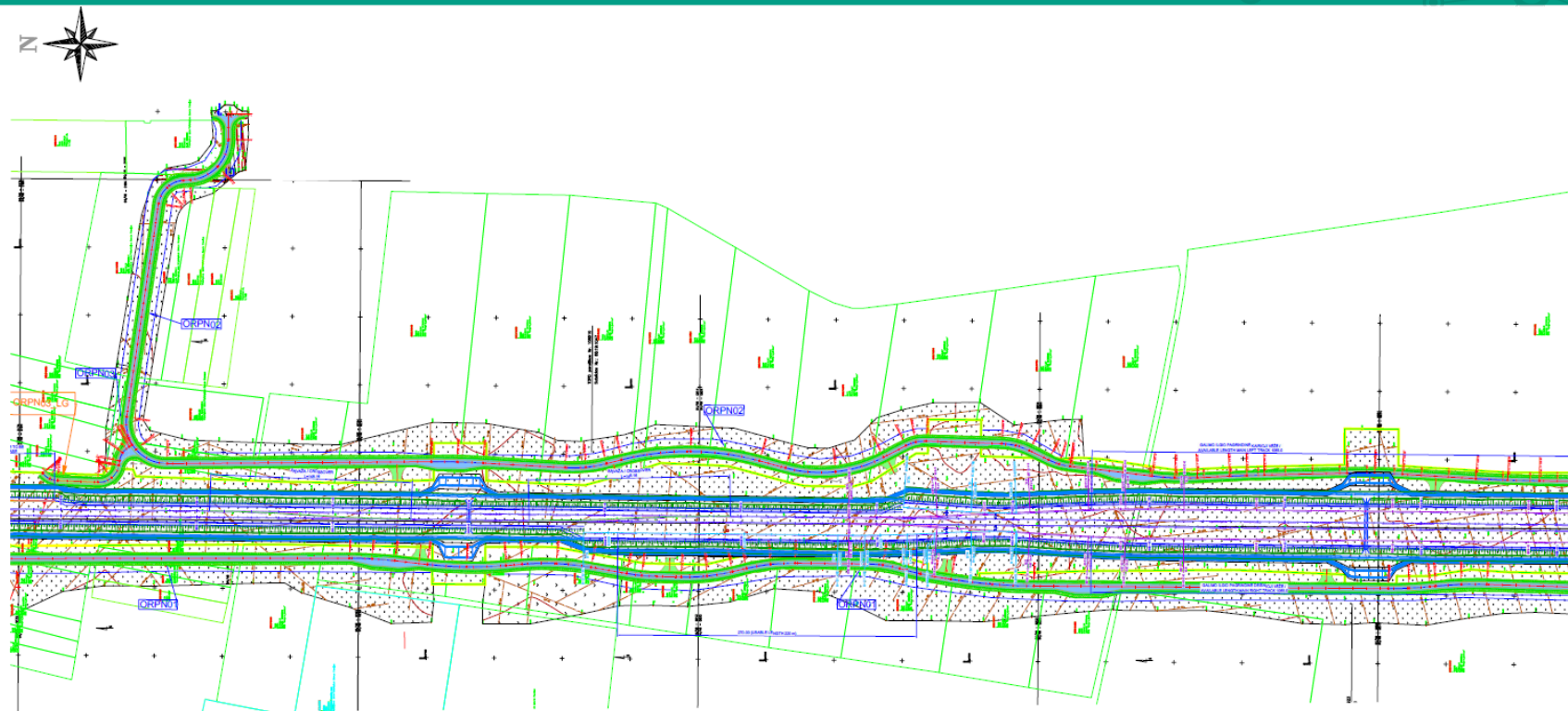


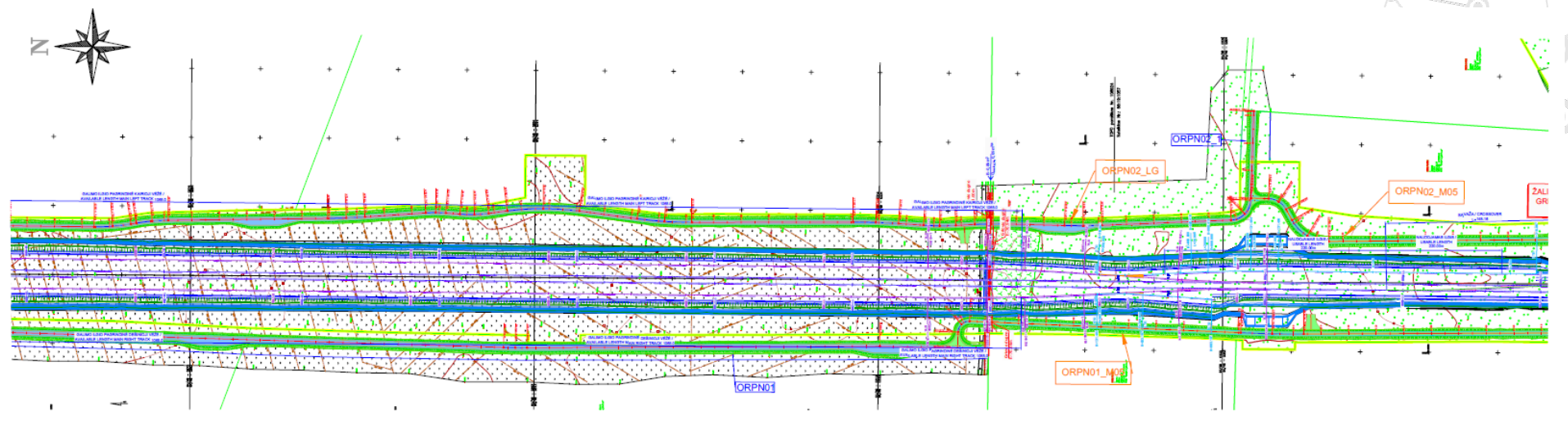


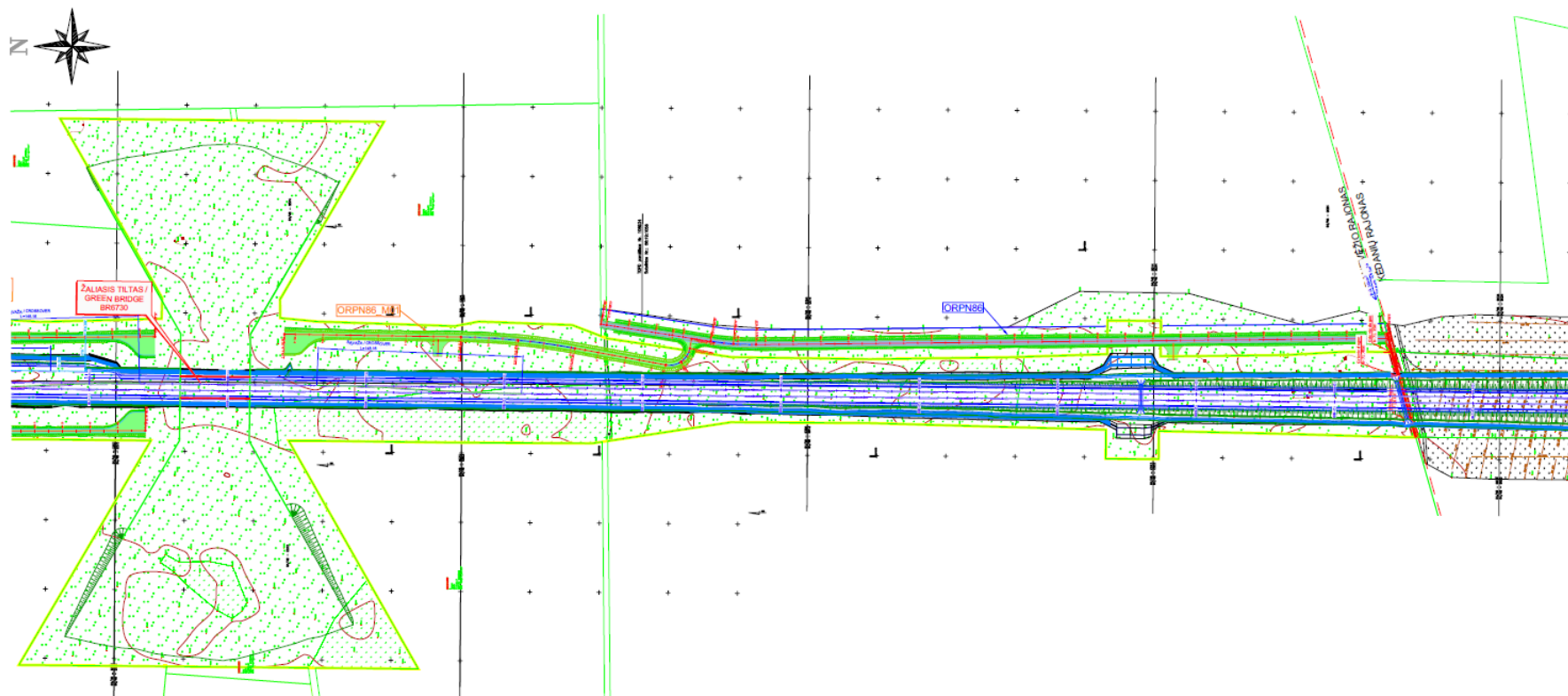




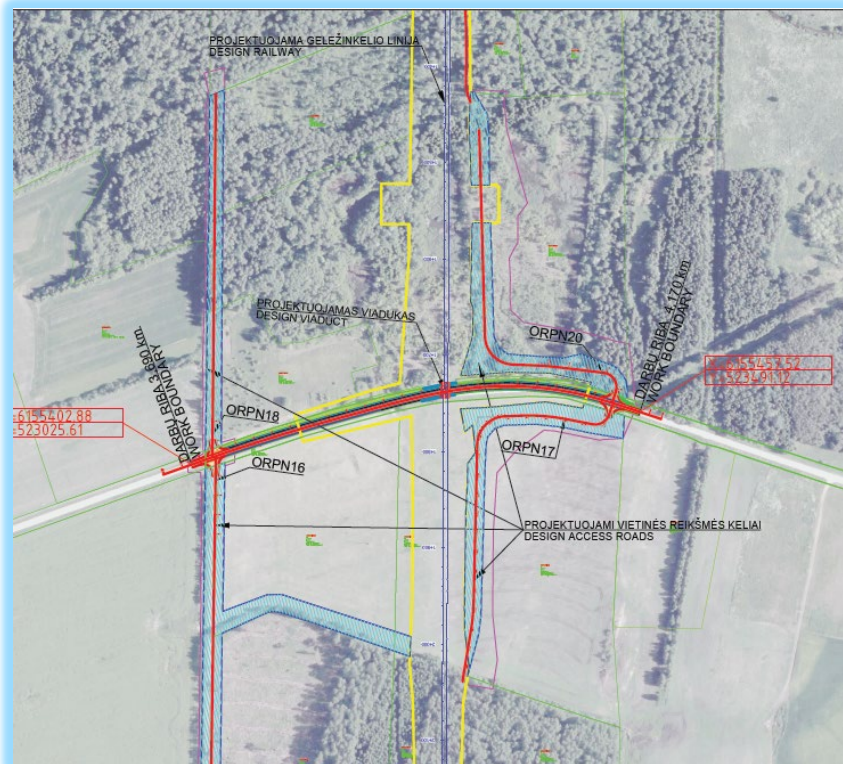








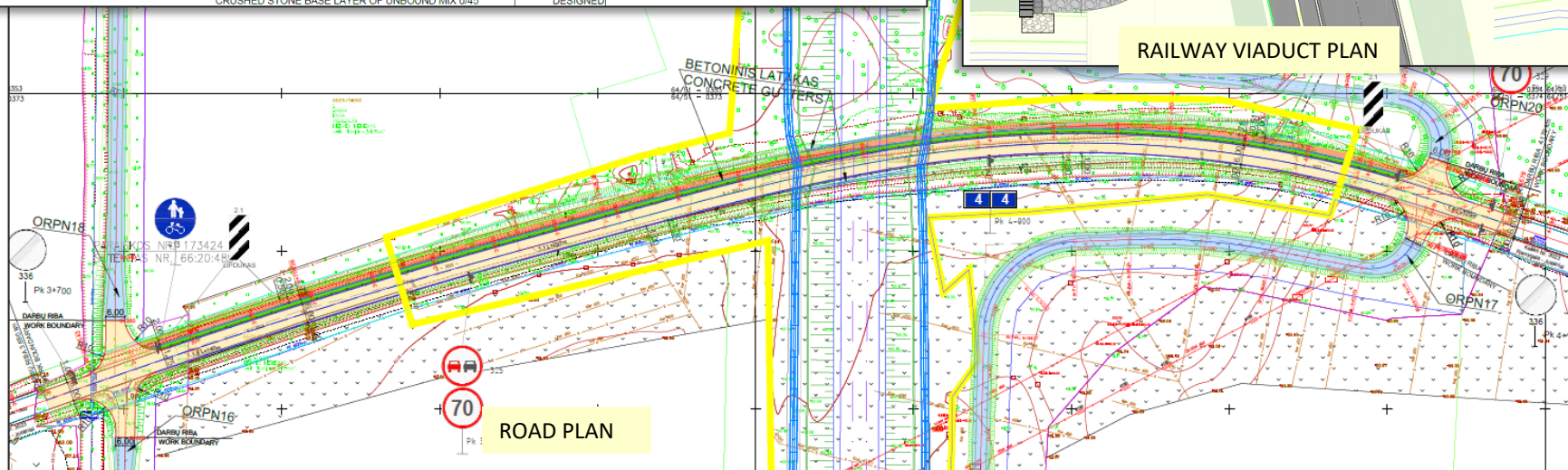
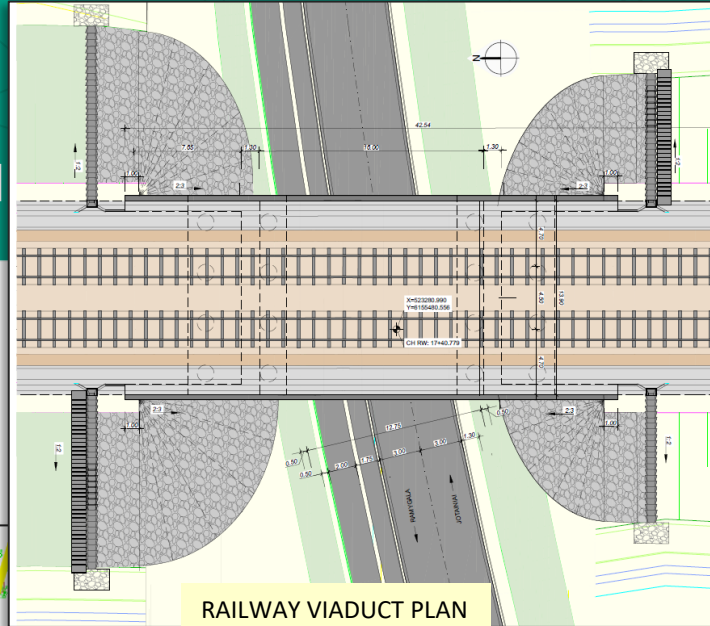
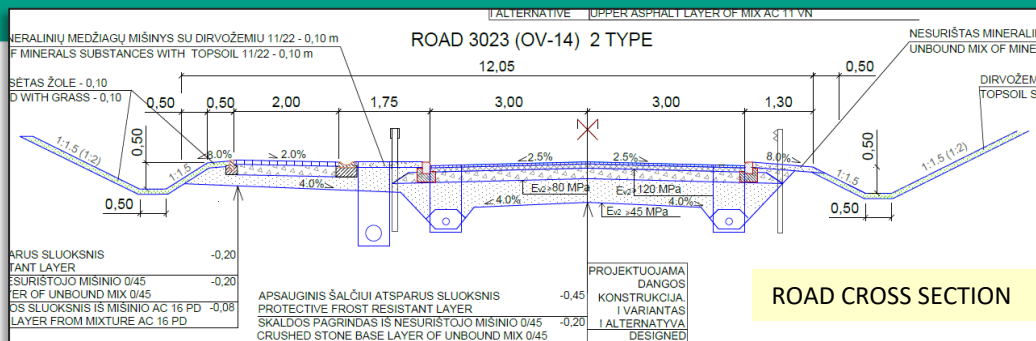
RAILWAY-ROAD 3023 CROSSING LOCATION PLAN



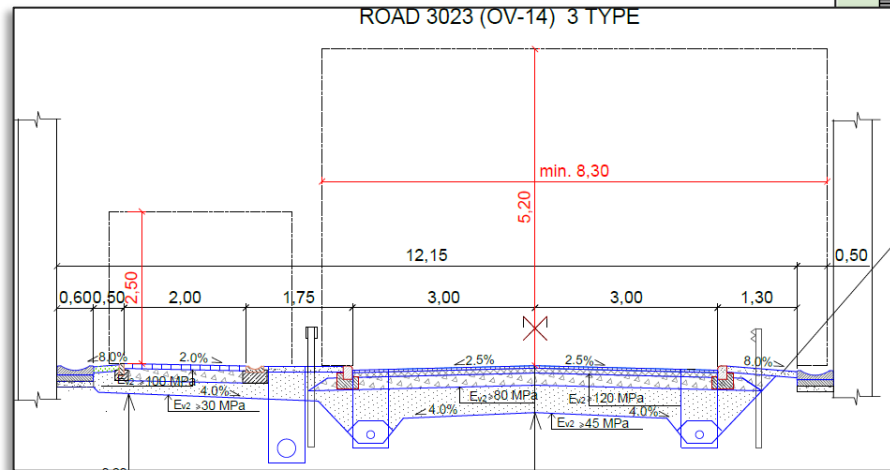
- ❑ The railway line intersects with category V regional road no. 3023 Ramygala - Jotainiai, the section from 3,690 km to 4,170 km belongs to Panevėžys district municipality, Vadokliai eldership.
- ❑ It is planned to install a railway viaduct at the intersection between railway and road.
- ❑ It is planned to install connecting roads on both sides of the railway line to ensure the accessibility of private land plots.
- ❑ On the left side of the road, a 2.00 m wide pedestrian path with asphalt pavement is being designed.
- ❑ To ensure safety for the users, the pedestrian path is separated from the district road by protective barriers.



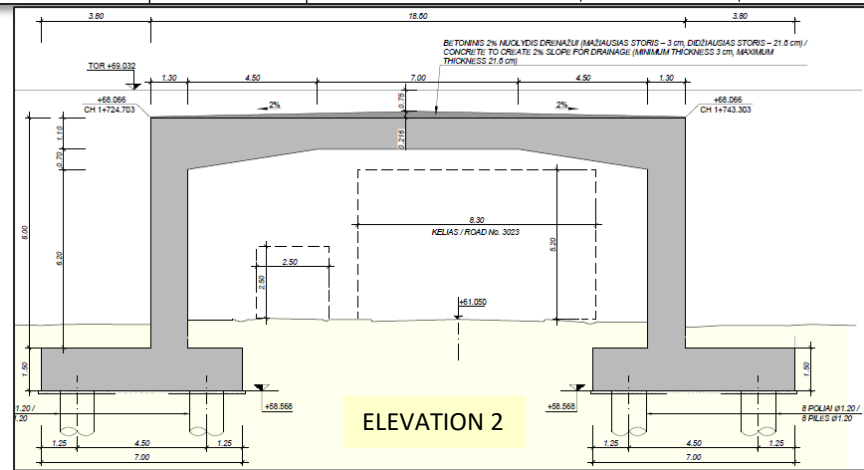
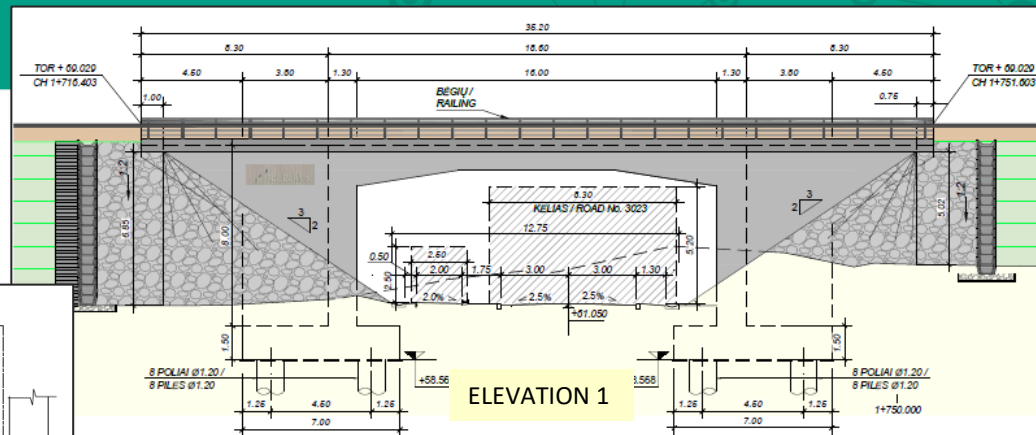
ROAD 3022 PLAN AND CROSS SECTION

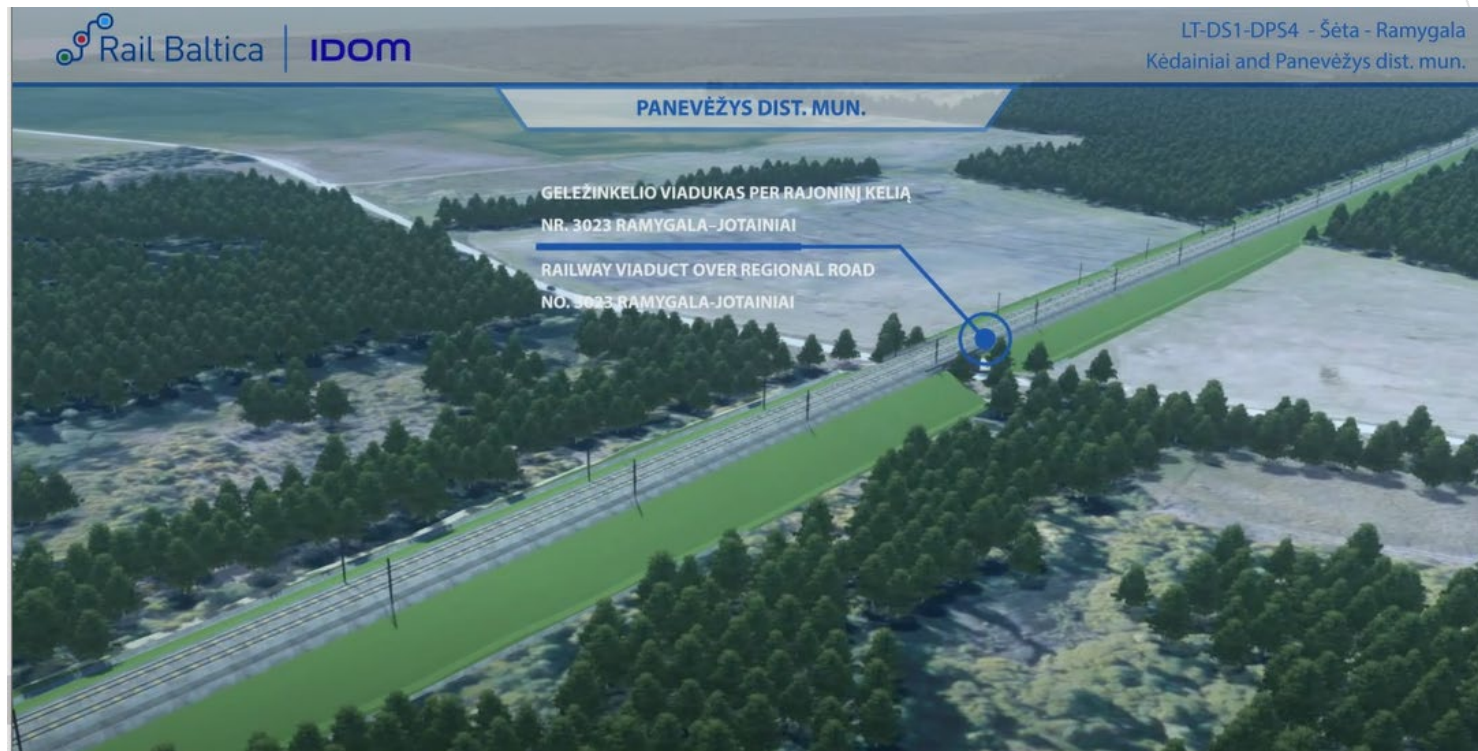


ROAD 3023 CROSS SECTION UNDER RAILWAY VIADUCT



ROAD CROSS SECTION
UNDER RAILWAY VIADUCT

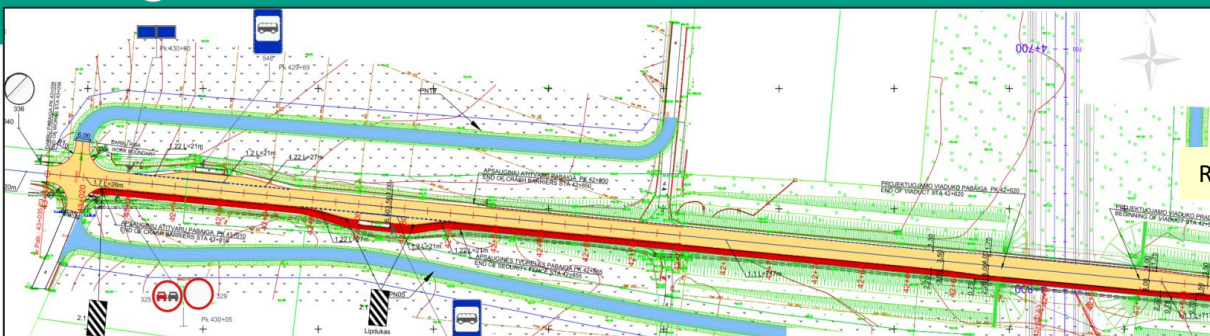




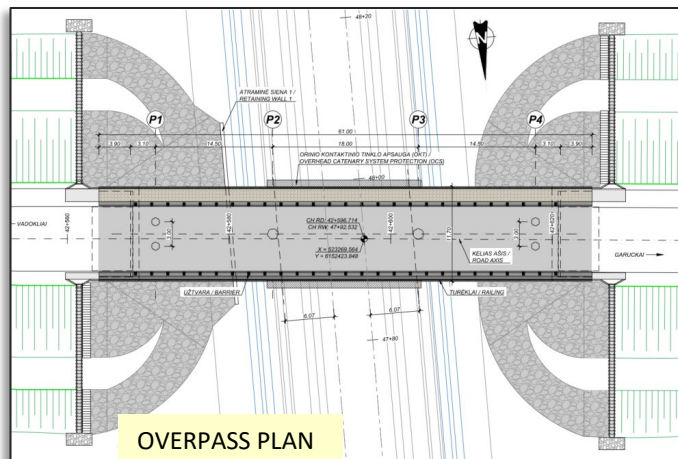
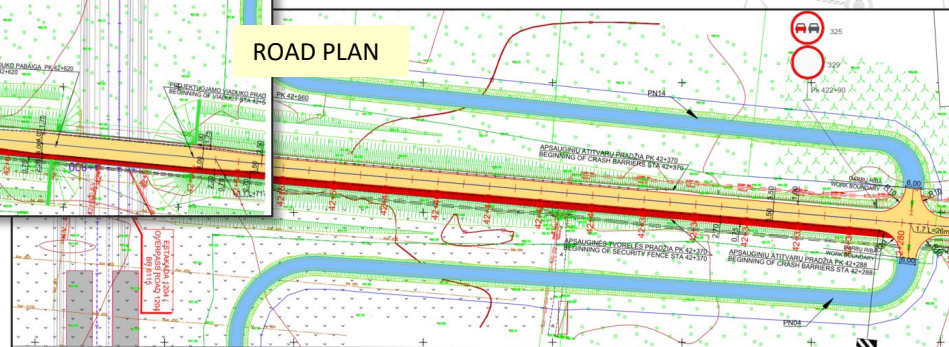
RAILWAY-ROAD 1204 CROSSING LOCATION PLAN

- ❑ The railway line intersects with the category IV regional road no. 1204 Kavarskas – Taujėnai – Vadokliai – Ramygala, the section from 42.26 km to 43.04 km belongs to Panevėžys district municipality, Ramygala eldership.
- ❑ It is planned to install a road overpass at the intersection between railway and road.
- ❑ It is planned to install connecting roads on both sides of the railway line to ensure the accessibility of private land plots.
- ❑ On the left side of the road, a 2.70 m wide cycle path with asphalt pavement is being designed.
- ❑ To ensure safety for the users, the pedestrian path is separated from the district road by protective barriers.

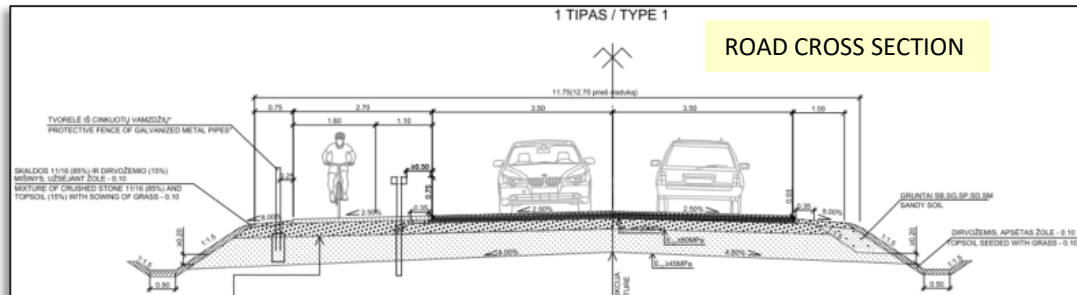




ROAD PLAN

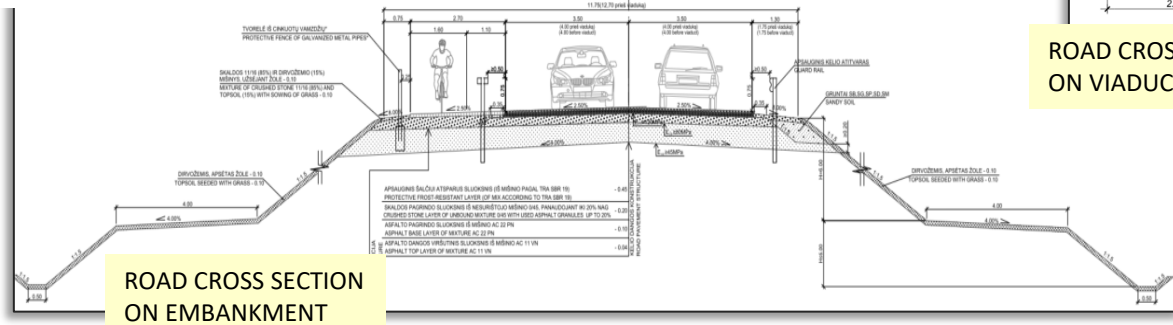
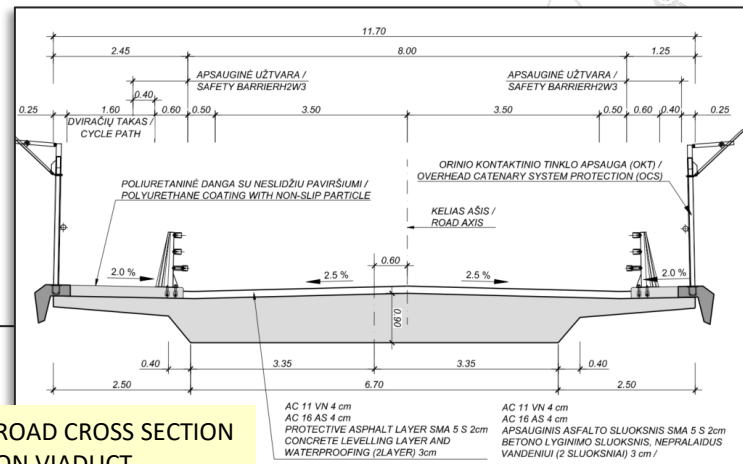
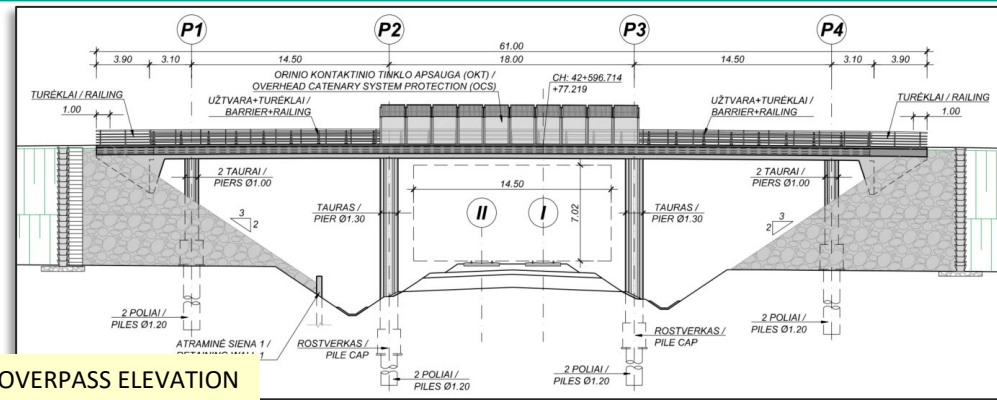


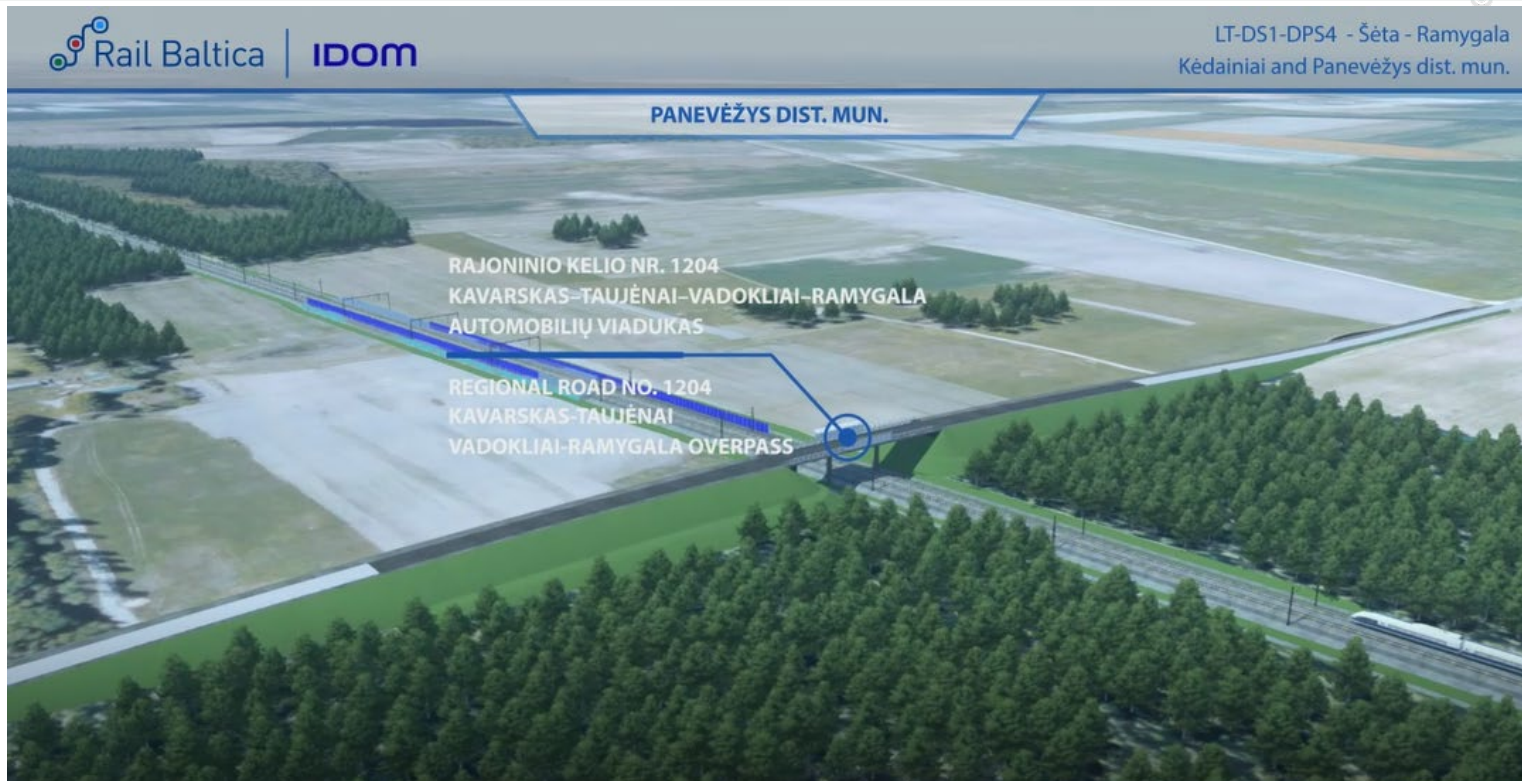
OVERPASS PLAN



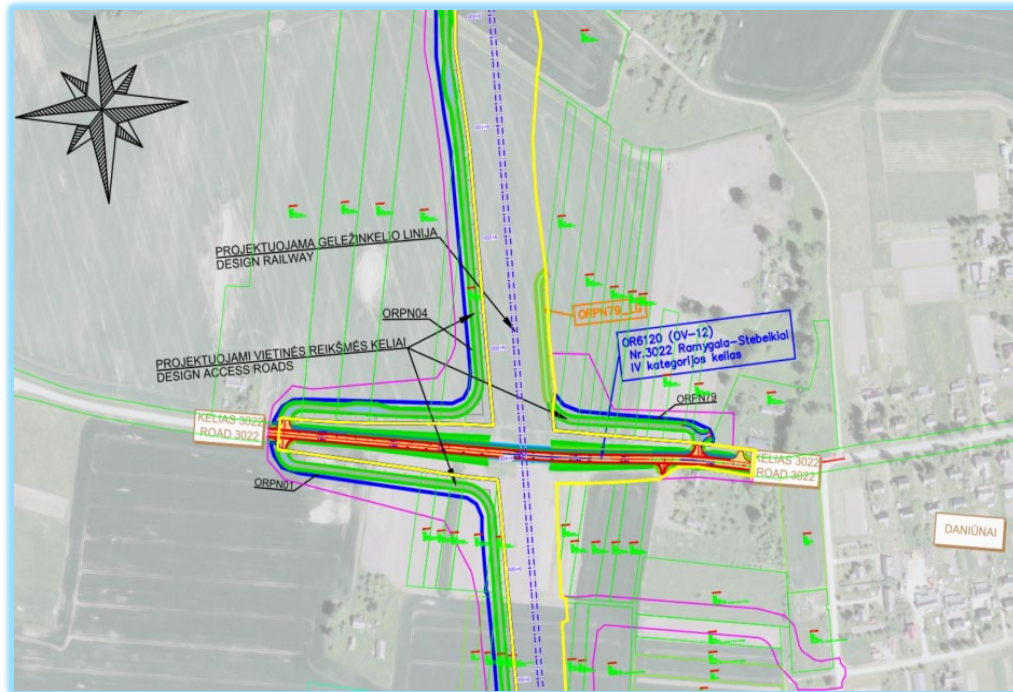
ROAD CROSS SECTION

ROAD 1204 - OVERPASS ELEVATION AND CROSS SECTION



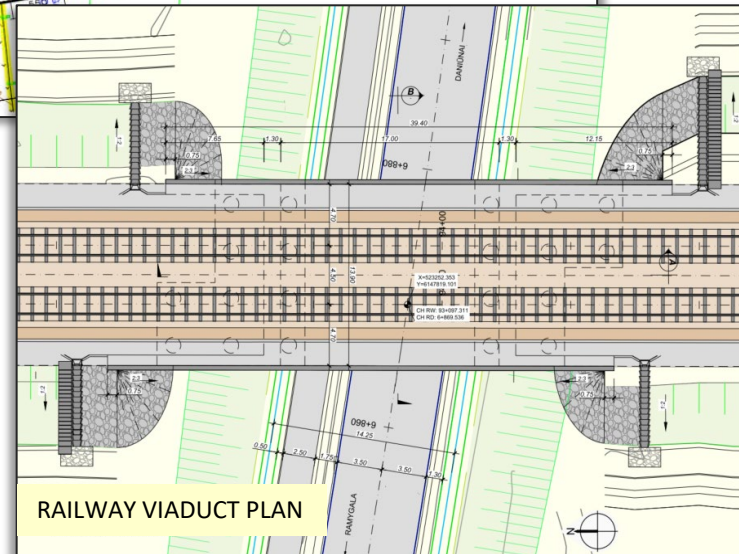
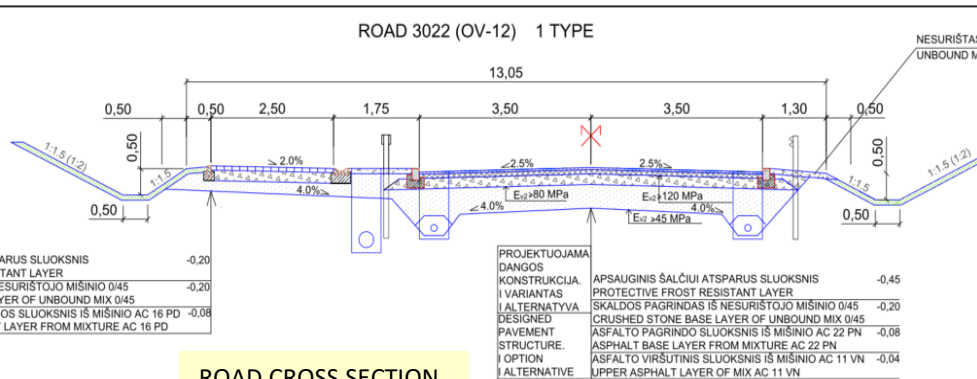


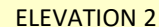
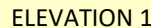
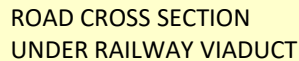
RAILWAY-ROAD 3022 CROSSING LOCATION PLAN



- ❑ The railway line intersects with the category IV regional road no. 3022 Ramygala - Observers, stretch from 6,620 km to 7,100 km.
- ❑ It is planned to install a railway viaduct at the intersection between railway and road.
- ❑ It is planned to install connecting roads on both sides of the railway line to ensure the accessibility of private land plots.
- ❑ On the left side of the road, a 2.50 m wide pedestrian path with asphalt pavement is being designed.
- ❑ To ensure safety for the users, the pedestrian path is separated from the district road by protective barriers.

RAILWAY VIADUCT PLAN AND ELEVATION







- ❑ „Natūra 2000” teritorijų šiame ruože nebuvo nustatyta.
- ❑ Migration studies were conducted during the research phase - in accordance with the results, 2 green bridges or ecoducts plus 4 animal passages (3x10m) have been proposed.
- ❑ 4 amphibian gates are foreseen in this section
- ❑ The railway line crosses the following watercourses:
 - Kuršėlės upė/river
 - Upytės upė/river

These water bodies will be subject to appropriate protection measures during construction and operation.

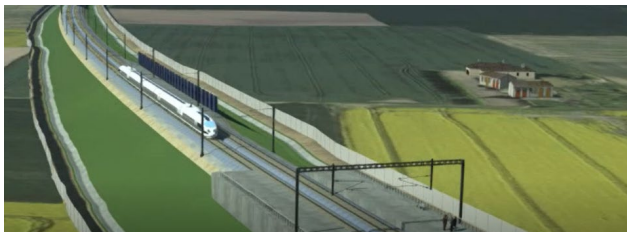
Several noise mitigation measures are proposed in the vicinity of settlements:

Noise reduction barriers;

Rail dampers

NOISE MITIGATION MEASURES

Residential area	Location	Noise mitigation measure
Panevėžys district municipality, Ramygala eldership, Pamiškiai village	3+631 – 3+811	Noise Barriers
Panevėžys district municipality, Ramygala eldership, Mėtytiniai village	4+169 – 4+469 4+837 – 5+047 4+938 – 5+128	Noise Barriers
Panevėžys district municipality, Ramygala eldership, Kuršiai village	8+389 – 8+549 8+950 – 9+116	Noise Barriers and Rail Dampers
Panevėžys district municipality, Ramygala eldership, Daniūnai village	9+314 – 9+612	Rail Dampers



Example of Noise barrier



Example of Noise barrier

QUESTIONS?



THANK YOU



Check out the
project status here:
railbaltica.org

