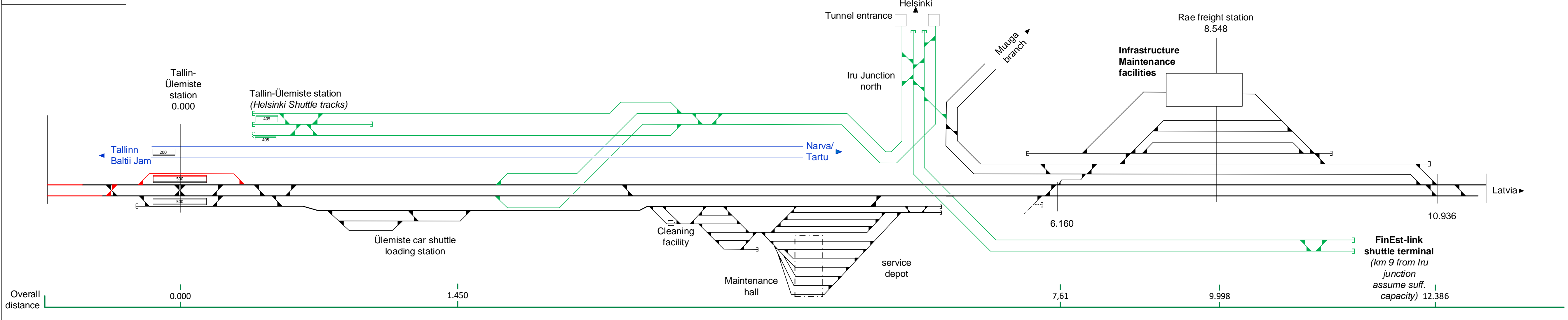
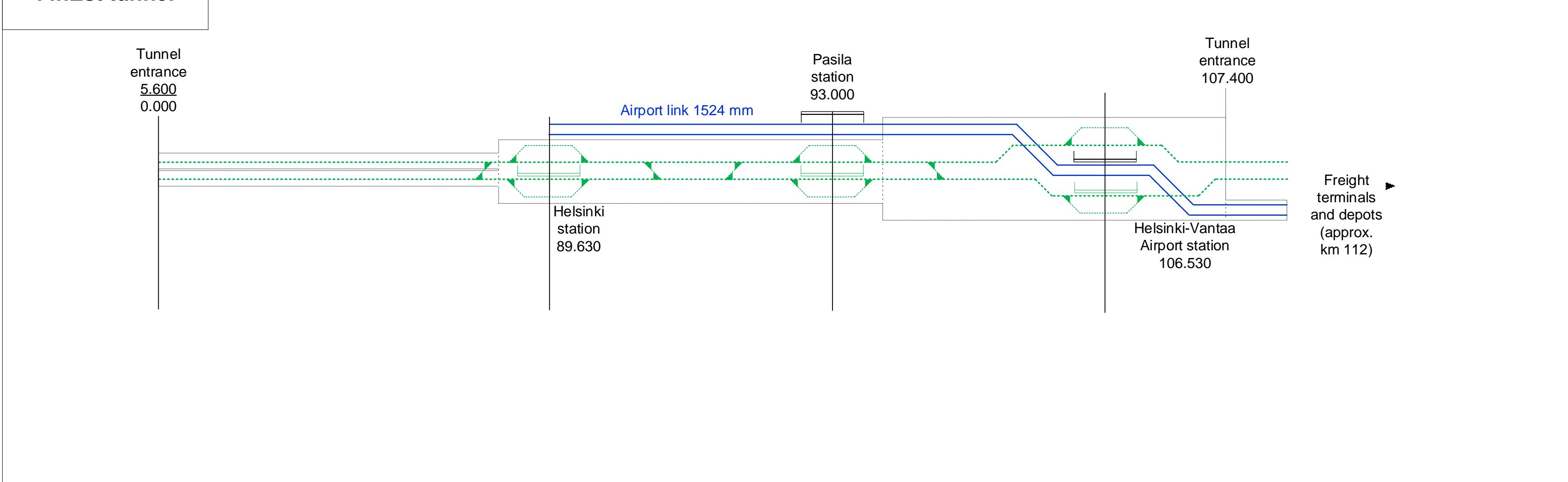


Main Track Part 1



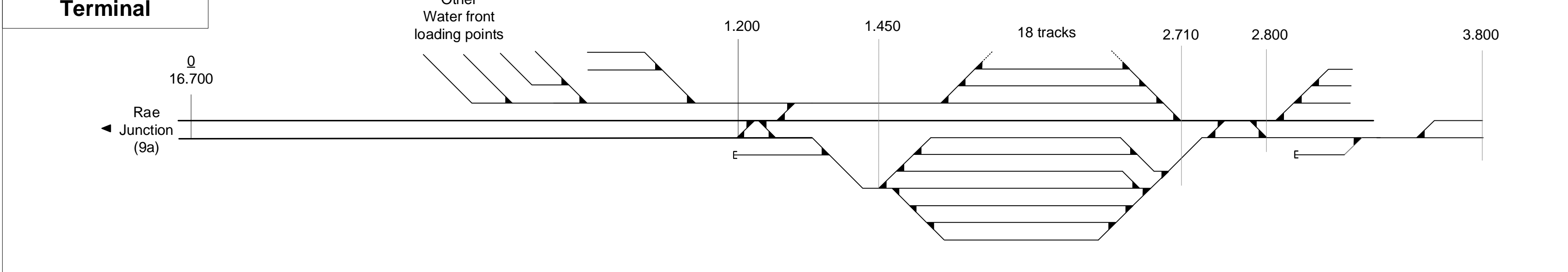
FinEst tunnel



Legend

- Track Layout in 2026 (Black line)
- Track Layout in 2036-46 (Red line)
- Track Layout in 2056 (Green line)
- Interfaces to local facilities/ other projects (Dashed line)
- Track 1520 mm (Blue line)
- Dual gauge track 1435/1520 mm (Blue line with red border)
- Optional track (Dotted line)
- Passenger platform (405 m / 210 m) (Grey rectangle)
- Turnout with indication of line- km (Line with arrow and number)
- Operational point with indication of line-km (Vertical line with number)
- Planning section border with change of line-km (Vertical line with number)
- change of line-km (Vertical line with number)
- Speed on specific turnout in diverging direction (Line with number and arrow)

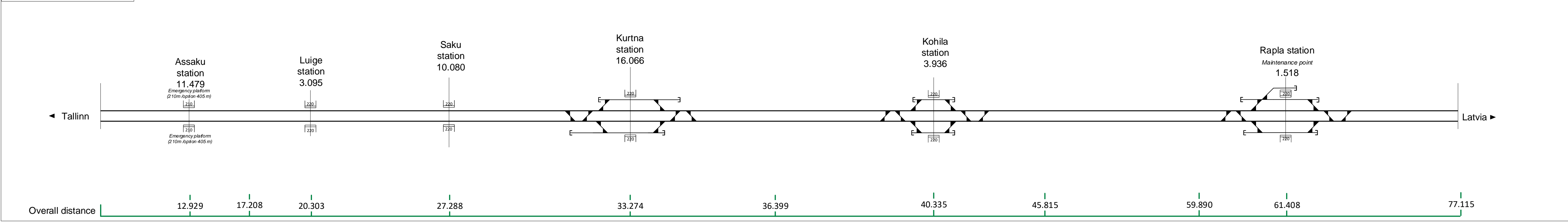
Muuga Freight Terminal



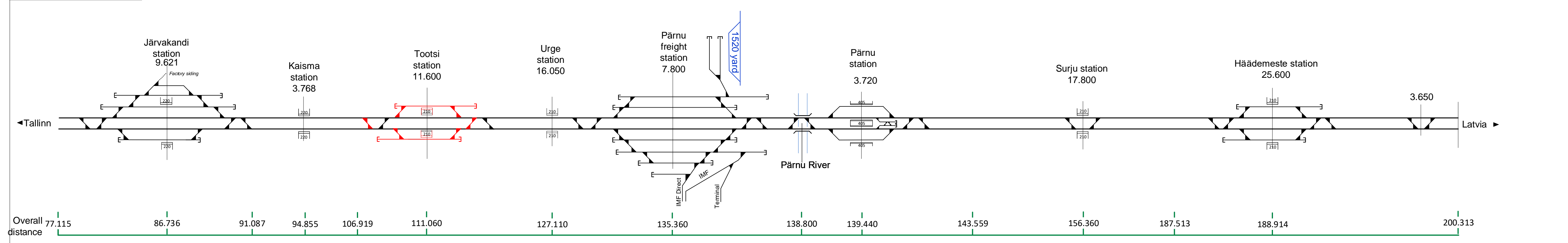
Abbreviations Legend

- RBE-Rail Baltica Estonia
- RB-Rail Baltica
- EDZL-Eiropas dzelzceļa līnijas
- DS-Design section
- LGI-Lietuvos Geležinkelų Infrastruktūra
- EE-Estonia
- LV-Latvia
- LT-Lithuania
- CR-Change Request
- ALT-Alternative
- CG-Gauge changing facility
- IMF-Infrastructure maintenance facility

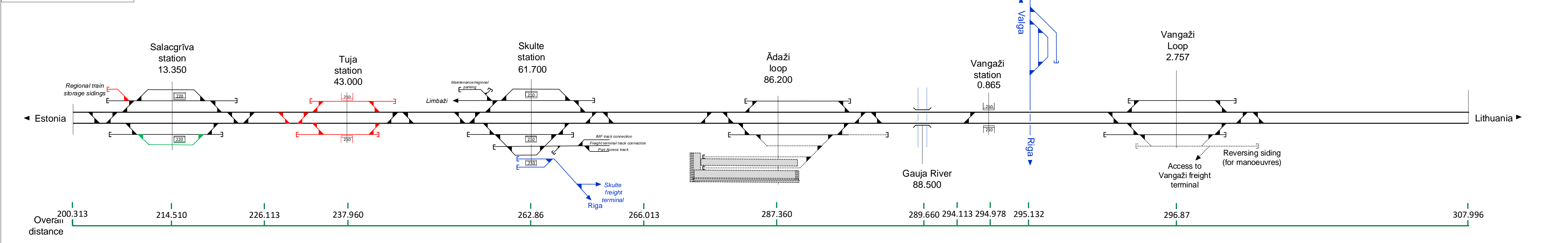
Main Track Part 2



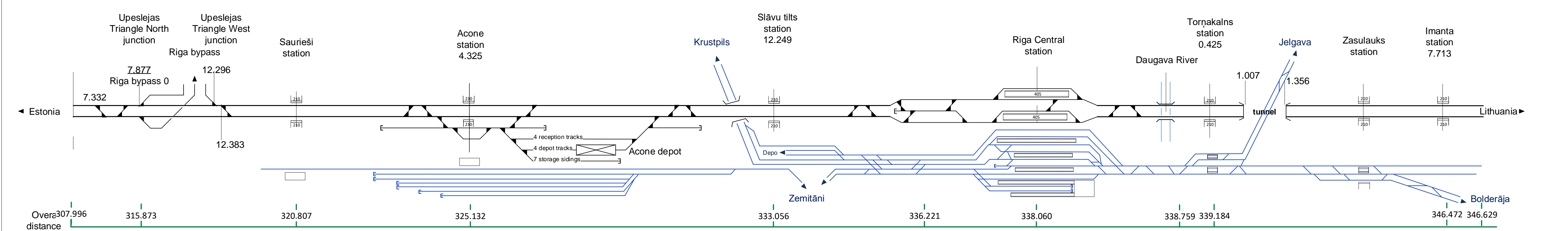
Main Track Part 3



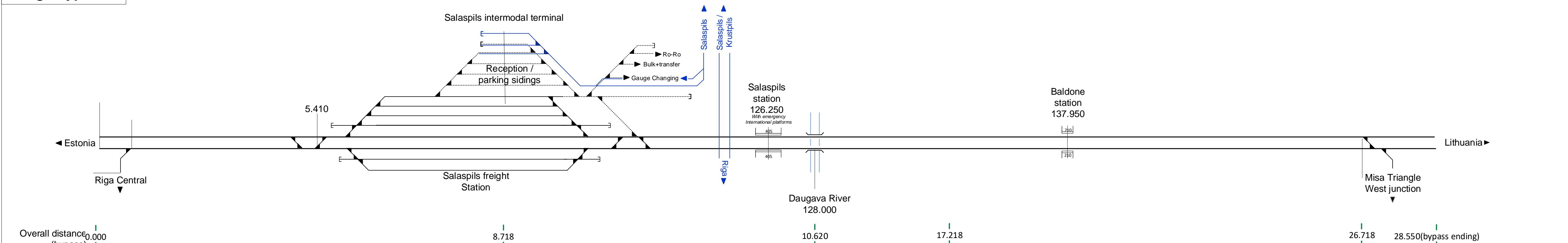
Main Track Part 4



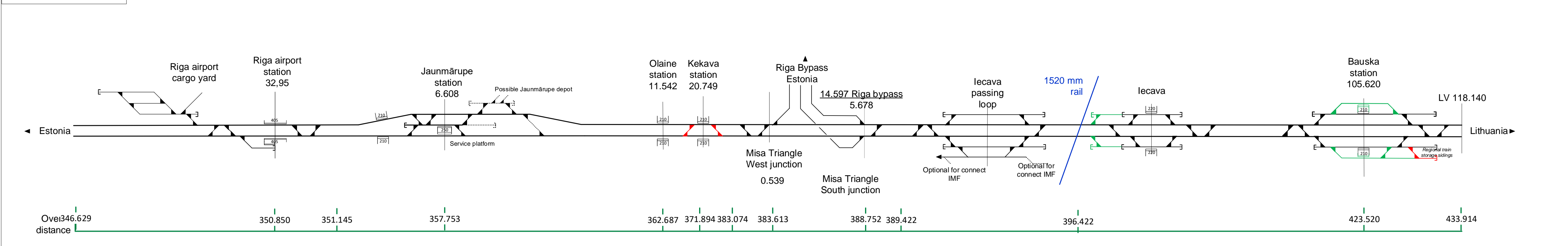
Main Track Part 5



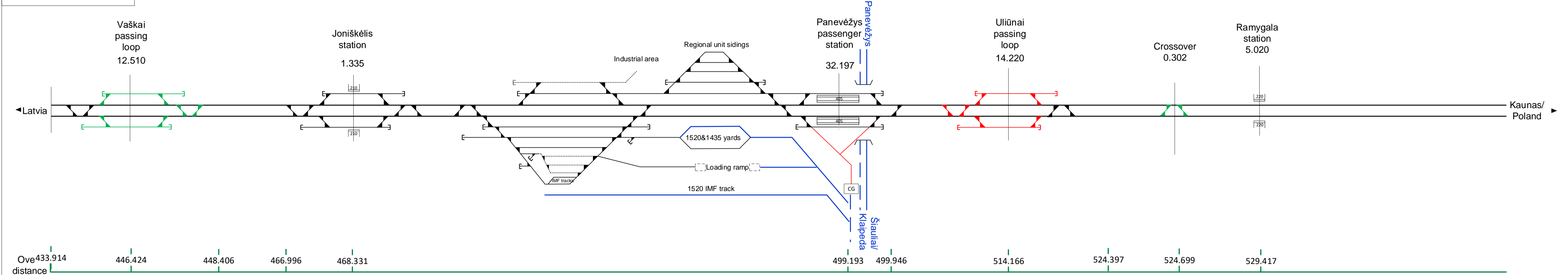
Riga Bypass



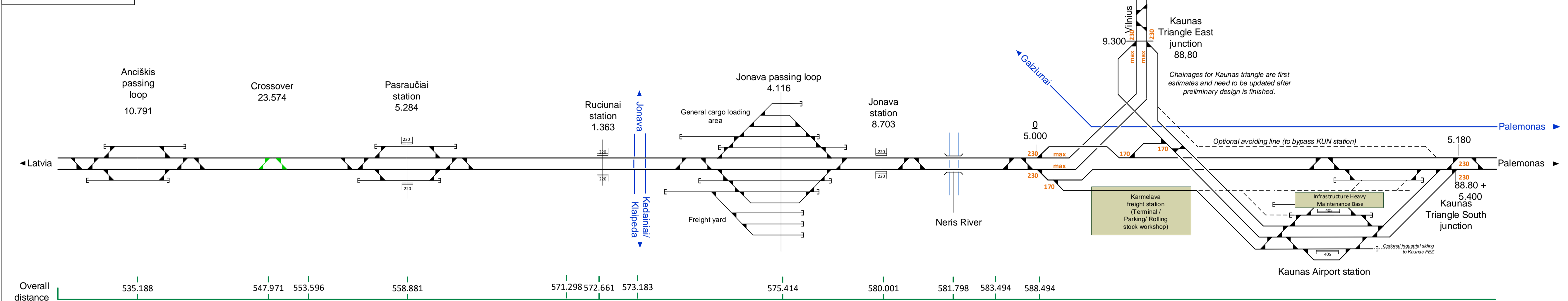
Main Track Part 6



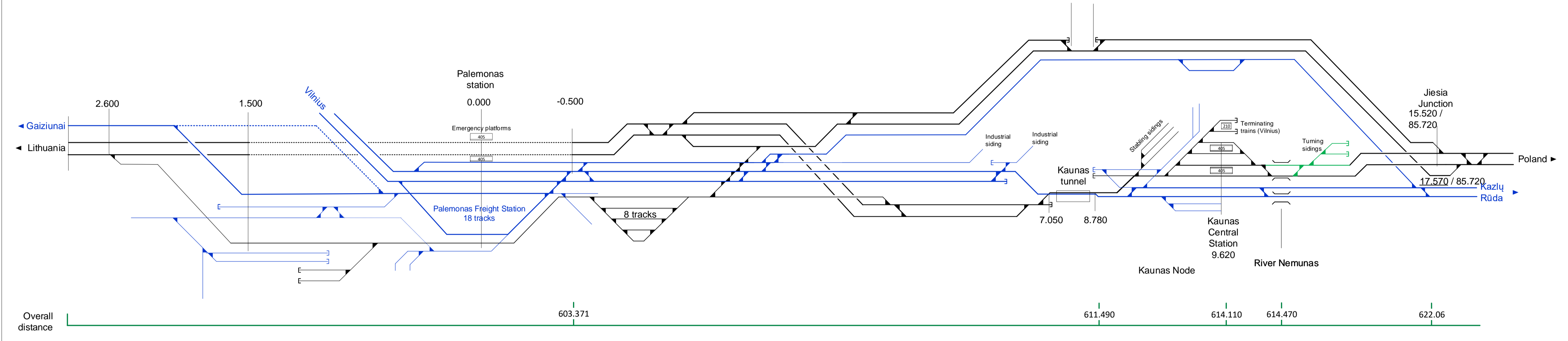
Main Track Part 7



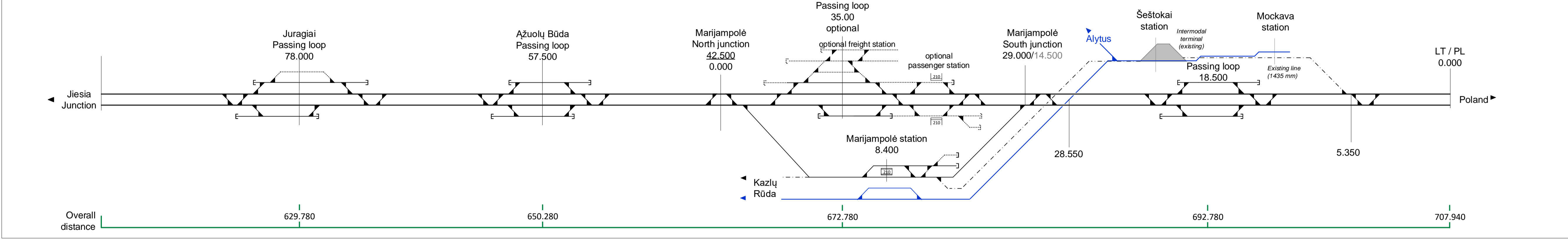
Main Track Part 8



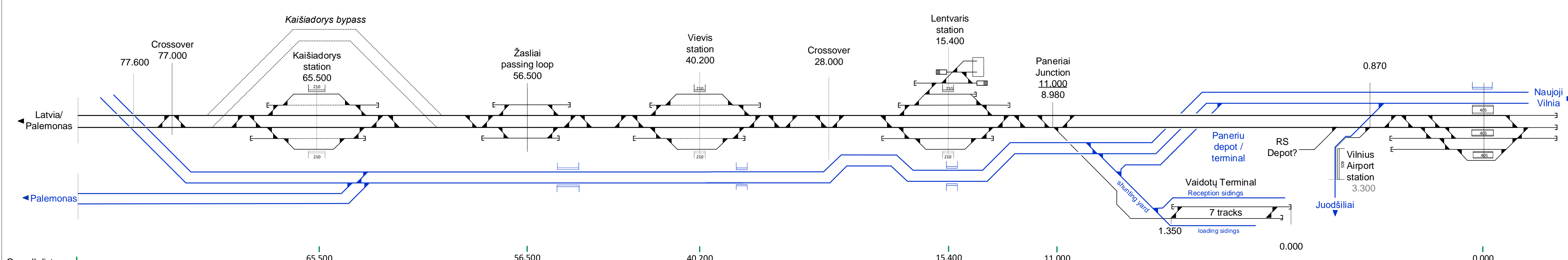
Main Track Part 9



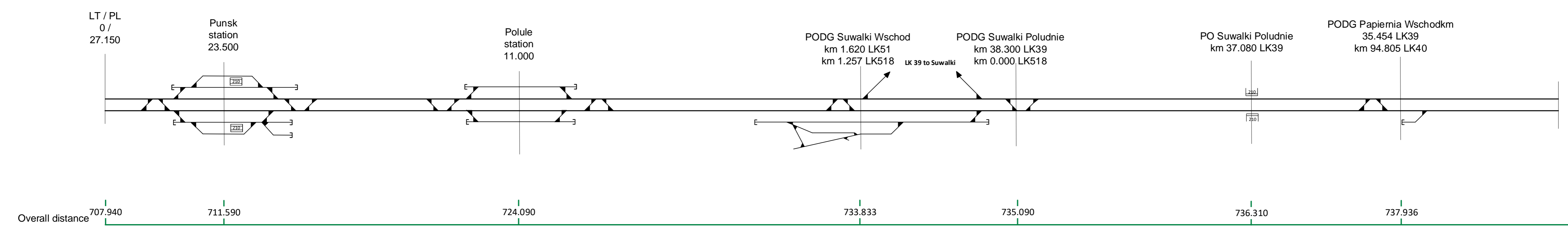
Main Track Part 10



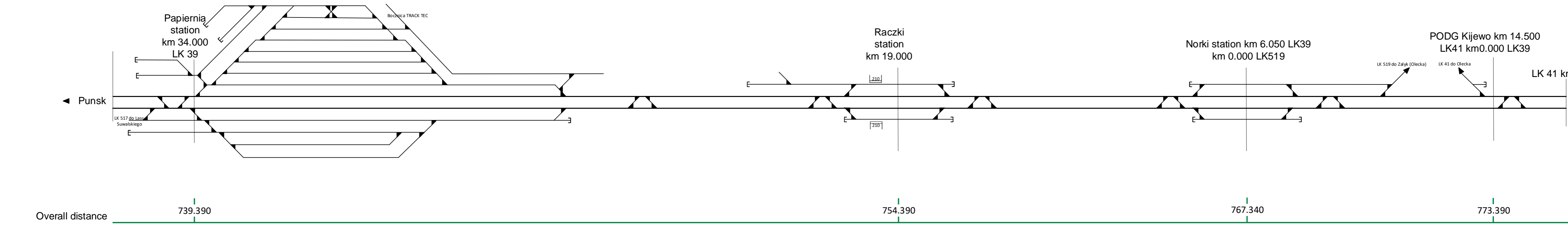
Kaunas - Vilnius



Poland (based on E75 project LT-PL border to Elk)



Poland (based on E75 project LT-PL border to Elk)



Poland (for informative purpose only)

