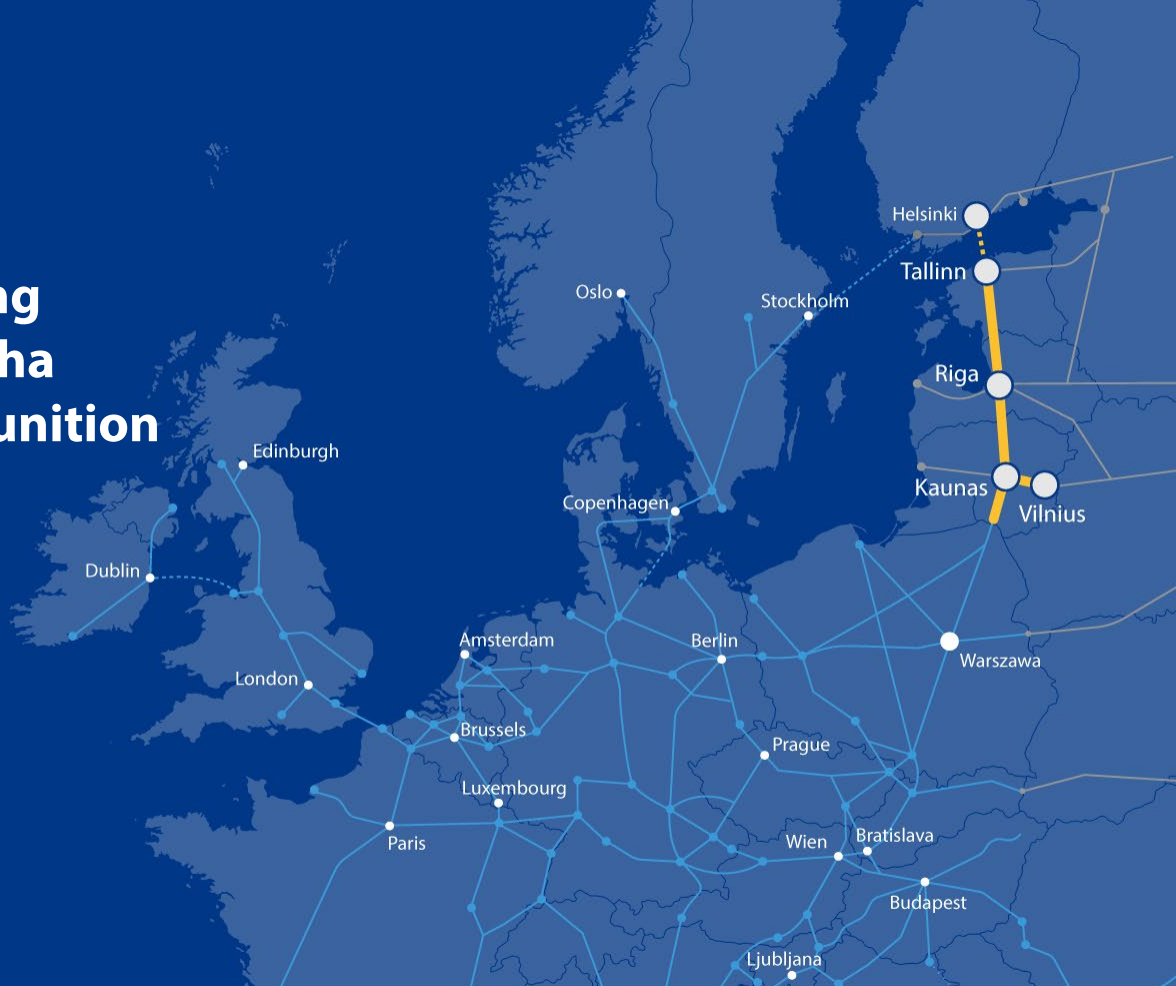




# **Supplier Meeting: Engineering services for scanning up to 4 ha large area of the potential munition buried in soil, for Rail Baltica**

**JANUARY 2021**



Co-financed by the Connecting Europe  
Facility of the European Union

# Rail Baltica

## Project Status 2020



Tallinn

Pärnu

Rīga

RIX

Panevėžys

Kaunas

Vilnius

**Design works** have started on 643 km of the main line by experienced international and Baltic engineering companies

**Spatial planning**



The key **passenger terminals** in Tallinn, Pärnu and Rīga are being designed



Separate **construction works** on road and railway infrastructure elements have started in Estonia and Lithuania



**Operational Plan** done to connect Baltic capitals every 2 hours, night trains to Berlin and Warszawa, cargo trains for business



Rail Baltica is being designed digitally by using **smart and intelligent technologies**

Learn more about current status here:  
[info.railbaltica.org](http://info.railbaltica.org)

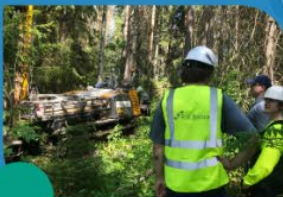
# Rail Baltica

## Project status in Latvia 2020



RIX

Riga



Design works have started.

Riga - Tallinn

1:42

Riga - Vilnius

1:54

Riga - Warsaw

5:03

Riga - Airport

0:08

- Design of the Rail Baltica terminal in the Central Station in Rīga have started.
- Supervision of construction and quality expertise is ensured for the Rail Baltica line at the Central Station in Rīga.
- Development of technical solutions for the Rail Baltica terminal and related infrastructure at Rīga International Airport completed.
- Procurement for construction of Rail Baltica terminal and related infrastructure at Rīga International Airport announced.
- Land acquisition process ongoing.

The most extensive survey in Latvian history of cultural and historical artefacts along the railway line has been completed.

According to a public opinion poll, 90% of Latvia's residents support the Rail Baltica project.

Find out more about project status here:  
[info.railbaltica.org](http://info.railbaltica.org)



# OVERVIEW OF Design Section 2: Vangaži – Salaspils - Misa

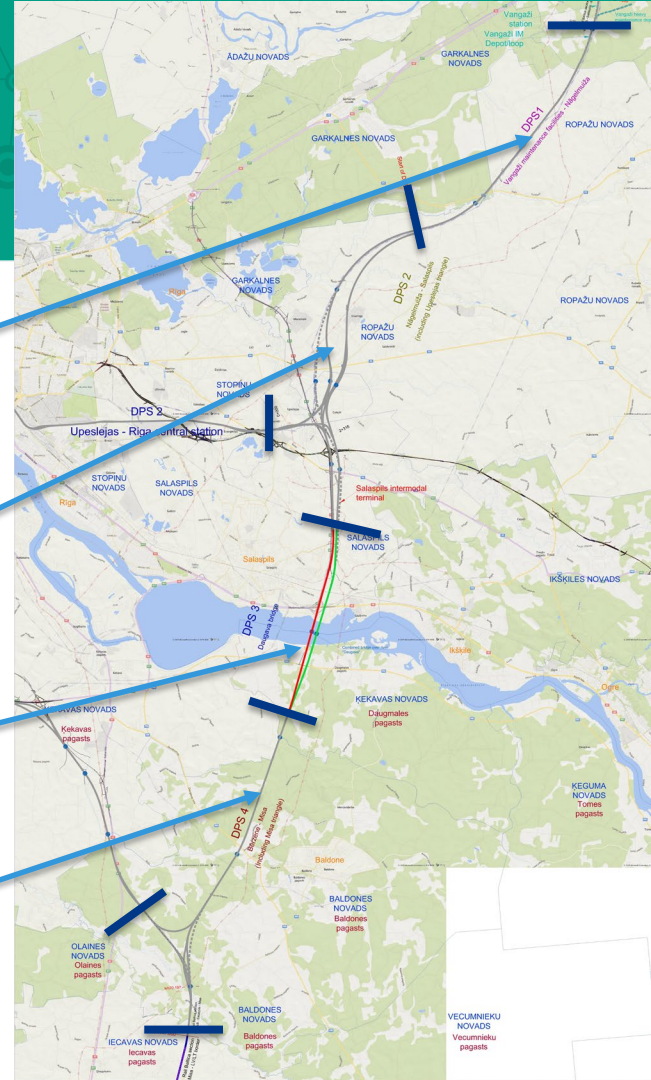


DPS 1: Vangaži maintenance facilities - Nāgelmuiža  
Length: 14 km

DPS 2 - Nāgelmuiža - Salaspils including Upeslejas triangle:  
turnout Upeslejas - RCS  
Length: 21-23 km

DPS 3 – Daugava bridge  
Length: 8,5 km

DPS 4 - Berzene – Misa including Misa triangle  
turnouts from RIX to Misa and from RIX to Upeslejas  
Length: 16 km



Area is located in Stopiņi parish, next to State road A4, approximately 20 km from Rīga.

Cekule area is contaminated with unexploded ordnance from 1920s when warehouses for Latvian National Armed Forces were located there. During WW II, the warehouses were blown up, scattering the munitions all throughout area. After this, 1-2 m of soil was backfilled on this area to make it safer. Area saw continual military use up until the USSR army left in 1994

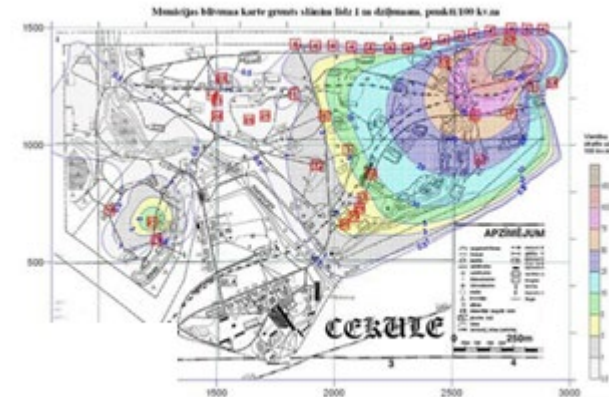


*Location of Cekule former military warehouse area*

Now the territory is covered in trees and underbrush . It is considered as forrest area, according to local planning documents. Latvian National Armed Forces area carrying out explosive ordinance disposal trainings in this area, slowly cleaning it up. These activities are carried out in West part of Cekule area.

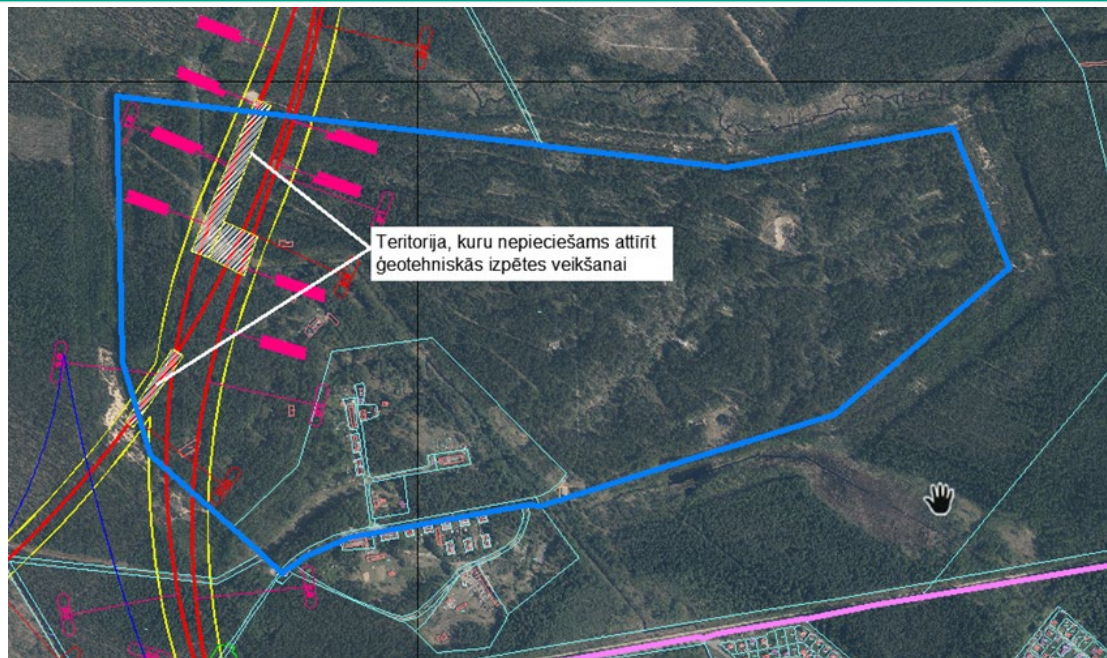
Proposed Rail baltica railway line crosses the East part of this area, where previos scanning efforts have detected approximetly 1 to 10 possible UXOs per 100 m<sup>2</sup>.

Currently the land plot is considered to be dangerous, so no investigation works, necessary for continued implementation of Rail Baltica project in this area can be carried out. This creates the necessity to locate and remove the UXOs in a limited area.



*Results of previous site survey in Cekule*





*Territory needed for detailed ground conditions investigation ~ 4 ha (including access)*

**Primary involved parties:**

- Ministry of Transport of Latvia
- Ministry of Defense of Latvia
- RB RAIL AS
- JV EDO (consultant for RB Rail AS)
- Municipality

**Secondary involved parties:**

- State forest Service
- State Environmental Service



## 1. Scan of 4 ha area\*

- a. Develop and approve the work plan with responsible authorities
- b. Produce the report of the scanned area
- c. Cleaning of the area ( organized by Ministry of Defense)


\*Activity repeated for 2nd and 3rd time if necessary and proved by the results

**OR**

## 1.2. Scan and clean the 4 ha area

- a. Develop and approve the work plan with responsible authorities
- b. Scan and clean the area
- c. Produce the report of the works completed

- 2. Proceed with geo investigations in the cleaned area
- 3. Scan and clean of all of needed area for project (future plan/strategy)




[This is the official website of the Rail Baltica Global Project](#)

[ABOUT RAIL BALTICA](#)
[NEWS](#)
[PROJECT IMPLEMENTATION](#)
[PROCUREMENT](#)
[FOR EXPORTERS](#)
[Contact Us](#)

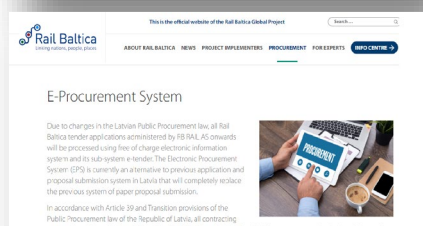
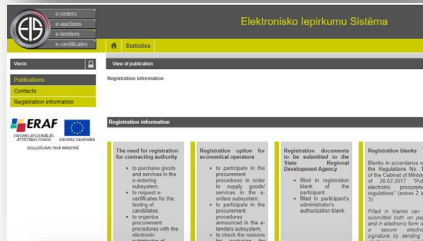
<b>RB Rail AS</b>	<b>Estonia</b>	<b>Latvia</b>	<b>Lithuania</b>
-------------------	----------------	---------------	------------------

## RB Rail AS

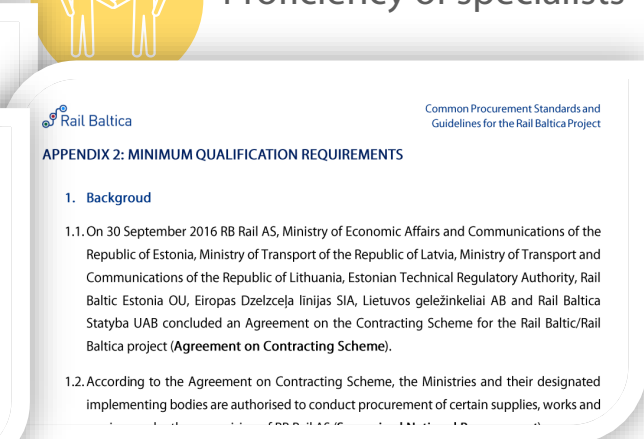
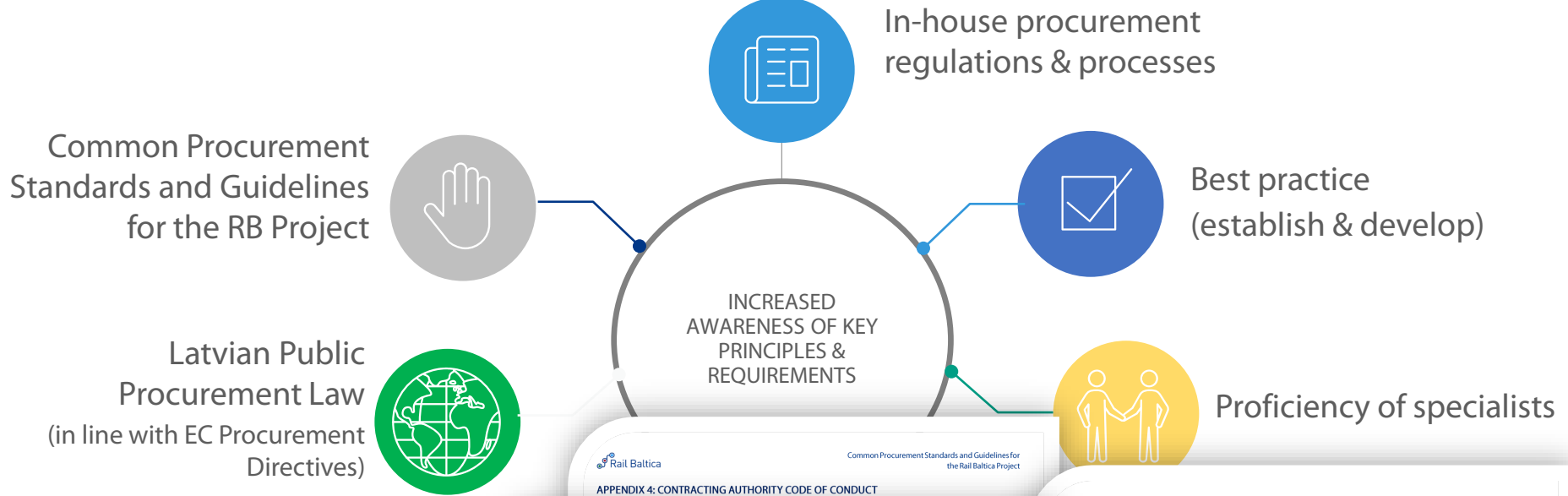
Procurement ID No.	Title	Announced	Updated	Submission Date	Language
	Supplier Meetings: Cable ducts, channels/inboxes and supporting components delivery procurement preparation for Rail Baltica	12.10.2020	12.10.2020	16.10.2020	

Submission of the Bids only in E-Tenders system:  
<https://www.eis.gov.lv/EKEIS/Supplier>  
Training: [http://paligs.eis.gov.lv/suppliers/N\\_0\\_2.html](http://paligs.eis.gov.lv/suppliers/N_0_2.html)

Information on HOW TO REGISTER :  
<https://www.railbaltica.org/procurement/e-procurement-system/>  
 and  
<https://www.eis.gov.lv/EIS/> (click on the Tab “Registration”)



# RB Rail AS Procurement Governance



- The experience of the company
- Technical possibilities, accuracy (magnetic scanning)
- Cost
- Time frame
- Other questions





**THANK YOU**