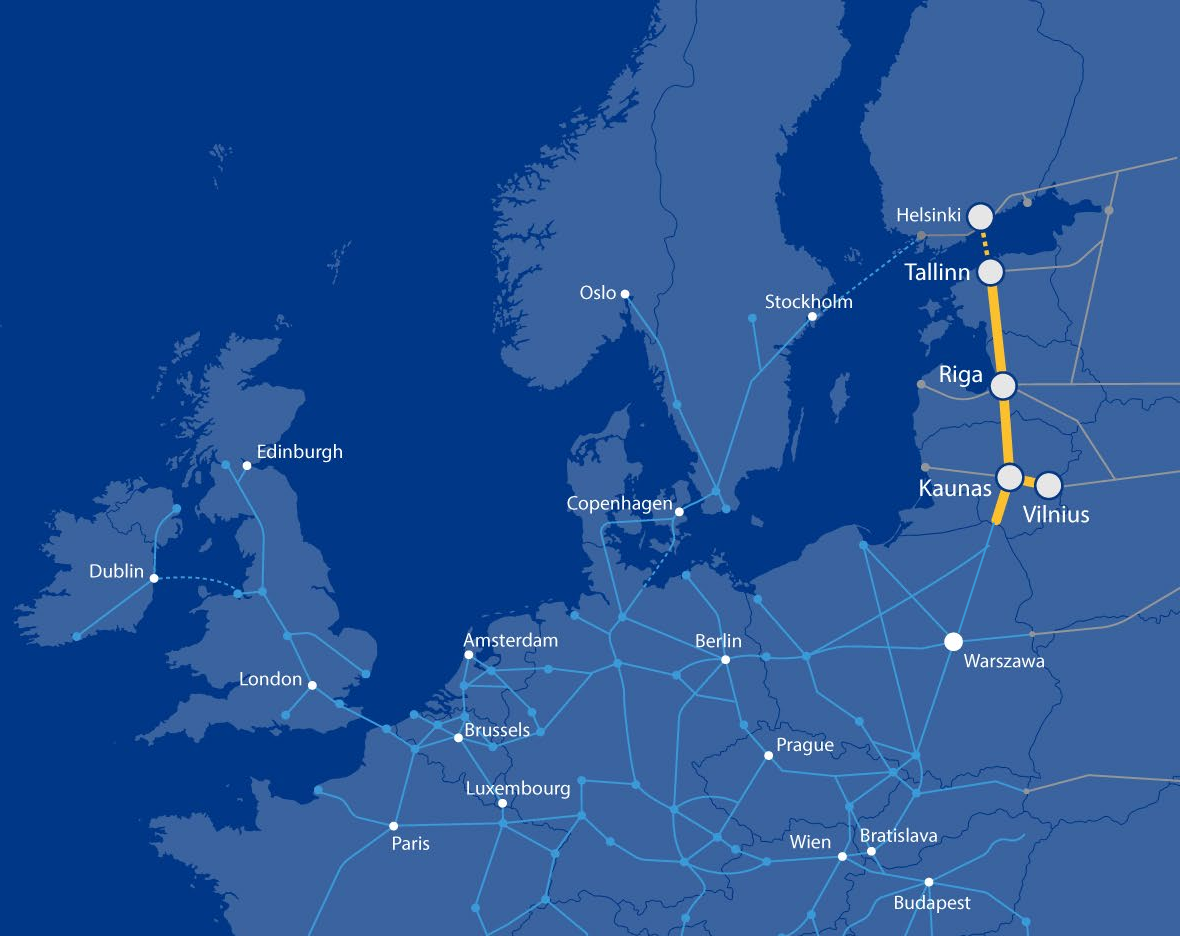


Progress made





- **Design works** and **site investigations** have already started on 411 km of the Rail Baltica line
- **6 design contracts** in total signed
- DTD services provided by IDOM, INECO, Egis, DB Engineering, Olymps
- 3 inception reports delivered
- **Steering committees** established in each country including BENs and IBs
- 3 ongoing procurements - 2 sections in Latvia and 1 in Estonia
- **9 out of 11 designs** to begin in 2020, constituting 75% of the main line
- No claims regarding procurement

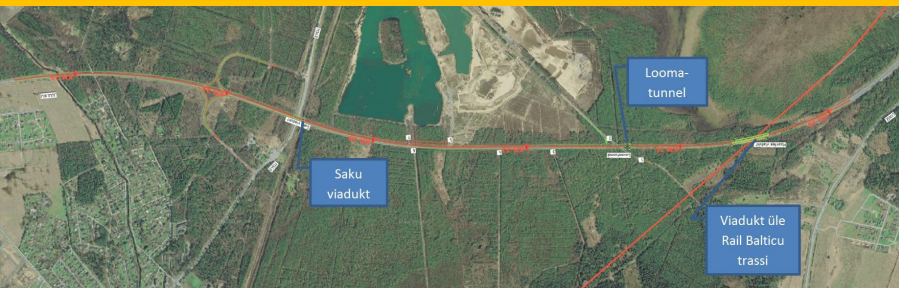


Estonia

- Architectural design competition for the Rail Baltica Ülemiste Terminal ongoing

Latvia

- Riga Central Station design and build contract signed and design works started in August
- Master design progressing for Rail Baltica station in the Riga International Airport
- Preparation of the procurement for Rail Baltica Station at RIX started
- Environmental impact assessment study started for Salaspils Multimodal Freight Terminal



Estonia

The highway bypass over Rail Baltic route on the Tallinn Ring Road, Saustinõmme bridge, is due to begin in September. Implemented by AS YIT Infra Esti.

Lithuania

Construction works of single track from Kaunas to Palemonas ongoing, implemented by LG. Assessment of compliance with Design Gguidelines ongoing. Rokai to Palemonas: procurement for construction works for construction of single track railway ongoing. Procurement for preparation of Spatial Plan and EIA to develop double track railway ongoing.



- Rail Baltica **BIM Strategy** developed
- Procurement of the software supply, implementation and maintenance for Rail Baltica **BIM system** completed
- Contract awarded to **Bentley Systems International**



- **ERTMS deployment strategy** procurement ongoing
- **Electrification supply and deployment strategy study** in the final stage
- **Supplier market study** at the final stage
- **Infrastructure maintenance facilities study** at the final stage
- **Infrastructure management model legal study** provided for a review to BENs



Architectural, Landscaping and Visual Identity Design Guidelines for Rail Baltica Railway finalized:

- Regional stations/stops
- Certain elements of International stations
- Signage and wayfinding
- Railway bridge
- Road bridge
- Embankments and cuts
- Noise barriers
- Animal passages

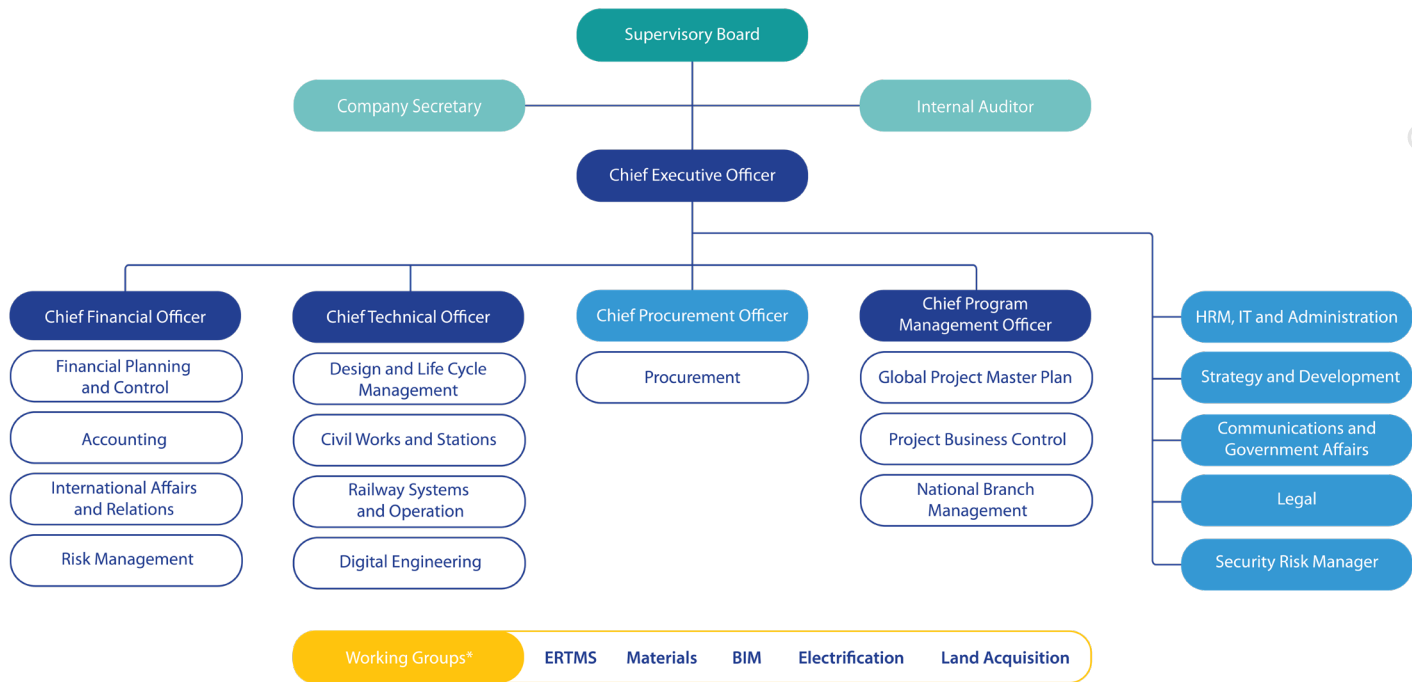


Estonia and Lithuania

Land acquisition in progress, no major obstacles reported.

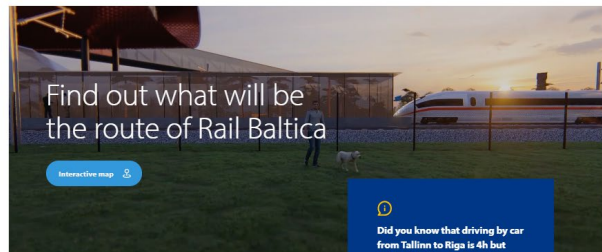
Latvia

The first 123 properties to be acquired for Rail Baltica in the Central Station in RIX. Public information campaign launched to facilitate the process.





- Meetings with **municipalities** in all three states regarding detailed technical design.
- Meeting with the delegation of the **Logistics Alliance Germany** led by Steffen Bilger, Parliamentary State Secretary to the Federal Minister of Transport and Digital Infrastructure
- Meeting with the **French Minister of State for European Affairs**



Did you know that driving by car from Tallinn to Riga is 4h but with Rail Baltica it will only take 1h 42 min?
See more benefits →

In brief



The total length of line is 870 km



The estimated cost of the project is 5,8 billion €



Rail Baltica will create approximately 36 000 jobs

See all facts

News



123 properties will undergo land acquisition by the time Rail Baltica starts construction work

The land acquisition process for Rail Baltica construction in Latvia has been ongoing for a couple of years and the national implementing body of Rail Baltica in Latvia - Eiropas Darbzoģības Nītijs has prepared 123 private and government properties for land.

Read more →

21.08.2019

- Interactive map of the Rail Baltica track developed with explanations about status in each section
- Info provided in 4 languages
- Digital and social media campaign conducted
- Almost 4 million people reached in the Baltic States

Check out the
project status here:
railbaltica.org

