



Rail Baltica:

The Future of European Flagship Infrastructure Project Financing

IGNAS DEGUTIS

CFO

Member of the Management Board

RB RAIL AS

3 April 2019 | Vilnius | Rail Baltica Forum



Co-financed by the European Union
Connecting Europe Facility

Trans-European Transport Network

by 2030



Game changer for intra-Baltic passenger travel

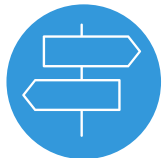


Design speed:
249 km/h for passenger trains
120 km/h for freight trains

- 7 railway passenger stations with potential regional stations
- 3 multimodal terminals
- Connections to airports and sea ports

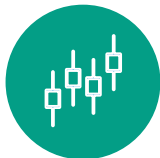


Rail Baltica Technical Parameters approved



Total length of line is 870 km

- 213 km in Estonia
- 265 km in Latvia
- 391 km in Lithuania

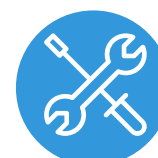


Standard gauge:

- 1435 mm
- Double track
- Electrified



Traffic management:
ERTMS Level 2



2x25kV AC



Axle load 25t



Design speed:

- 249 km/h for passenger trains
- 120 km/h for freight trains



Maximum length
of freight trains:
1050m

Detailed Technical Design in Estonia

Sections:

1. Pärnu to Rapla
2. Tallinn to Rapla
3. Pärnu to Estonian/Latvian border

Indicative scope of works:



15 bridges



24 railway viaducts



40 road viaducts



24 ecoducts



Detailed Technical Design in Latvia

Sections:

1. Riga Central Section
2. Vangaži to Misa

Indicative scope of works:



15 bridges



32 railway viaducts



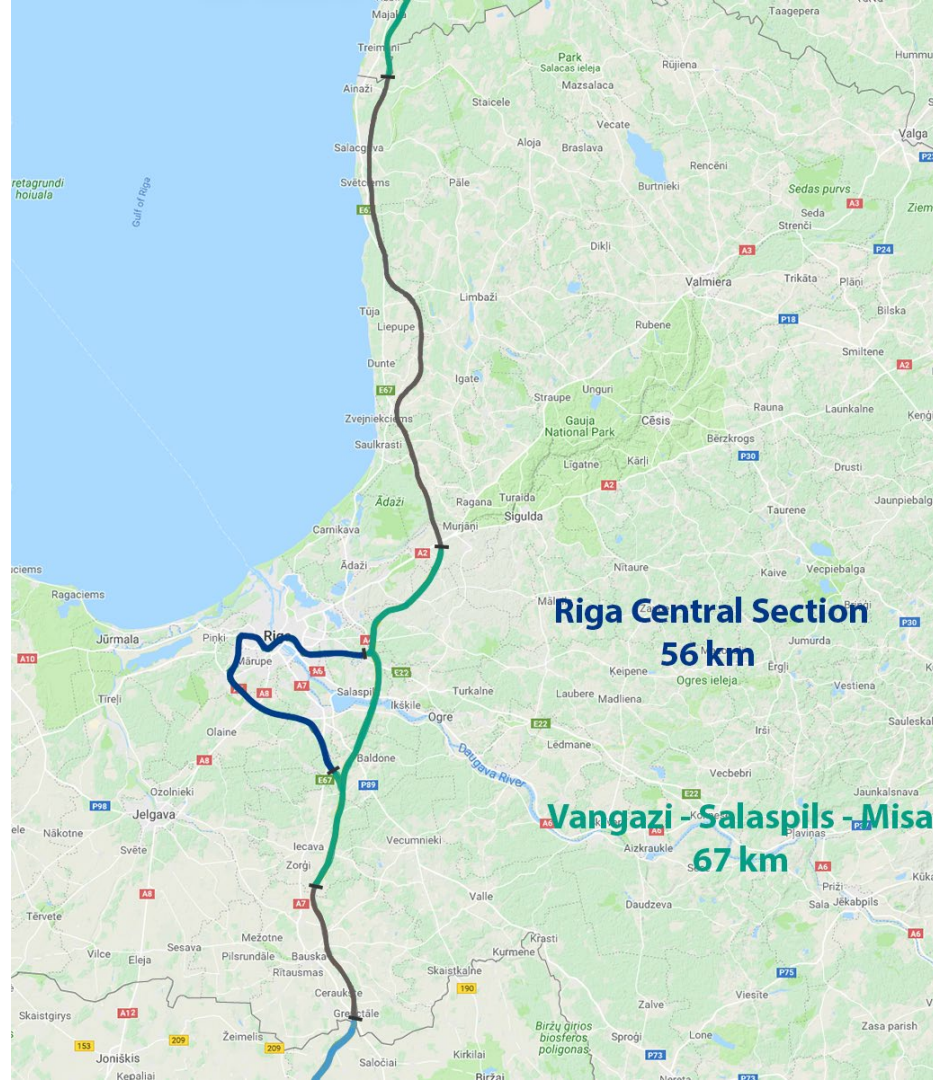
31 road viaducts



7 ecoducts



13 segregated pedestrian crossings



Detailed Technical Design in Lithuania

Sections:

1. Kaunas to Ramygala
2. Ramygala to Lithuanian/ Latvian state border

Indicative scope of works:



7 bridges



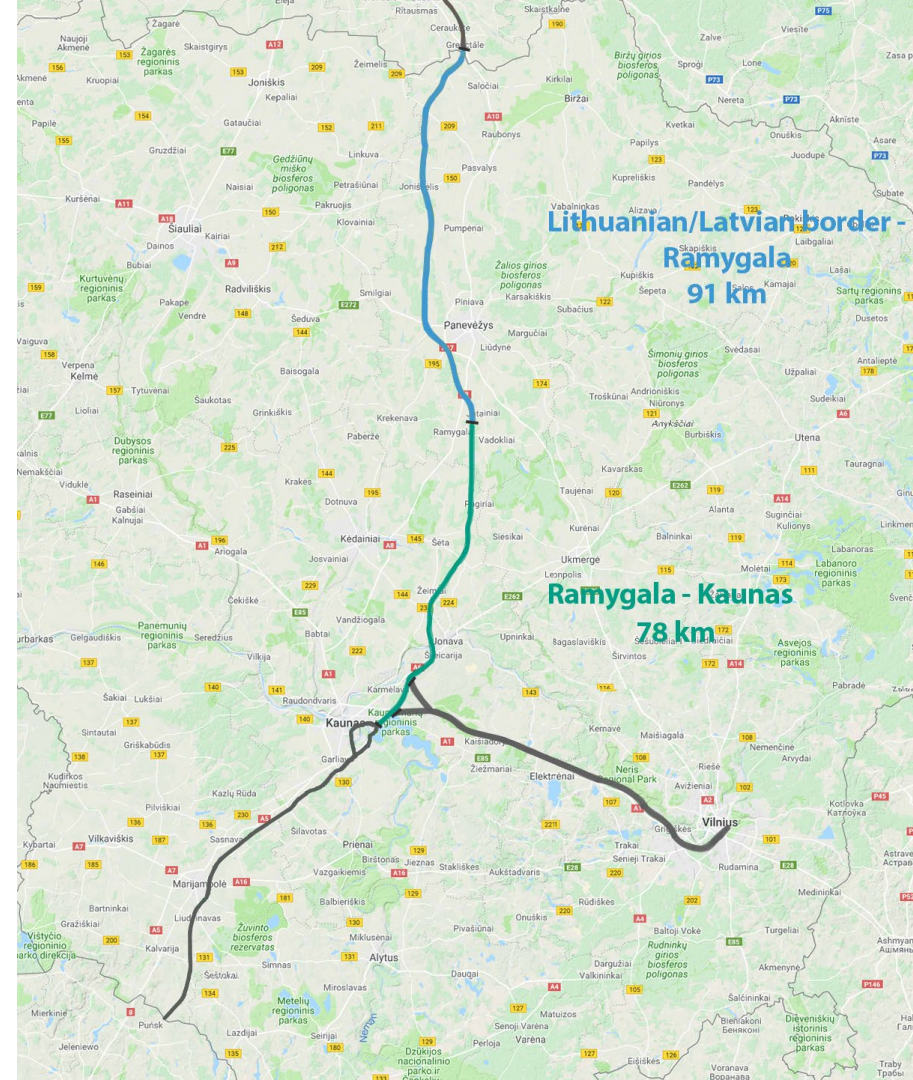
31 railway viaducts



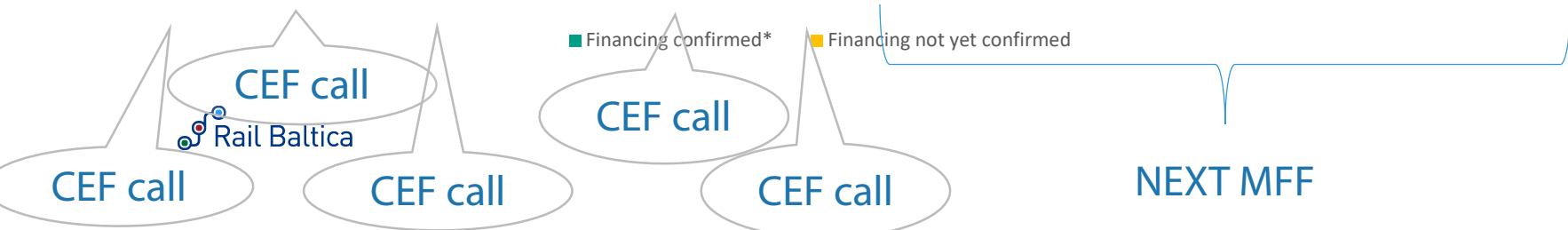
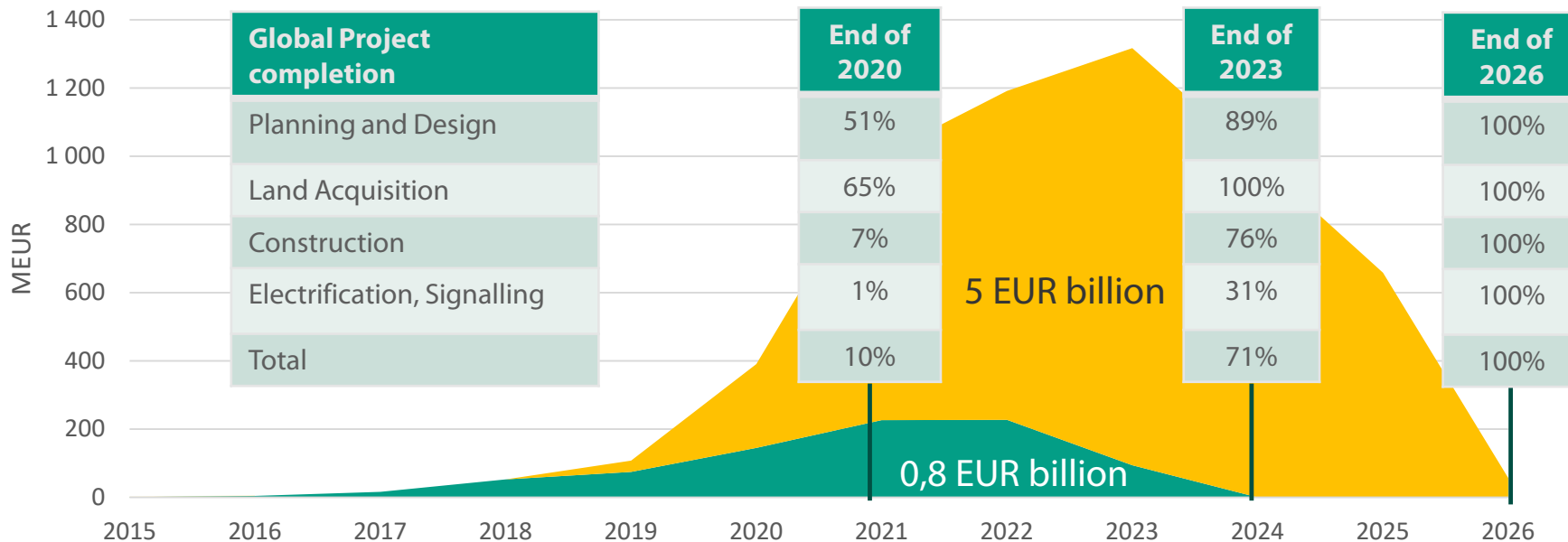
21 road viaducts



7 ecoducts



Global Project Financing Status – CAPEX 5.8 bn EUR: forecast based on assumption of having funding available when necessary





EU funding instrument

⦿Transport

⦿Growth

⦿Energy

⦿Jobs

⦿Telecom

⦿Competitiveness

INNOVATION AND NETWORKS EXECUTIVE AGENCY

INEA

NEXT MFF 2021-2027



EUROPEAN UNION
STRUCTURAL FUNDS

11.3 billion EUR



Current prices



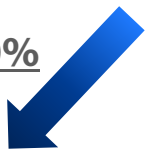
Connecting Europe Facility 2021-2027 (figures in current prices – EUR)	
Transport:	30,615,493,000
<i>Including:</i>	
General envelope	12,830,000,000
Contribution from the Cohesion Fund:	11,285,493,000
Support for military mobility:	6,500,000,000

Competitive envelope

European Commission proposal

11.3bn EUR CEF transport
from Cohesion fund:

70%



30%



National Envelopes

2021-2023

Competitive envelope

2021-2023

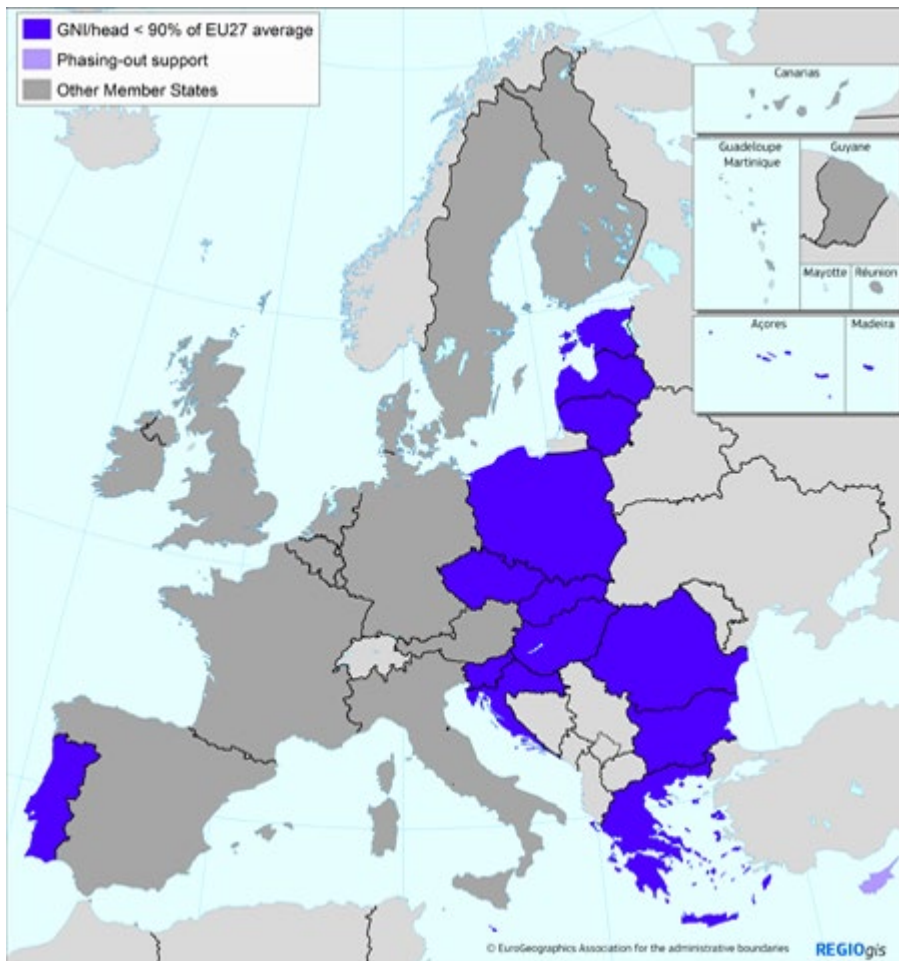
01.01.2024. uncommitted funds



100%

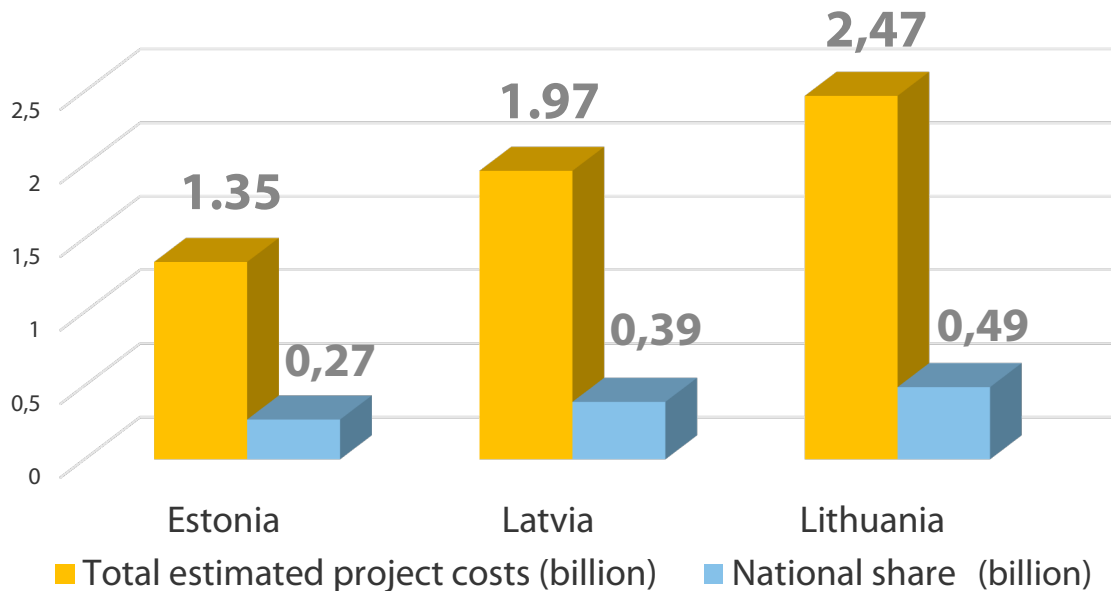
Competitive envelope

2024-2027



Source: https://ec.europa.eu/regional_policy/en/policy/how/is-my-region-covered/

Financing per state



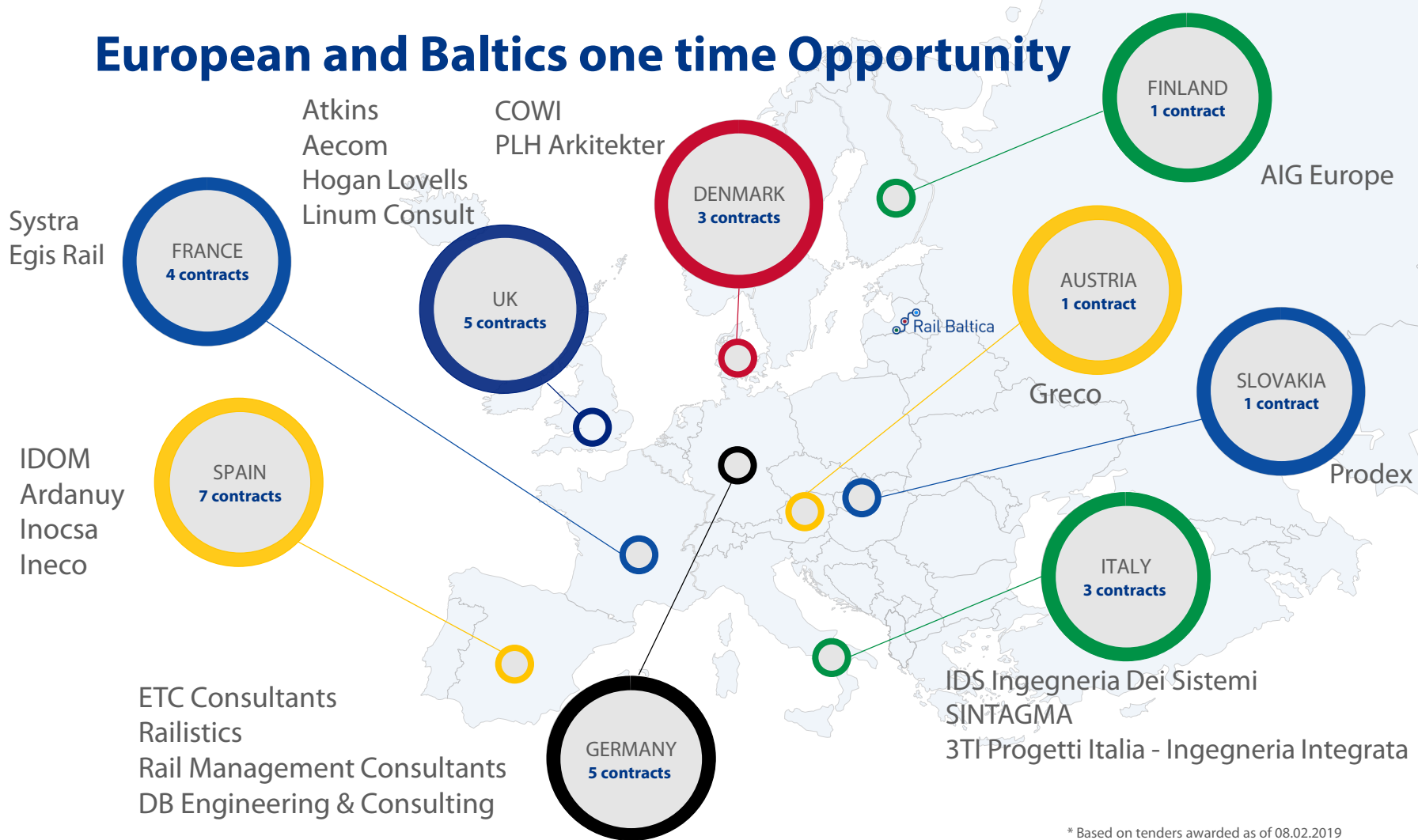
National share

0.2-0.3 %

Of annual state budget
expenditure per state /
on average per year

16 EUR /per year/per
citizen

European and Baltics one time Opportunity



* Based on tenders awarded as of 08.02.2019

EU Multiannual Financial Framework 2021-2027 negotiations



European Council

