



 Rail Baltica  
Implemented by

 EIROPAS  
DZELZCEĻA  
LĪNIJAS

# Rail Baltica implementation progress in Latvia, 2018

Tallinn 23 January, 2019





# Design of Rail Baltica Riga urban area RIX connection

## 1st Rail Baltica design contract

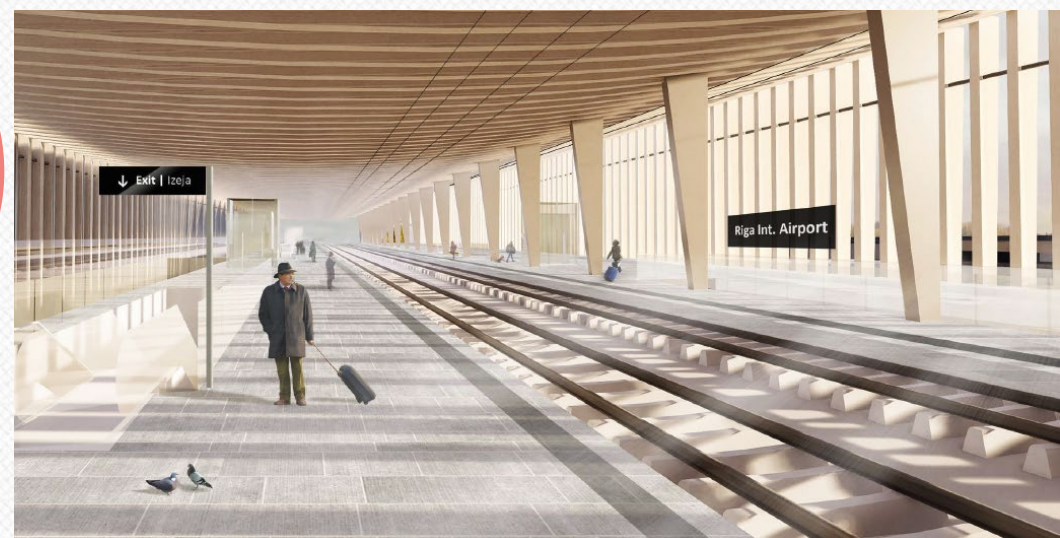
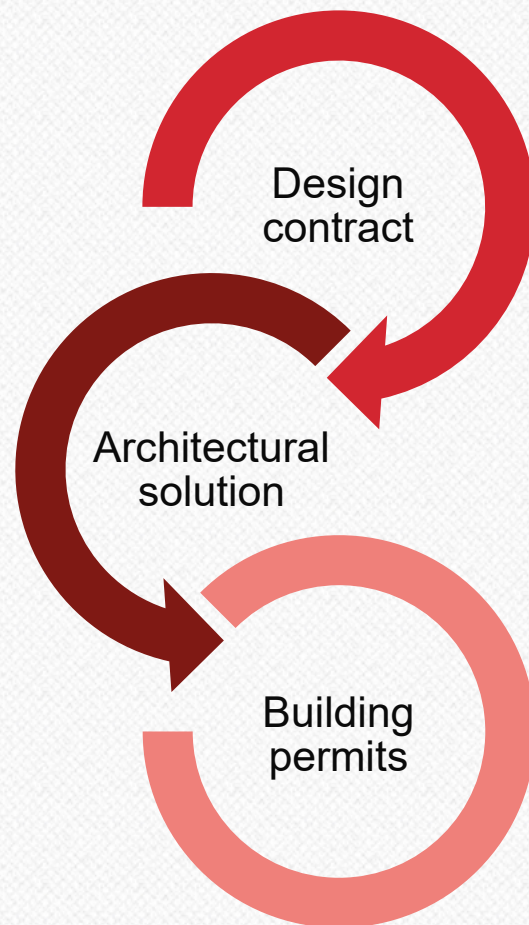
- Signed on 20 March, 2018 between EDZL and winner of open international tender – „PROSIV” („Sintagma” (Italy), „Prodex” (Slovakia) and „Vektors T” (Latvia)).
- Total length of the railway line to be designed is 4.4 km. RB railway station at Riga Airport shall be located on a viaduct (stretching across all the airport territory for 2 km) on the same level with the perspective terminal's check-in hall.

## Visual concept approved

- Architectural solutions discussed with NGOs and concept approved by EDZL and Riga Airport.

## Building permits

- Building concept in minimum composition submitted to the Railway Technical Authority in December.
- First building permits received on 18/01/2019.

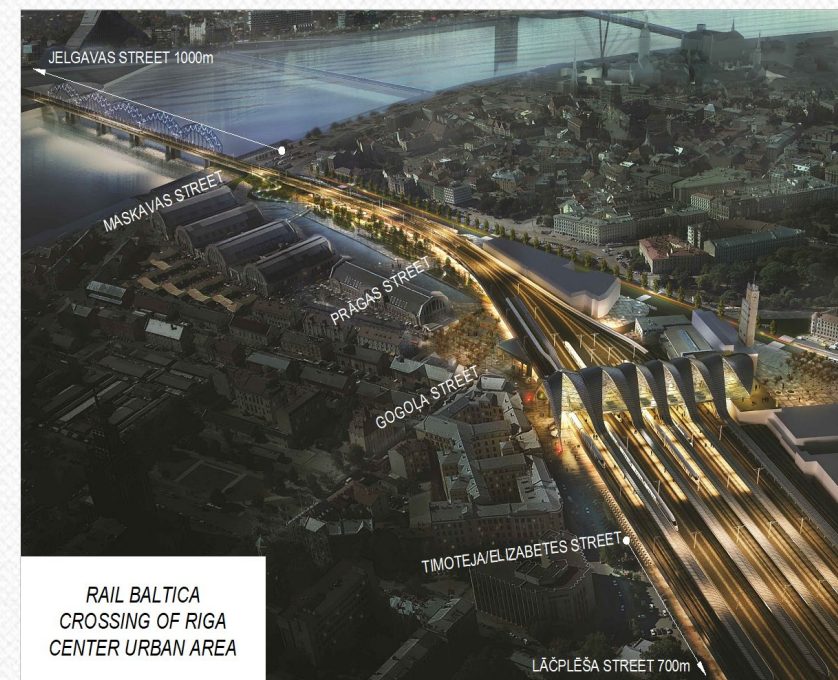
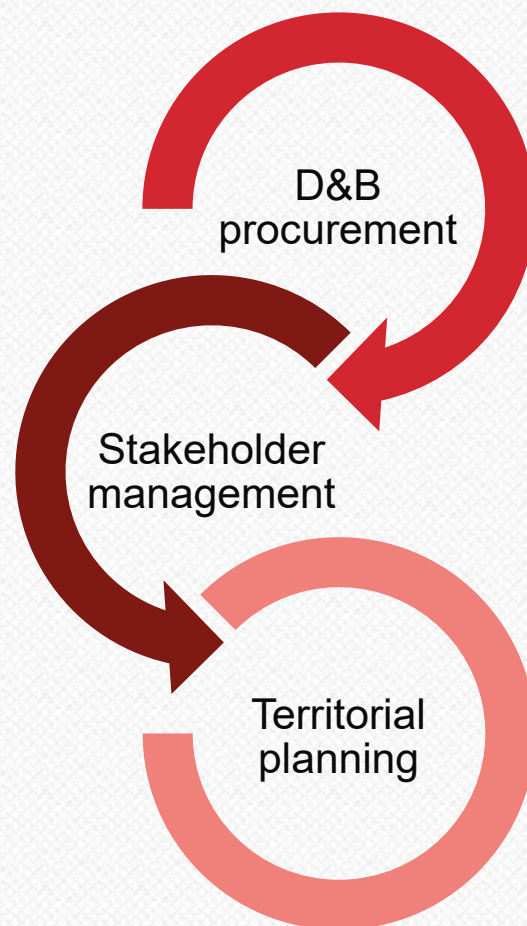


# Riga urban area crossing of Central station and river Daugava

Phase 2 announced  
21/08/2018  
Offers received  
03/12/2018

Active stakeholder  
management – MoU  
signed with 4 NGOs

Rail Baltica needs  
accommodated  
within the Riga City  
territorial planning





# Cultural heritage research finalized in Latvia

Rail Baltica length in  
Latvia multiplied by 3  
= 795km walked

126 potential cultural heritage  
locations, objects and findings  
identified and analyzed



16 archeologists  
5 architects  
3 geodesy engineers  
6 historians

5653 sample drillings  
3D scanning of 6 major structures  
underwater investigations in 5 rivers  
more than 2300 orthophotos



EIROPAS  
DZELZCEĻA  
LĪNIJAS

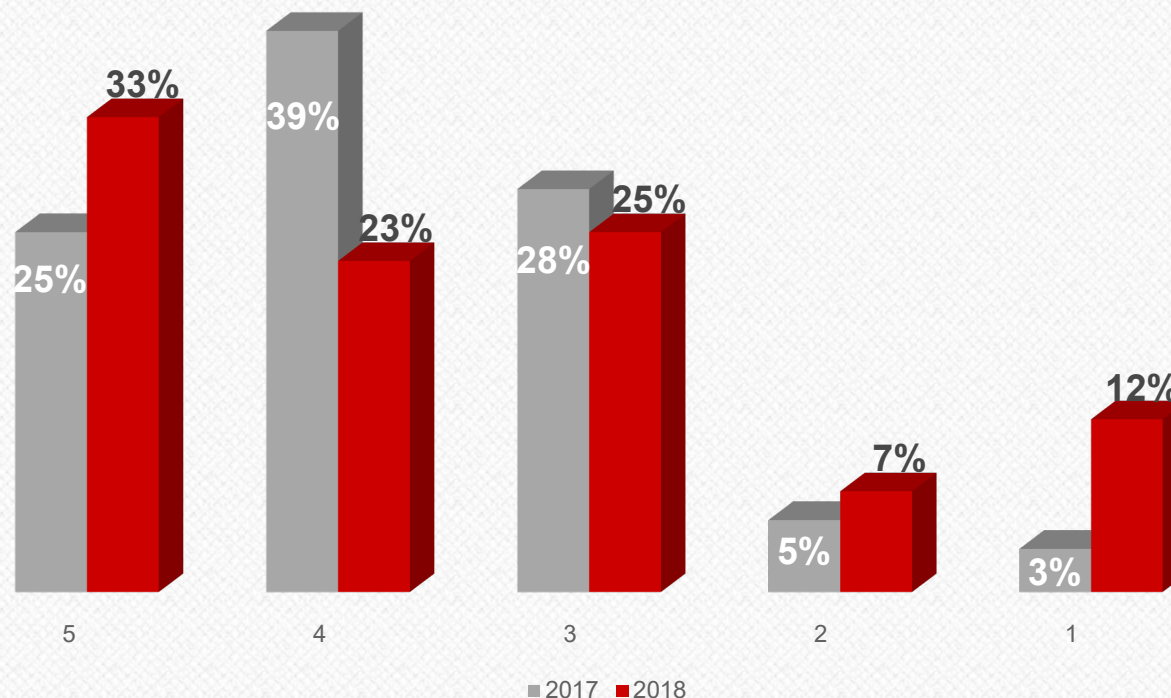
**Cultural heritage values identified**

**Please VIDEO!**

# Support to the construction of «Rail Baltica» grows in 2018

- Comparing to 2017 strong support has grown by 8%
- 74% respondents are informed about the project development
- Awareness of Rail Baltica benefits also grows (RB = modern infrastructure)
- Awareness of individual benefits – faster travel times and connectivity

## Quantitative online survey



In a scale from 1 to 5, where 5 means *I strongly support it* but 1 means *I do not support it at all*.

## 2019 milestones





# CONTACT INFORMATION



✉ Maskavas iela 12, Rīga  
LV1050, Latvija

✉ [edzl@edzl.lv](mailto:edzl@edzl.lv)

📞 +371-66954242

## THANK YOU FOR ATTENTION!



Co-financed by the European Union  
Connecting Europe Facility