

# Feasibility studies and design tenders of local facilities

**Anvar Salomets**  
Rail Baltic Estonia

# Rail Baltic Estonia projects

- ▶ Ülemiste passenger terminal
- ▶ Pärnu passenger terminal
- ▶ Muuga freight terminal
- ▶ Pärnu freight terminal
- ▶ Dry port on the Rail Baltica route near Tallinn area
- +
- ▶ Horizontal studies



Rail width  
1435mm



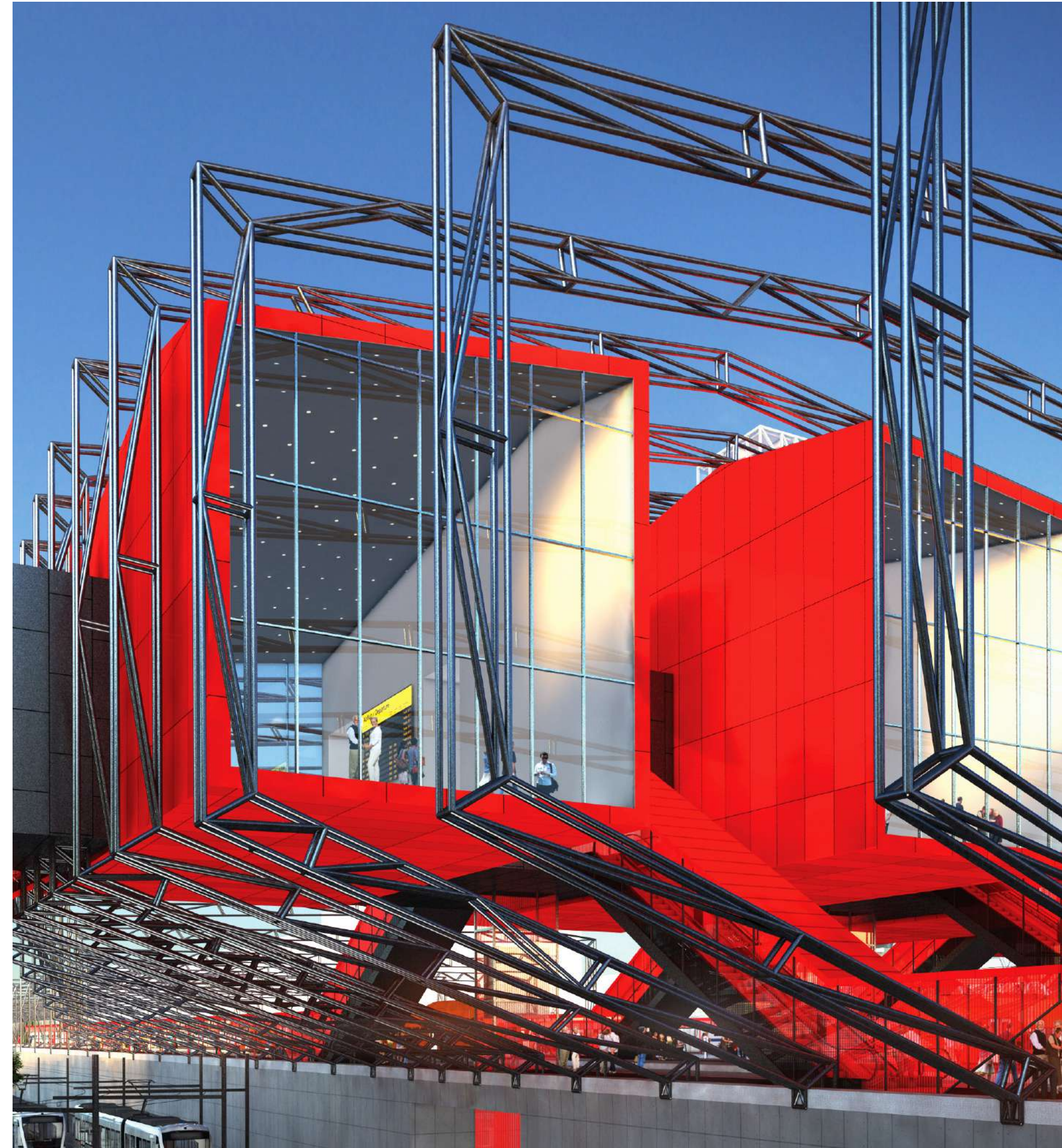
# Ülemiste passenger terminal

## Status quo

- ▶ detailed planning is on-going, to be concluded by the end of 2018
- ▶ analysis of terminal functionalities – interim report provided
- ▶ other preparation activities – agreements with stakeholders etc

## Future tenders and timeline:

- ▶ detailed design of 1520 mm railway yard – 2018
- ▶ detailed design of terminal building – 2018–2019





# Pärnu passenger terminal

## Status quo

- ▶ detailed planning process is finished – established by the local government
- ▶ ToR for the analysis of terminal functionalities is under preparation

## Future tenders and timeline:

- ▶ analysis of terminal functionalities – II quarter 2018
- ▶ detailed design of terminal building – IV quarter 2018





# Muuga freight terminal

## Status quo

- ▶ preliminary feasibility study and CBA provided
- ▶ analysis of possible legal restrictions while implementing technical alternatives is on-going
- ▶ pre-agreements with Estonian Railways and Port of Tallinn regarding possible technical solutions
- ▶ ToR for the analysis of different financing scenarios is under preparation

## Future tenders and timeline:

- ▶ analysis of different financing scenarios – III quarter 2018
- ▶ detailed planning of freight terminal – IV quarter 2018
- ▶ preliminary design of freight terminal – at the beginning of 2019





# Pärnu freight terminal

## Status quo

- ▶ Preliminary feasibility study and CBA will be concluded by RB Rail AS by the end of 2018

## Future tenders and timeline:

- ▶ detailed planning of freight terminal – at the beginning of 2019
- ▶ preliminary design of freight terminal – at the beginning of 2019





# Dry port

## Background:

- ▶ based on the Muuga freight terminal feasibility study additional resources are needed after 2030 for cargo handling
- ▶ ToR for the dry port feasibility study is under preparation

## Future tenders and timeline:

- ▶ feasibility study for the dry port near Tallinn area on the Rail Baltica route – III quarter 2018
- ▶ preliminary design – to be specified





# Horizontal studies

## Availability of mineral resources –

- ▶ 2 studies carried out so far – availability of mineral resources in certain areas around Rail Baltica route needs to be specified (limestone, sand)
- ▶ follow-up studies – how to ensure necessary resources (opening of new quarries, widening scope and logistics, alternative resources)

## Development of implementation model for construction and construction logistics

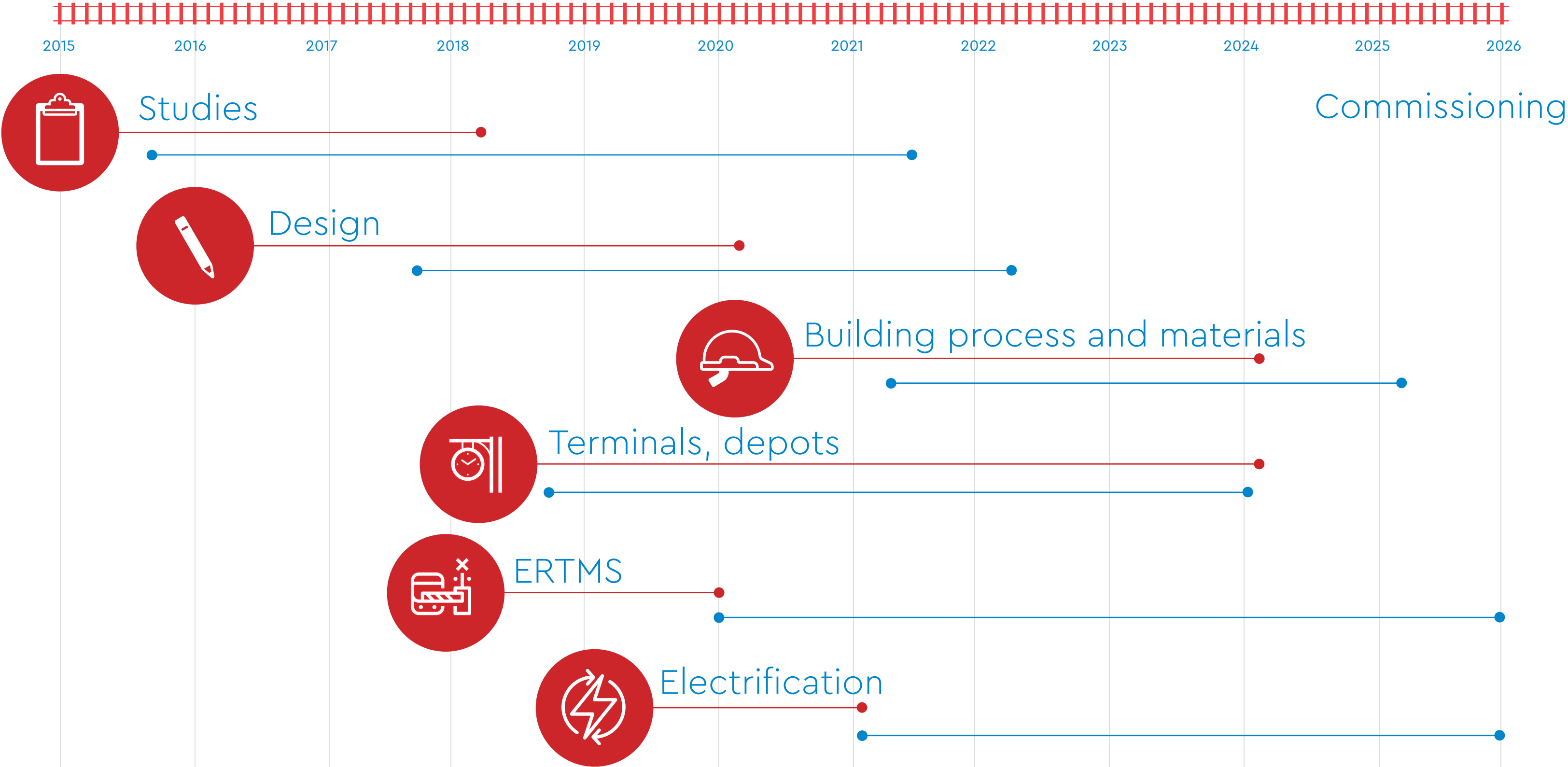
- ▶ main outcomes – procurement strategy alternatives, construction logistics plans for different alternatives





# Rail Baltica Global Project timeline

Tenders phase  
Implementation phase





# Thank you!

